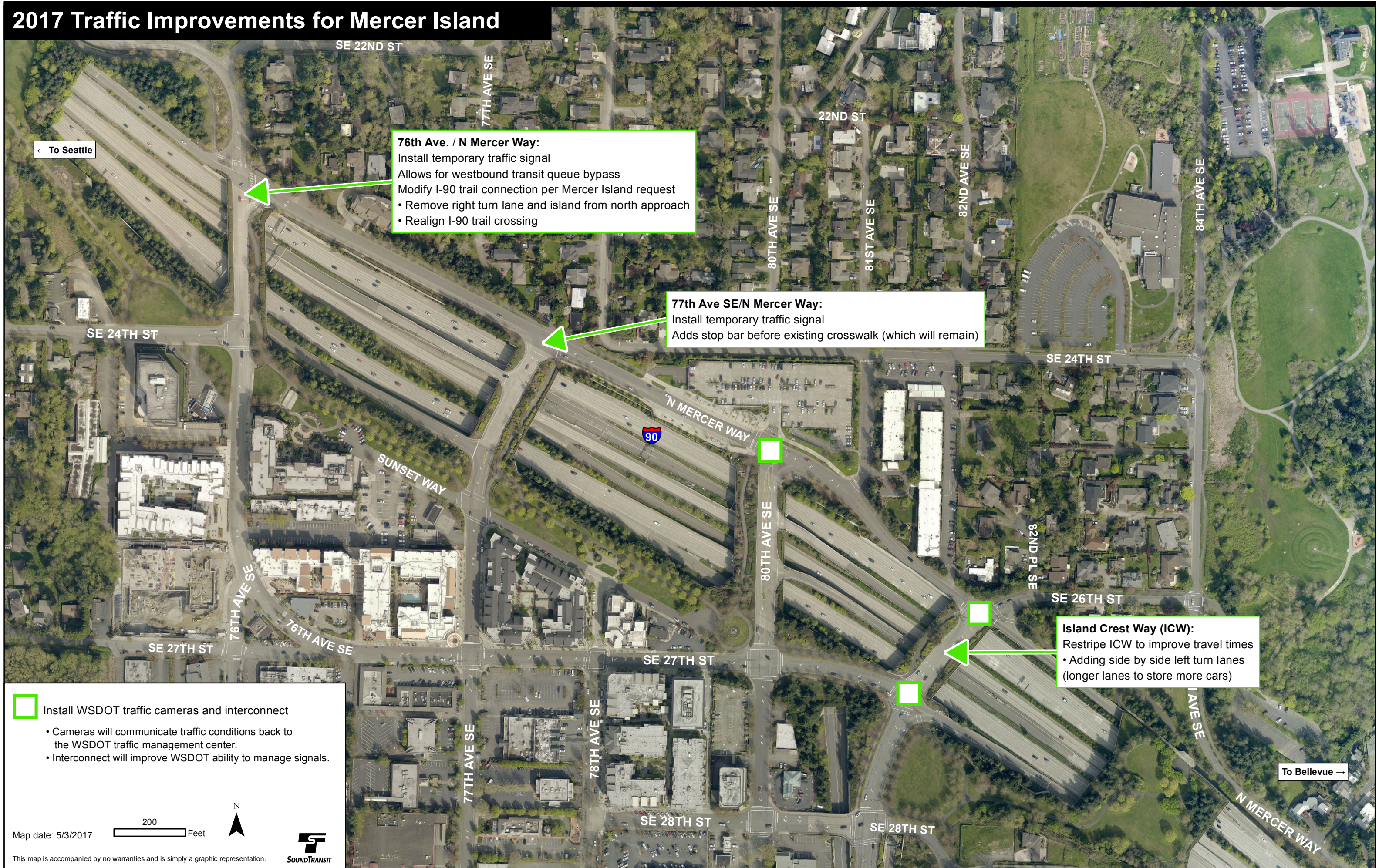


# 2017 Traffic Improvements for Mercer Island



**76th Ave. / N Mercer Way:**  
 Install temporary traffic signal  
 Allows for westbound transit queue bypass  
 Modify I-90 trail connection per Mercer Island request  
 • Remove right turn lane and island from north approach  
 • Realign I-90 trail crossing

**77th Ave SE/N Mercer Way:**  
 Install temporary traffic signal  
 Adds stop bar before existing crosswalk (which will remain)

**Island Crest Way (ICW):**  
 Restripe ICW to improve travel times  
 • Adding side by side left turn lanes  
 (longer lanes to store more cars)

**Install WSDOT traffic cameras and interconnect**  
 • Cameras will communicate traffic conditions back to the WSDOT traffic management center.  
 • Interconnect will improve WSDOT ability to manage signals.

Map date: 5/3/2017

200 Feet

N

**SOUNDTRANSIT**

This map is accompanied by no warranties and is simply a graphic representation.