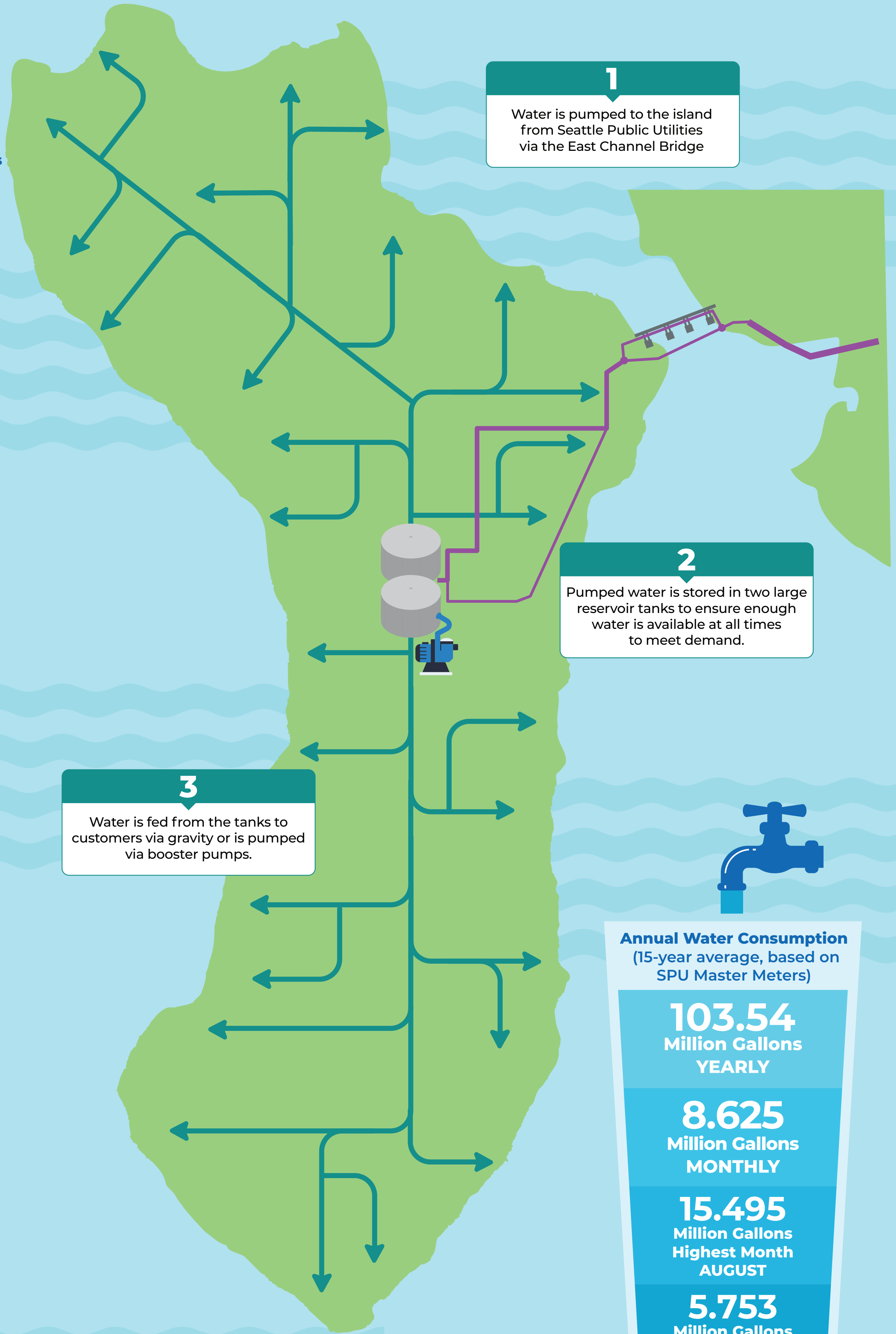




# Mercer Island Water System Overview



**Our Water Source:**  
Seattle Public Utilities (SPU)



**120+ Miles**  
(635,110 feet)  
Length of water mains/pipes on the Island

**4 Million Gallons**  
Capacity of each reservoir tank

**7890**  
Water Connections

**24" to 16"**  
Diameter range of water pipes  
From SPU to reservoir tanks (bridge line, underwater line)

**30" to 2"**  
Diameter Range of Water Pipes  
From reservoir to homes and businesses

**Pipe Material**  
Cast Iron, Ductile Iron, Asbestos Concrete, Copper, and Steel

**7**  
Booster Pumps  
Reservoir site  
6 Pumps - First Hill

**85**  
Pressure Reducing Stations

**18**  
Water Quality Testing Stations

**1071**  
Fire hydrants

**2**  
Pumped water is stored in two large reservoir tanks to ensure enough water is available at all times to meet demand.

**3**  
Water is fed from the tanks to customers via gravity or is pumped via booster pumps.



**Annual Water Consumption**  
(15-year average, based on SPU Master Meters)

**103.54**  
Million Gallons  
YEARLY

**8.625**  
Million Gallons  
MONTHLY

**15.495**  
Million Gallons  
Highest Month  
AUGUST

**5.753**  
Million Gallons  
Lowest Month  
FEBRUARY