



# CITY OF MERCER ISLAND 21-11 RESERVOIR IMPROVEMENTS

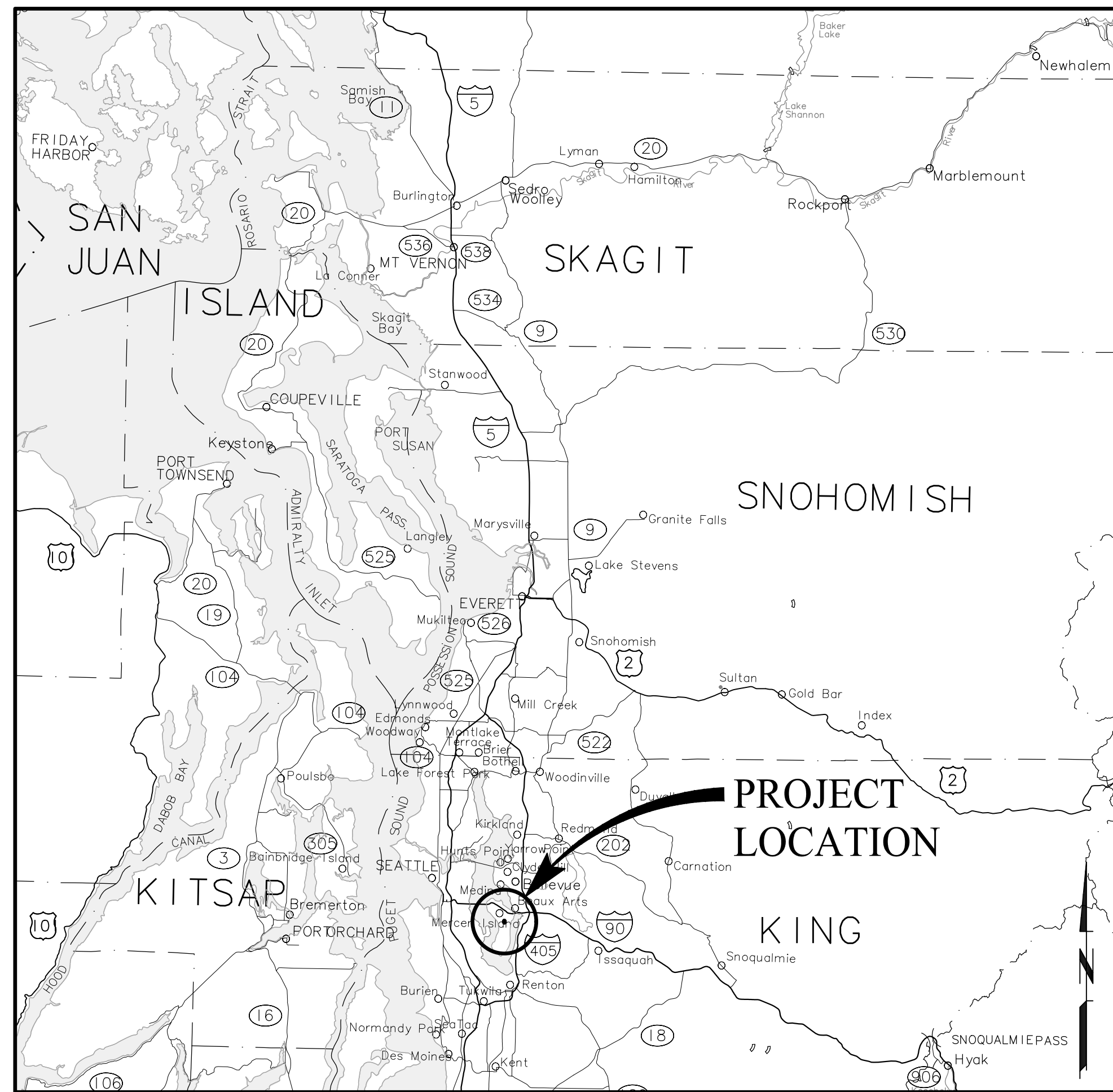
## FEBRUARY 2021

### CITY OF MERCER ISLAND OFFICIALS

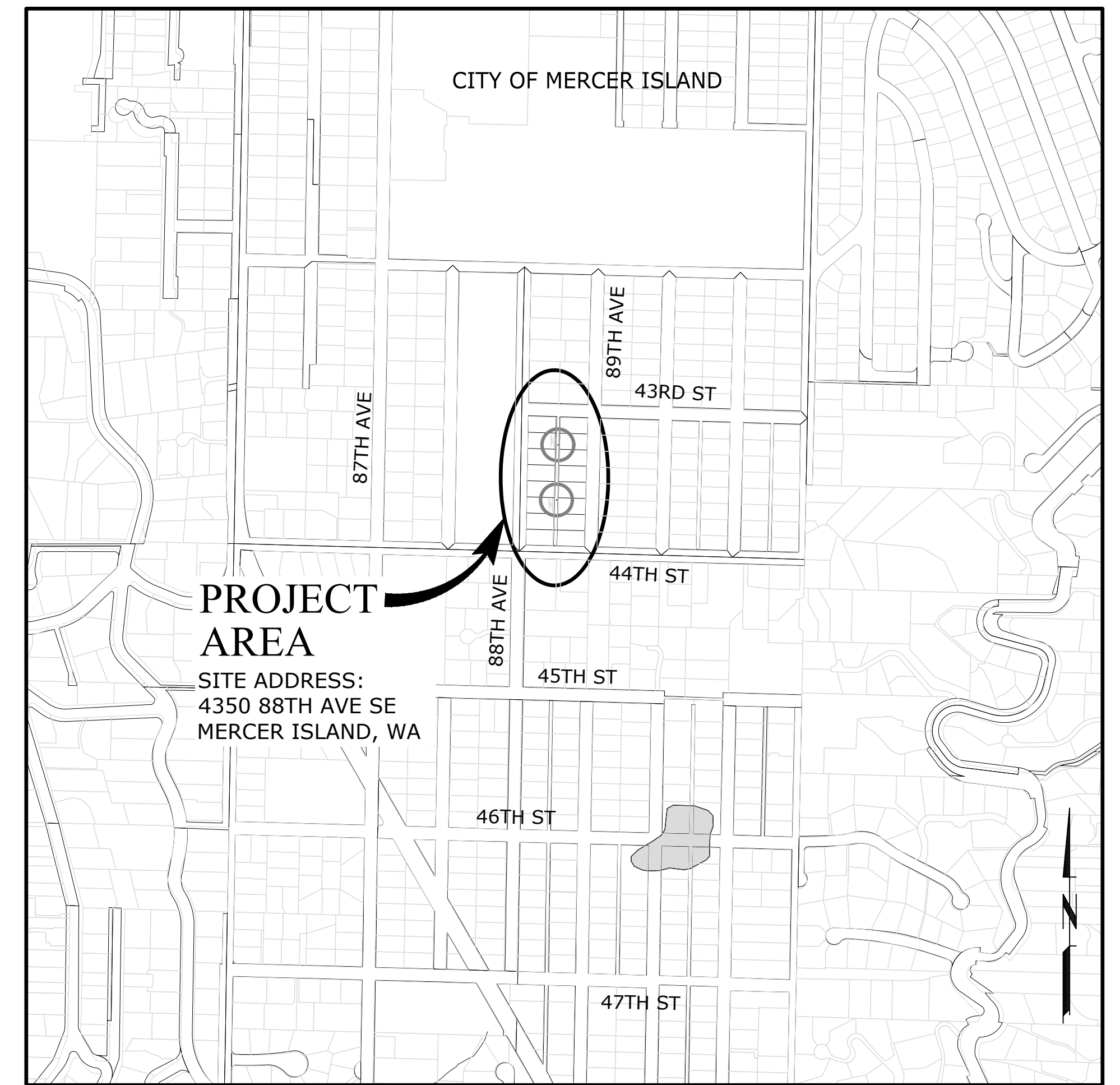
BENSON WONG	MAYOR
LISA ANDERL	COUNCIL MEMBER
JAKE JACOBSON	COUNCIL MEMBER
SALIM NICE	COUNCIL MEMBER
CRAIG REYNOLDS	COUNCIL MEMBER
DAVID ROSEBAUM	COUNCIL MEMBER
JASON KINTNER	PUBLIC WORKS DIRECTOR
DEB ESTRADA	CITY CLERK
JESSI BON	CITY MANAGER
BIO PARK	CITY ATTORNEY

### INDEX OF DRAWINGS

GENERAL	
1	G-1 TITLE SHEET, VICINITY MAP, LOCATION MAP, AND INDEX OF DRAWINGS
2	G-2 LEGEND, ABBREVIATIONS AND GENERAL NOTES
CIVIL	
3	C-1 EXISTING CONDITIONS AND IMPROVEMENTS SITE PLAN
4	C-2 DRAIN AND OVERFLOW PLAN, SECTION AND DETAILS
5	C-3 NORTH RESERVOIR AIR VENT PLAN, SECTION AND DETAILS
6	C-4 NORTH RESERVOIR HATCH, LADDER AND HOLE REPAIR PLAN, SECTION AND DETAILS
7	C-5 SOUTH RESERVOIR HATCH PLAN, SECTION AND DETAILS



**VICINITY MAP**  
SCALE: 1"=50,000'



**LOCATION MAP**  
SCALE: 1"=500'



Know what's below.  
Call before you dig.



H:\LEVT\_Projects\20\2817 - Mercer Island - DOH Sanitary Survey Res. Imp\CAD\Sheets\20-2817-WA-GEN.dwg G-2 2/10/2021 5:20 PM HCM 23.0s (LMS Tech)

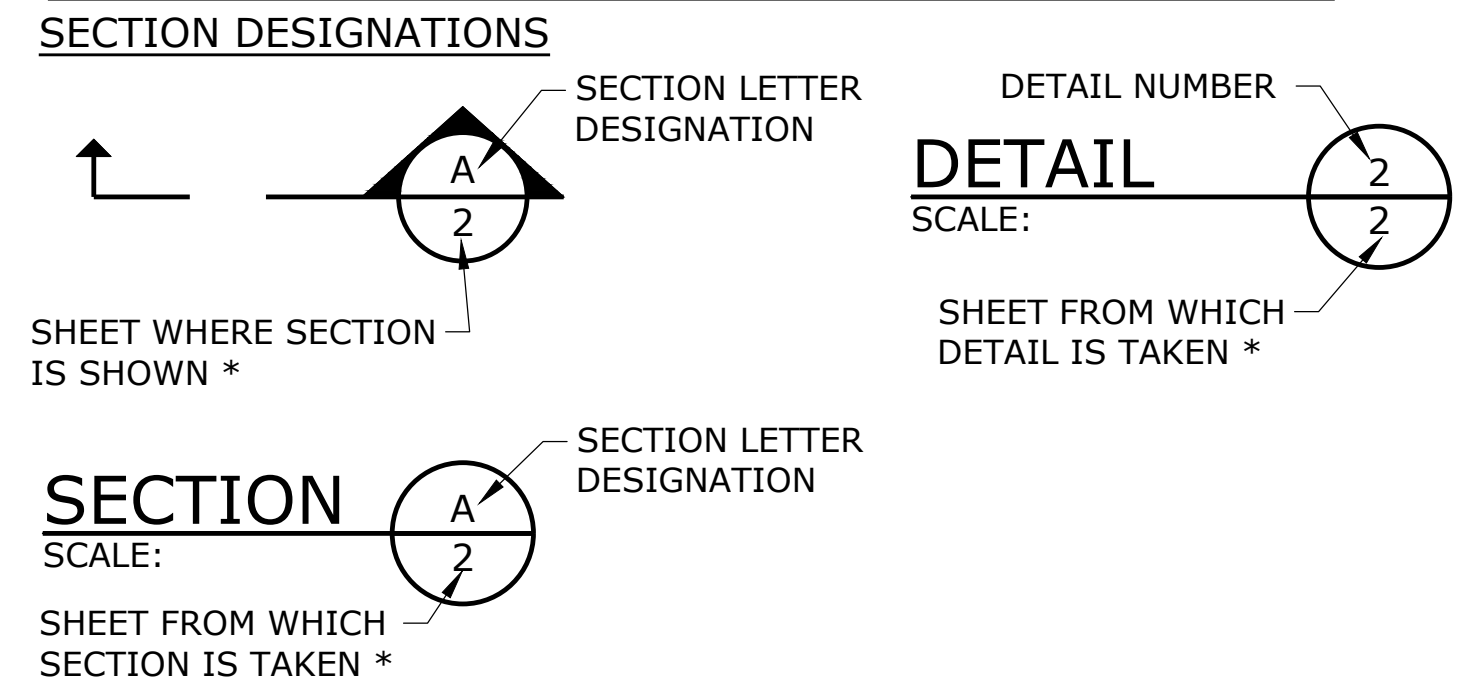
## ABBREVIATIONS

ABAN	ABANDON	N	NORTH
ABAND	ABANDONED	NE	NORTHEAST
AC	ASBESTOS CEMENT	NIC	NOT IN CONTRACT
ADPTR	ADAPTER	NOM	NOMINAL
AL	ALUMINUM	NTS	NOT TO SCALE
APPROX	APPROXIMATE		
ASPH	ASPHALT	OC	ON CENTER
ASSY	ASSEMBLY	OD	OUTSIDE DIAMETER
ATB	ASPHALT TREATED BASE	OHWM	ORDINARY HIGH WATER MARK
AVE	AVENUE		
AWWA	AMERICAN WATER WORKS ASSOCIATION	PCCP	PORTLAND CEMENT COMLHETE PAVEMENT
		PH	POT HOLE
BFV	BUTTERFLY VALVE	PL	PLASTIC
BLDG	BUILDING	POC	POINT OF CONNECTION
BMP	BEST MANAGEMENT PRACTICES	PROP	PROPOSED
BTM	BOTTOM	PSF	POUNDS PER SQUARE FOOT
		PVC	POLYVINYL CHLORIDE
C&G	CURB & GUTTER	PVMT	PAVEMENT
C	CENTERLINE	PWR	POWER
CARV	COMBINATION AIR RELEASE VALVE		
CB	CATCH BASIN	RESTR	RESTRAIN(ED)
CDF	CONTROLLED DENSITY FILL	RJ	RESTRAINED JOINT PIPE
CL	CLASS	RT	RIGHT
CLR	CLEARANCE	R/W	RIGHT OF WAY
CMP	CORRUGATED METAL PIPE		
CO	CLEANOUT	S	SOUTH
COORD	COORDINATE	SCHED	SCHEDULE
CONC	COMLHETE	SD	STORM DRAIN
CPLG	COUPLING	SDMH	STORM DRAIN MANHOLE
CRL	CURB RAMP LENGTH	SERV	SERVICE
CSBC	CRUSHED SURFACING BASE COURSE	SHT(S)	SHEET(S)
		SL	SLOPE
CSTC	CRUSHED SURFACING TOP COURSE	SPECS	SPECIFICATIONS
		SPL	SPOOL
CY	CUBIC YARD	SQ	SQUARE
		SS	SANITARY SEWER
DET	DETAIL	SSCO	SANITARY SEWER CLEANOUT
DI	DUCTILE IRON	SSMH	SANITARY SEWER MANHOLE
DIA	DIAMETER		
DOE	DEPARTMENT OF ECOLOGY	ST	STREET
DWG	DRAWING	STA	STATION
DWY	DRIVEWAY	STD	STANDARD
		STL	STEEL
		S/W	SIDEWALK
E	EAST		
EA	EACH	T, TEL	TELEPHONE
ELEV	ELEVATION	TB	THRUST BLOCK
EQ	EQUAL	TEMP	TEMPORARY
EX	EXISTING	TESC	TEMPORARY EROSION AND SEDIMENT CONTROL
EXIST	EXISTING		
		TRANS	TRANSITION
		TYP	TYPICAL
FH	FIRE HYDRANT		
FL	FLOW LINE		
FLG	FLANGE	VERT	VERTICAL(LY)
FM	FORCE MAIN		
FT	FEET		
		UGP	UNDERGROUND POWER LINE
		UGT	UNDERGROUND TELEPHONE
G	GAS		
GALV	GALVANIZED	W	WATER, WEST
GCC	GRADE CORRECTION CURB	W/	WITH
GEN	GENERAL	WM	WATER METER
GV	GATE VALVE	WSDOT	WASHINGTON DEPARTMENT OF TRANSPORTATION
HMA	HOT MIX ASPHALT	WV	WATER VALVE
HORIZ	HORIZONTAL(LY)	WW	WINGWALL
HW	HEADWALL		
ID	INSIDE DIAMETER		
IE	INVERT ELEVATION		
INSL	INSTALL		
INV	INVERT		
L	LENGTH		
LF	LINEAR FOOT		
LS	LONG SLEEVE		
LT	LEFT		
LTF	LENGTH TO FIT		
MFR	MANUFACTURER		
MH	MANHOLE		
MJ	MECHANICAL JOINT		
MIN	MINIMUM		
MUTCD	MANUAL ON UNIFORM TRAFFIC CONTROL DEVICES		

## LEGEND

	EXISTING	PROPOSED
WATERLINE	--- 6"W ---	--- 8" DI ---
ELECTRICITY (UNDERGROUND)	--- E ---	
FIBER OPTIC	----- FO -----	
GAS	--- 4"G ---	
TELEPHONE/TELEMETRY	--- T ---	
OVERHEAD LINE	--- OHP ---	
SANITARY SEWER LINE	--- 8"SS ---	--- 8" SS ---
SANITARY SEWER FORCE MAIN	--- 6"FM ---	
STORM DRAIN	--- 8"SD ---	--- 8" SD ---
CULVERT	(--- SD ---)	
ABANDON PIPE	/ / / / / / / /	/ / / / / / / /
DRAINAGE DITCH	-----	
WOOD FENCE	□ □ □ □ □ □	
CHAIN LINK FENCE	X X X X X X	X X X X X X
TEMPORARY SILT FENCE	□ □ □ □ □ □	□ □ □ □ □ □
GUARDRAIL	○ ○ ○ ○ ○ ○ ○ ○	
ROCK WALL	○ ○ ○ ○ ○ ○ ○ ○	
TREE/BUSH LINE	~ ~ ~ ~ ~ ~ ~ ~	
CENTERLINE	-----	
EASEMENT/PROPERTY LINE	-----	
RIGHT-OF-WAY	-----	
EDGE OF PAVEMENT/AC	=====	=====
EDGE OF GRAVEL	=====	=====
CURB	=====	=====
SIDEWALK	=====	=====
STRUCTURE OR FACILITY	=====	=====
CREEK/STREAM	~~~~~	~~~~~
CONTOUR MINOR	-----	-----
CONTOUR MAJOR	-----	-----
RAILROAD TIE WALL	-----	-----
MANHOLE	○	○
CLEAN-OUT	○	○
CATCH BASIN/FIELD INLET	□	□
TYPE 2 CATCH BASIN	⊕	⊕
WATER VALVE	⊗	⊗
GAS VALVE	⊗	⊗
AIR INJECTION ASSEMBLY	⊕	⊕
BLOW-OFF ASSEMBLY	⊕	⊕
AIR RELEASE ASSEMBLY	⊕	⊕
FIRE HYDRANT ASSEMBLY	⊕	⊕
WATER METER	⊕	⊕
JUNCTION BOX	⊕	⊕
UTILITY POLE	⊕	⊕
GUY WIRE	⊕	⊕
LIGHT	⊕	⊕
POWER POLE W/ LIGHT	⊕	⊕
POWER VAULT	⊕	⊕
TELEPHONE MANHOLE	⊕	⊕
MAILBOX	⊕	⊕
SIGN	⊕	⊕
BENCHMARK	⊕	⊕
SURVEY CONTROL	⊕	⊕
MONUMENT IN CASE	⊕	⊕
TREE DECIDUOUS	⊕	⊕
TREE CONIFEROUS	⊕	⊕
WATER FITTINGS	⊕	⊕
LONG PATTERN SLEEVE	⊕	⊕
PLUG	⊕	⊕
POT HOLE	⊕	⊕
BORING	⊕	⊕

## SECTION AND DETAIL DESIGNATIONS



\* NOTE: IF PLAN AND SECTION FOR DETAIL CALL-OUT AND DETAIL ARE SHOWN ON THE SAME DRAWING, DRAWING NUMBER IS REPLACED WITH A DASH.

## GENERAL NOTES

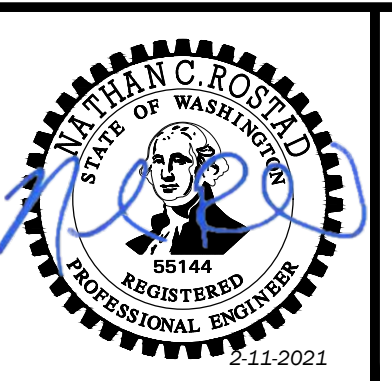
- ALL WORK AND MATERIALS SHALL CONFORM TO THE CURRENT EDITION OF THE CITY OF MERCER ISLAND DESIGN AND CONSTRUCTION STANDARDS AND SPECIFICATIONS, AND THE CURRENT EDITION OF THE WASHINGTON STATE DEPARTMENT OF TRANSPORTATION (WSDOT) STANDARD SPECIFICATIONS FOR ROAD, BRIDGE, AND MUNICIPAL CONSTRUCTION. A COPY OF THESE DOCUMENTS SHALL BE ON SITE DURING CONSTRUCTION. IN THE EVENT OF A CONFLICT, THE CITY OF MERCER ISLAND DESIGN AND CONSTRUCTION STANDARDS SHALL GOVERN.
- PRIOR TO ANY CONSTRUCTION ACTIVITY, THE CONTRACTOR SHALL ATTEND A PRECONSTRUCTION CONFERENCE WITH THE CITY. PRIOR TO SCHEDULING, THE CONTRACTOR MUST SUBMIT AND RECEIVE APPROVAL FOR THE TRAFFIC CONTROL PLAN, CITY PERMITS, TEMPORARY EROSION AND SEDIMENT CONTROL PLAN, PERFORMANCE BOND, COPY OF OTHER AGENCY PERMITS, A COPY OF THE CONTRACTOR'S LICENSE, AND PROOF OF INSURANCE COVERAGE.
- A COPY OF THE APPROVED CONSTRUCTION PLANS MUST BE ON THE JOB SITE WHEN CONSTRUCTION IS IN PROGRESS.
- ALL SITE WORK SHALL BE CONSTRUCTED IN ACCORDANCE WITH THE APPROVED PLANS. ANY DEVIATION FROM THE APPROVED PLANS WILL REQUIRE PRIOR APPROVAL IN WRITING FROM THE CITY.
- ALL OF THE LOCATIONS OF THE EXISTING UTILITIES SHOWN IN THE PLANS HAVE BEEN ESTABLISHED BY GIS DATA OR OBTAINED FROM AVAILABLE RECORDS AND SHALL THEREFORE BE CONSIDERED APPROXIMATE AND NOT NECESSARILY COMPLETE. IT IS THE SOLE RESPONSIBILITY OF THE CONTRACTOR TO INDEPENDENTLY VERIFY THE ACCURACY OF ALL UTILITY LOCATIONS.
- THE CONTRACTOR SHALL LOCATE AND PROTECT ALL CASTINGS AND UTILITIES DURING CONSTRUCTION AND SHALL CONTACT THE UNDERGROUND UTILITIES LOCATE SERVICE (1-800-424-5555 OR 811) AT LEAST 48 HOURS PRIOR TO CONSTRUCTION.
- INSPECTION AND ACCEPTANCE OF ALL WORK WILL BE ACCOMPLISHED BY REPRESENTATIVES OF THE CITY OF MERCER ISLAND. IT SHALL BE THE CONTRACTOR'S RESPONSIBILITY TO COORDINATE AND SCHEDULE APPROPRIATE INSPECTIONS, ALLOWING PROPER ADVANCE NOTICE. THE INSPECTOR MAY REQUIRE REMOVAL AND REPLACEMENT OF ITEMS THAT DO NOT MEET CITY STANDARDS OR WERE CONSTRUCTED WITHOUT INSPECTION.
- THE CONTRACTOR SHALL KEEP THE ON-SITE AND OFF-SITE STREETS CLEAN AT ALL TIMES BY CLEANING WITH A SWEEPING AND/OR VACUUM TRUCK. WASHING OF THESE STREETS WILL NOT BE ALLOWED WITHOUT PRIOR APPROVAL FROM THE CITY INSPECTOR.
- DEMOLITION OF EXISTING SURFACE AND BELOW GRADE FEATURES SHALL BE DETERMINED BY EXTENT OF PROPOSED IMPROVEMENTS.
- SURFACE FEATURES IDENTIFIED ON PLAN, SUCH AS LANDSCAPE WALL, SIDEWALK REPAIR, ETC, ARE NOT FULLY INCLUSIVE OF ALL ELEMENTS THAT MAY BE ENCOUNTERED DURING CONSTRUCTION THAT SHALL REQUIRE RESTORATION. CONTRACTOR SHALL VISIT THE SITE PRIOR TO BID TO DETERMINE EXTENT OF RESTORATION REQUIRED.
- UNLESS NOTED OTHERWISE, RESTORATION SHALL INCLUDE REPLACEMENT IN KIND BY THE CONTRACTOR OF ANY VEGETATION DISTURBED DURING EXCAVATION INCLUDING DISRUPTION TO ROOT BALL. REINSTALLATION OF EXISTING PLANT SHALL NOT BE ALLOWED UNLESS APPROVED BY THE CITY.

NO.	DATE	BY	REVISION

NOTICE

IF THIS BAR DOES NOT MEASURE 1" THEN DRAWING IS NOT TO SCALE

NCR DESIGNED  
HCM DRAWN  
MLH CHECKED



PROJECT NO.:	20-2817	SCALE:	AS SHOWN	DATE:	NOVEMBER 2020
--------------	---------	--------	----------	-------	---------------

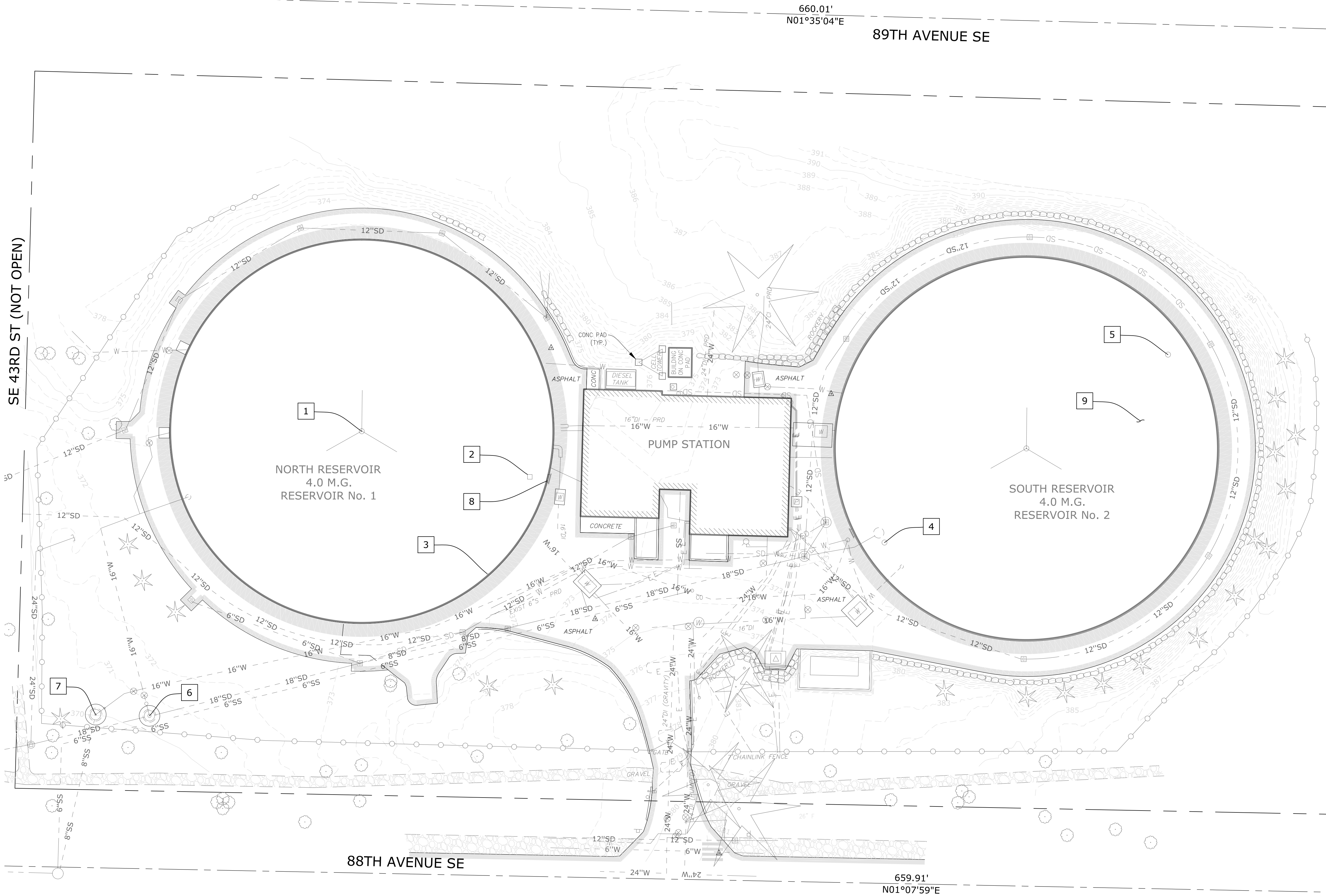
SHEET

**G-2**

2 of 7

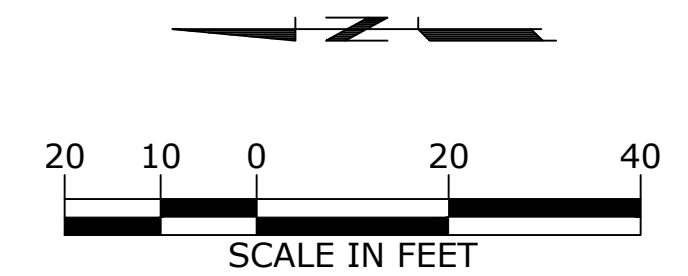


H:\LEVT\_Projects\20\2817 - Mercer Island - DOH Sanitary Survey Res. Imp\CAD\Sheets\20-2817-WA-CIVIL.dwg C-1 2/10/2021 5:21 PM HCM 23.0s (LMS Tech)



**KEY IMPROVEMENTS NOTES:**

- 1 REPLACE NORTH RESERVOIR AIR VENT
- 2 REPLACE GASKET SEAL ON NORTH RESERVOIR HATCH
- 3 REPAIR PEN-SIZED HOLE IN NORTH RESERVOIR, LOCATED ON UNDERSIDE OF ROOF OVERHANG
- 4 REPLACE GASKET SEAL ON SOUTH RESERVOIR HATCH 1
- 5 REPLACE GASKET SEAL ON SOUTH RESERVOIR HATCH 2
- 6 OVERFLOW TO STORM DRAIN - REPLACE SCREEN
- 7 DRAIN TO SEWER - REPLACE SCREEN
- 8 TRIM BOLTS AT TOP OF NORTH RESERVOIR EXTERIOR LADDER
- 9 PRESSURE WASH SOUTH RESERVOIR ROOF



**PLAN**  
SCALE: 1"=20'

NO.	DATE	BY	REVISION

**NOTICE**

0 1/2 1

IF THIS BAR DOES NOT MEASURE 1" THEN DRAWING IS NOT TO SCALE

NCR  
DESIGNED  
HCM  
DRAWN  
MLH  
CHECKED



**CITY OF MERCER ISLAND**  
**21-11 RESERVOIR IMPROVEMENTS**

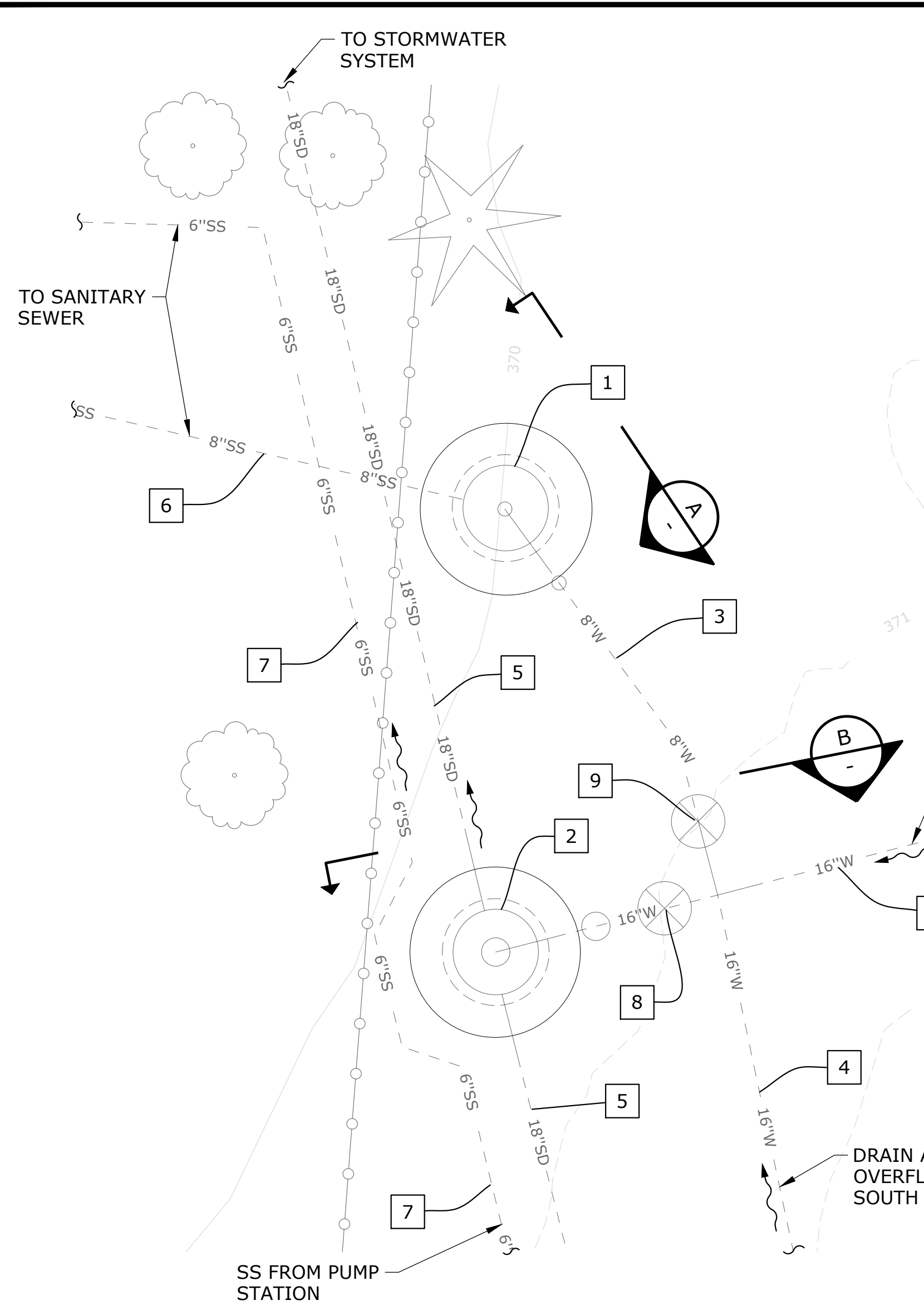
**EXISTING CONDITIONS AND IMPROVEMENTS SITE PLAN**

PROJECT NO.: 20-2817 SCALE: AS SHOWN DATE: NOVEMBER 2020

SHEET  
**C-1**  
3 of 7



H:\LEVT\_Projects\20\2817 - Mercer Island - DOH Sanitary Survey Res. Imp\CAD\Sheets\20-2817-WA-CIVIL.dwg C-2 2/10/2021 5:21 PM HCM 23.0s (LMS Tech)

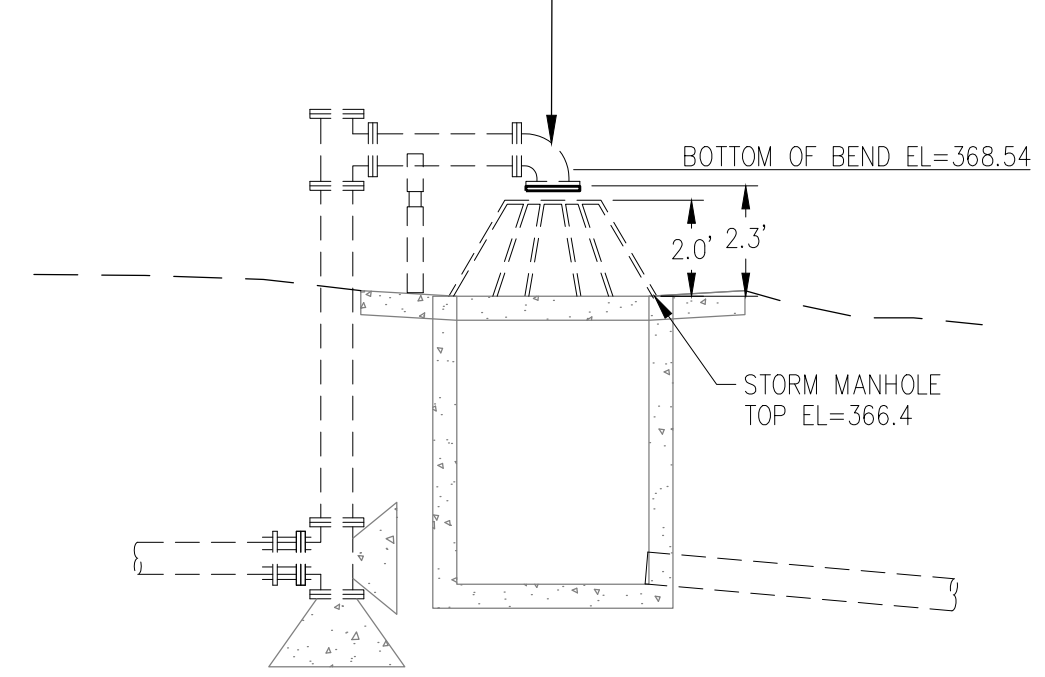


**EXISTING OVERFLOW AND DRAIN DISCHARGE CONFIGURATION**  
SCALE: 1"=5'

**EXISTING PIPING, VALVES & STRUCTURES:**

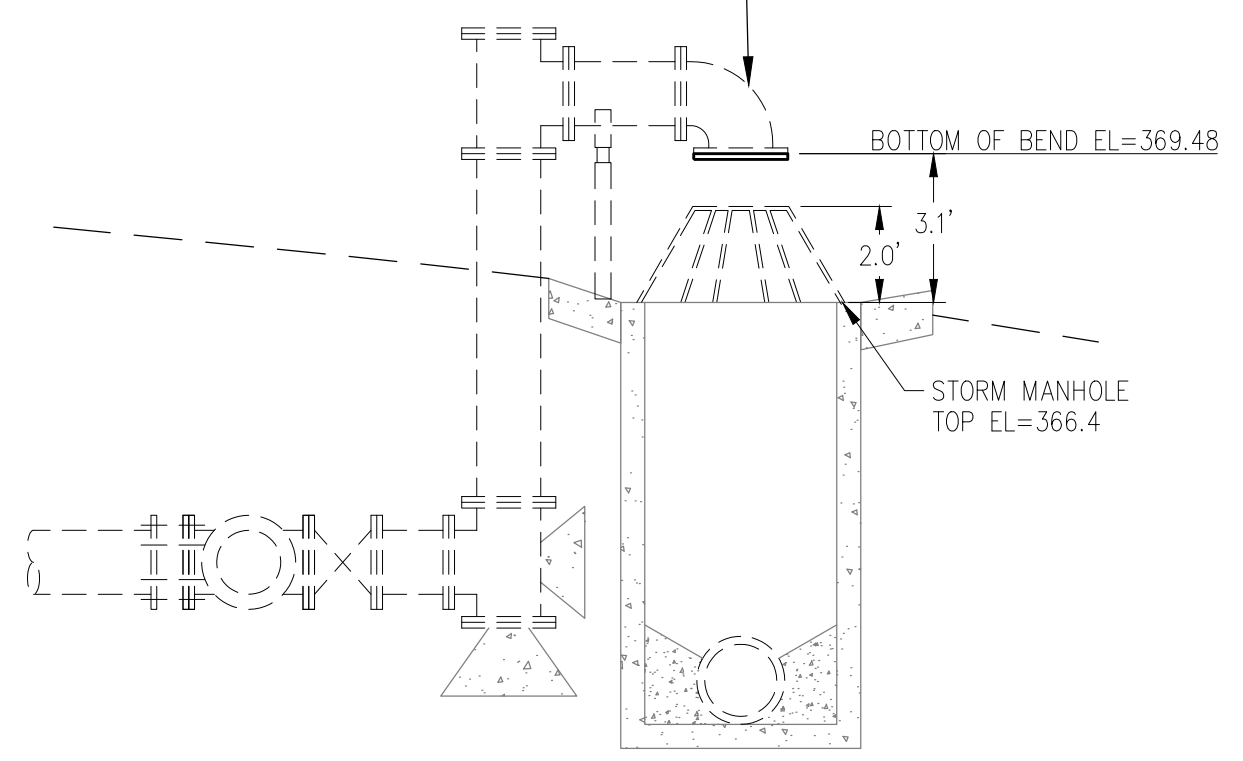
- 1 DRAIN TO SEWER STRUCTURE
- 2 OVERFLOW TO STORMWATER STRUCTURE
- 3 8" DIA WATER MAIN
- 4 16" DIA WATER MAIN
- 5 18" DIA STORM DRAIN
- 6 8" DIA PVC SANITARY SEWER
- 7 6" DIA PVC SANITARY SEWER
- 8 16" GATE VALVE, NORMALLY OPEN
- 9 8" GATE VALVE, NORMALLY CLOSED

EXIST 8" 90° BEND (FL) W/ SCREEN ON OUTLET  
INSTALL NEW 24 MESH SST SCREEN ABOVE  
4-MESH SST SCREEN WITH 0.047" OR GREATER  
WIRE DIAMETER. INSTALL MESH BETWEEN  
EXISTING FLANGE AND NEW RING FLANGE  
WITH RING GASKET.



**SECTION A  
DRAIN TO SEWER**  
SCALE: NTS

EXIST 16" 90° BEND (FL) W/ SCREEN ON OUTLET  
INSTALL NEW 24 MESH SST SCREEN ABOVE  
4-MESH SST SCREEN WITH 0.047" OR GREATER  
WIRE DIAMETER. INSTALL MESH BETWEEN  
EXISTING FLANGE AND NEW RING FLANGE WITH  
RING GASKET.

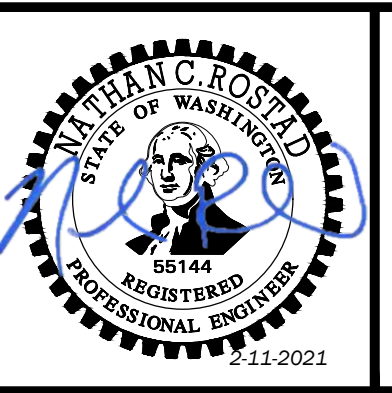


**SECTION B  
OVERFLOW TO STORMWATER**  
SCALE: NTS

NO.	DATE	BY	REVISION

NOTICE  
0 1/2 1  
IF THIS BAR DOES NOT MEASURE 1" THEN DRAWING IS NOT TO SCALE

NCR DESIGNED  
HCM DRAWN  
MLH CHECKED



**CITY OF MERCER ISLAND  
21-11 RESERVOIR IMPROVEMENTS**

**DRAIN AND OVERFLOW PLAN, SECTION AND DETAILS**

PROJECT NO.: 20-2817 SCALE: AS SHOWN DATE: NOVEMBER 2020

SHEET  
C-2  
4 of 7



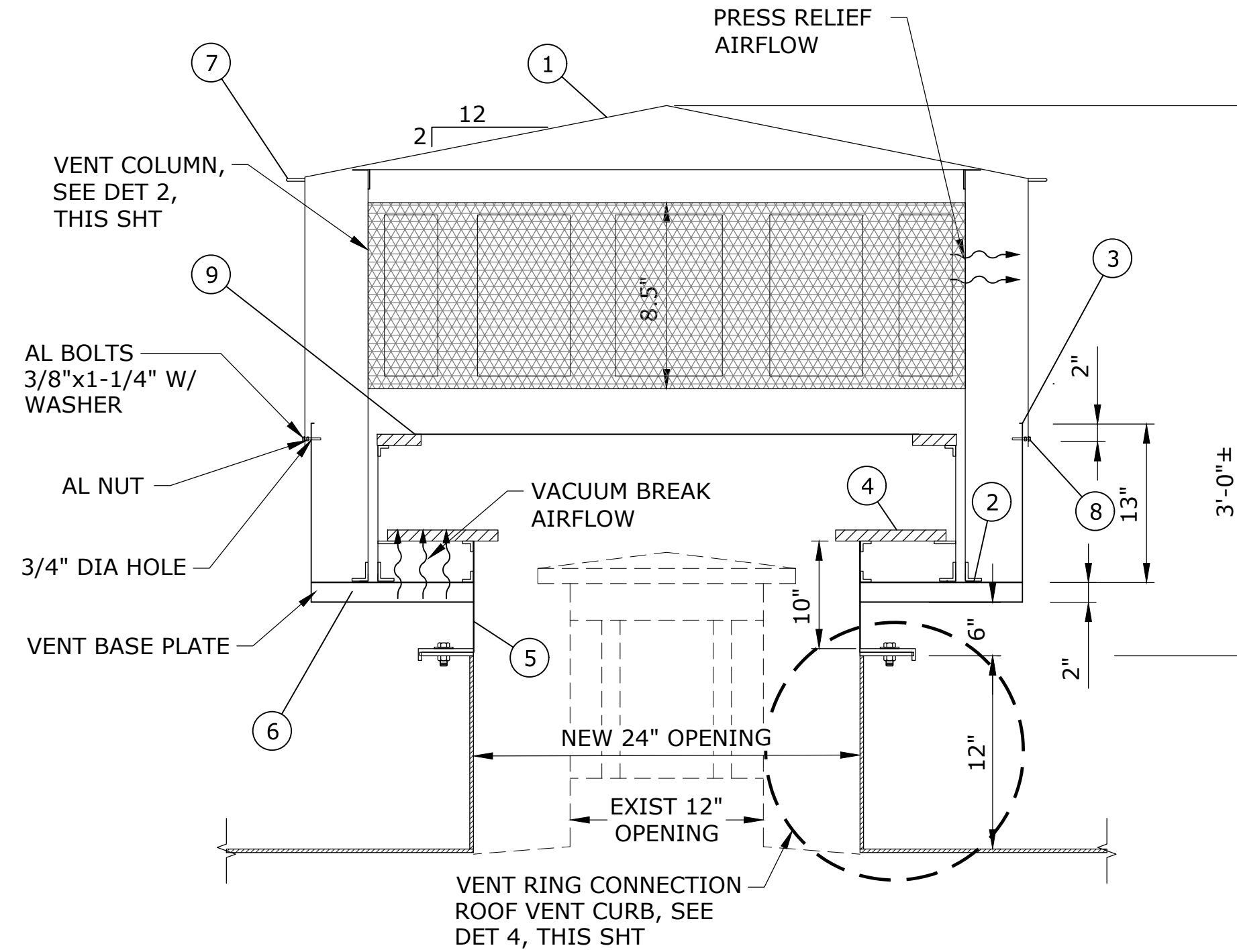
H:\LEVT\_Projects\20\2817 - Mercer Island - DOH Sanitary Survey Res. Imp\CAD\Sheets\20-2817-WA-CIVIL.dwg C-3 2/10/2021 5:21 PM HCM 23.0s (LMS Tech)



REMOVE EXISTING FALL PROTECTION LANYARD POST. INSTALL TROLLEY STYLE FALL PROTECTION ANCHOR RING AROUND NEW VENT PER SPECIFICATIONS

FOLLOWING INSTALLATION OF NEW VENT RING, PREPARE SURFACE AND RECOAT EXISTING DOUBLER PLATE PER SPECIFICATIONS

**NORTH RESERVOIR VENT**  
SCALE: NTS



**PRESSURE VACUUM VENT**  
SCALE: NTS

**ROOF VENT PARTS LIST:**

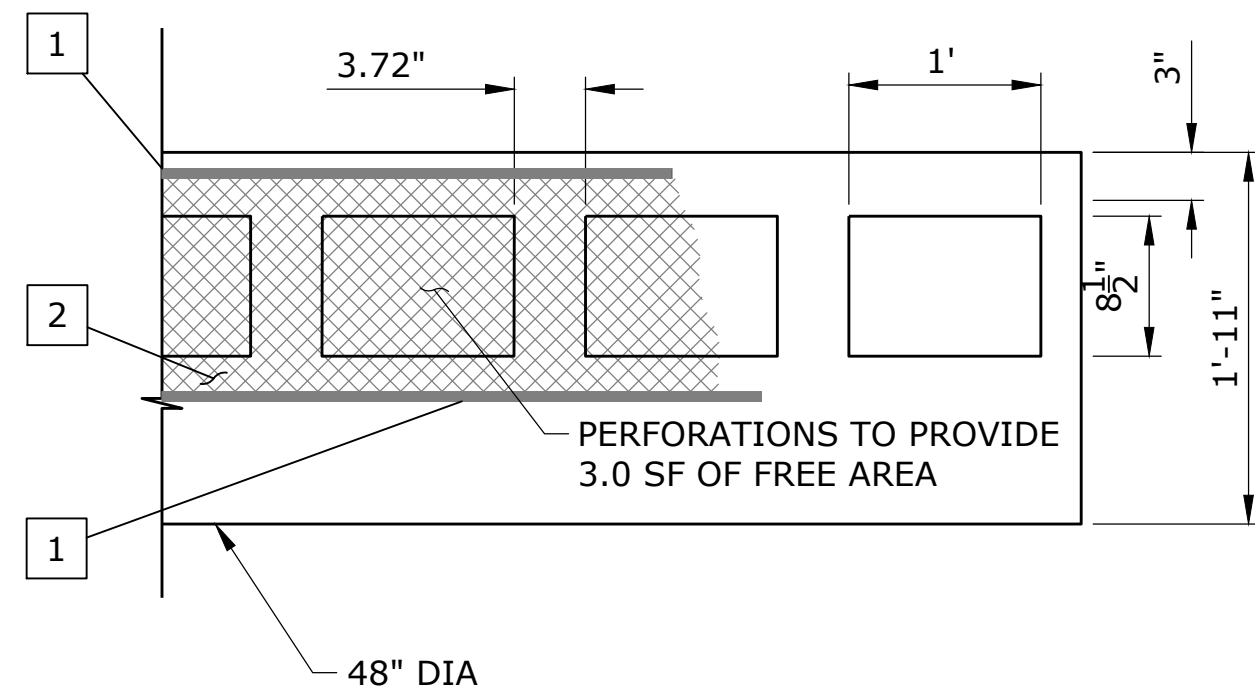
- 1 UPPER SHROUD, 1/8" THICK, 55" DIA, CONE PEAK TO 6:1 SLOPE
- 2 L2"x2"x1/4" BRACKET W/ 1/16" DIA HOLES EACH SIDE, CENTERED
- 3 LOWER SHROUD, 54" DIA W/ PERFORATIONS, SEE DET 6, THIS SHT
- 4 LINEAR HIGH DENSITY POLY VACUUM PALLET, 46"ODx23"ID
- 5 BASE COLUMN, 24" DIA
- 6 STIFFENERS, L1 1/2"x1 1/2"x1/4"
- 7 LIFTING HANDLE, 1"Øx6" W, TYP OF 4
- 8 SHROUD LATCH, TYP OF 8
- 9 PRESSURE PALLET, SEE DET 3, THIS SHT

- NOTE:**
1. ALL MATERIAL SHALL BE 3063 OR 5052 ALUMINUM UNLESS OTHERWISE SHOWN.
  2. PROVIDE STAINLESS STEEL HARDWARE WITH INSULATING WASHERS AND SLEEVES WHEN IN CONTACT WITH ALUMINUM.
  3. CONTRACTOR SHALL CUT AND REMOVE THE EXISTING ROOF VENT. INSTALL A NEW 24" DIAMETER PENETRATION, STEEL COLLAR AND FLANGE, AND FURNISH AND INSTALL THE NEW VENT AND FLANGE GASKET. DISPOSE OF THE EXISTING VENT.

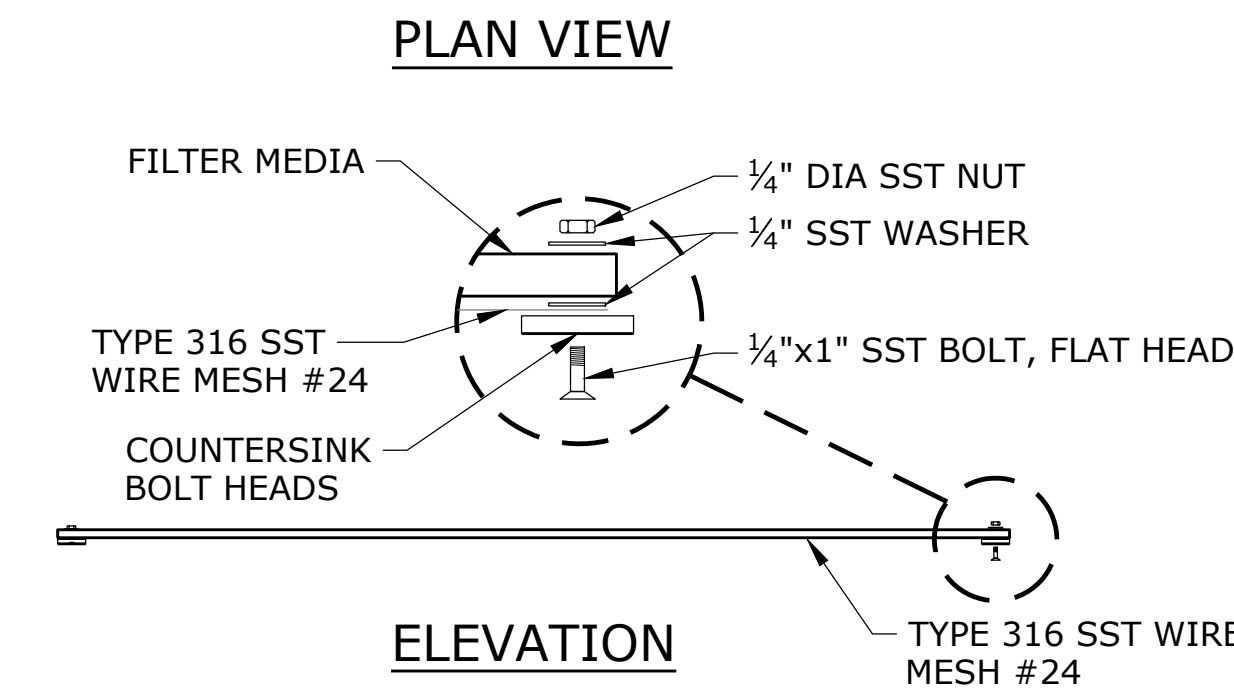
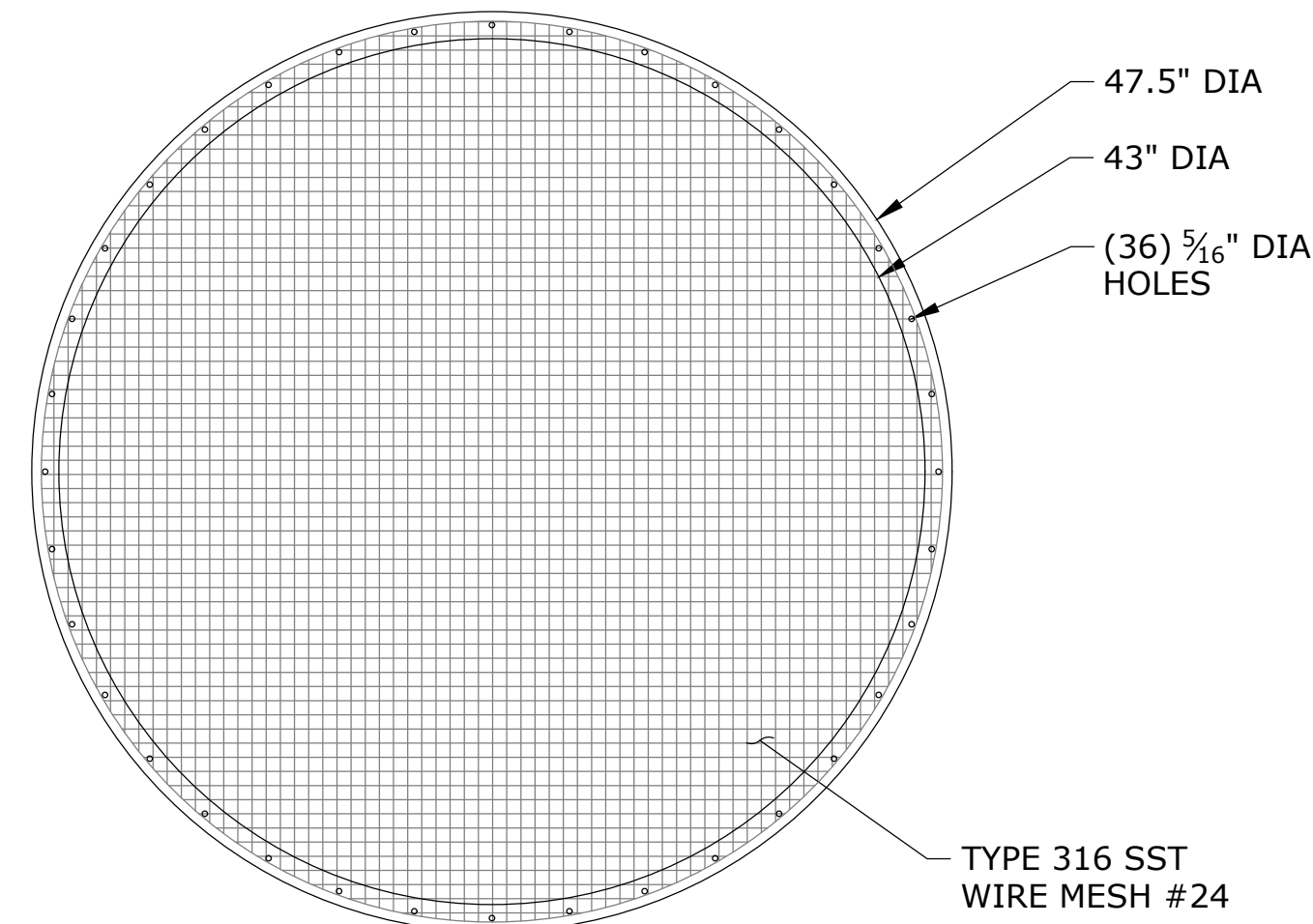
**VENT COLUMN PARTS LIST:**

- 1 SST 316 0.025" x 1/2" PERFORATED BAND W/ SST 316 AERO SEAL "BREEZE" GRIPPING STRAP & ADJUSTABLE WORM DRIVE CLAMP (2 TOTAL), INSTALL CLAMPING RINGS AFTER SCREEN IS IN PLACE
- 2 1/4" SST SCREEN, CUT TO SHAPE AS NEEDED

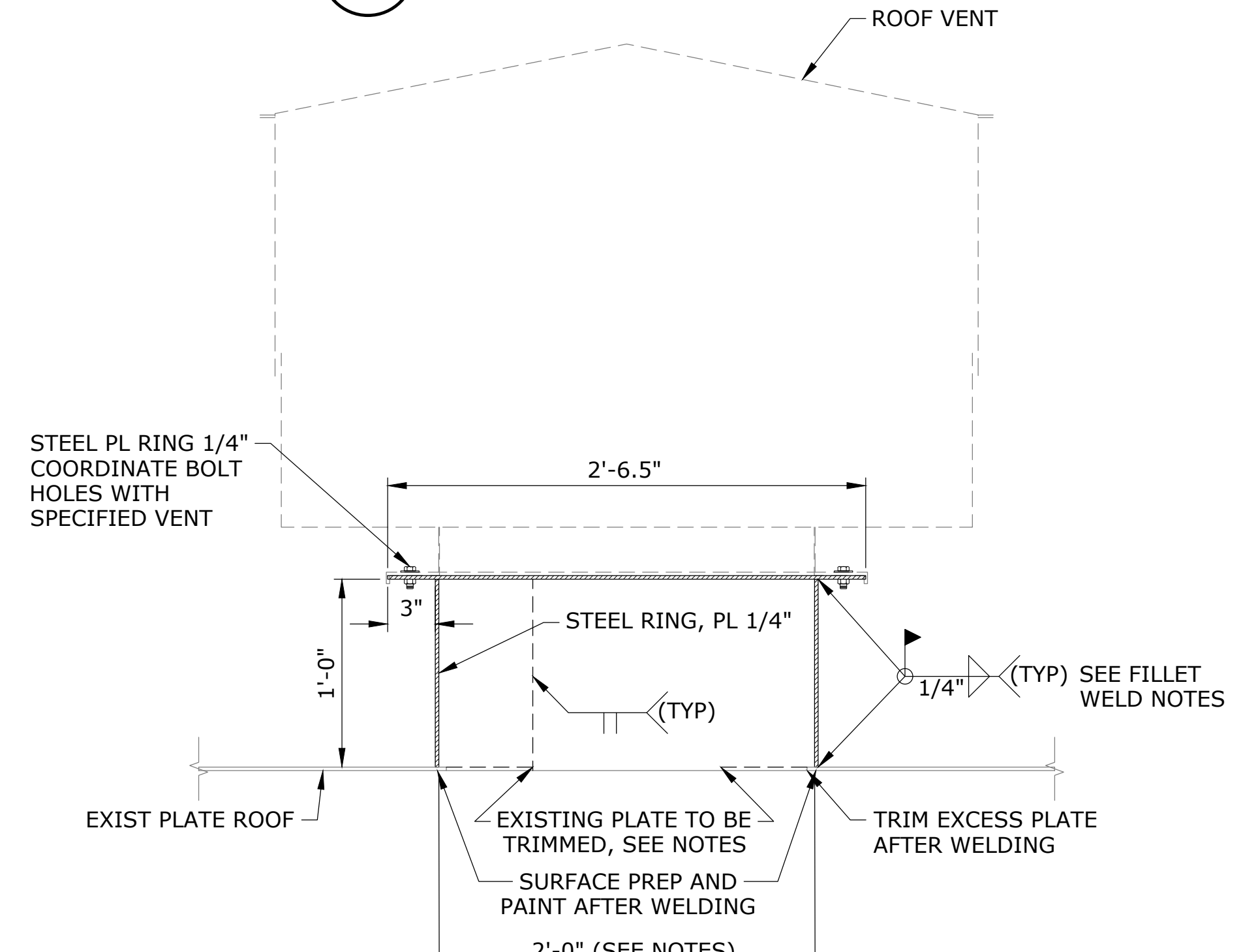
- NOTE:**
1. PROVIDE GASKETS AGAINST ALL STAINLESS STEEL SURFACES WITH INSULATED WASHER AND INSULATING SLEEVES ON BOLTS.



**VENT COLUMN DETAIL**  
SCALE: 1"=1'-0"



**PRESSURE PALLET DETAIL**  
SCALE: NTS



- FILLET WELD NOTES:**
1. ALONG EDGES OF MATERIAL LESS THAN 1/4" THICK; NOT GREATER THAN THE THICKNESS OF THE MATERIAL.
  2. ALONG EDGE OF MATERIAL 1/4" OR MORE IN THICKNESS; EQUAL TO THE THINNER PART MINUS 1/16".
- NOTE:**
1. CONTRACTOR TO EXAMINE EXISTING VENT OPENING AND RAFTER LAYOUT TO DETERMINE IF PROVIDING 18" DIAMETER ROOF OPENING FOR NEW VENT INSTEAD OF 24" DIAMETER IS NECESSARY.
  2. FOLLOWING TRIMMING ROOF PLATE, EXPOSED RAFTER TIPS TO BE RECOATED PER SPECIFICATIONS
  3. SEAL WELD ALL WELDED JOINTS.

**VENT RING DETAIL**  
SCALE: NTS

NOTICE	
0 1/2 1	
IF THIS BAR DOES NOT MEASURE 1" THEN DRAWING IS NOT TO SCALE	
NCR DESIGNED	HCM
DRAWN	MLH
CHECKED	

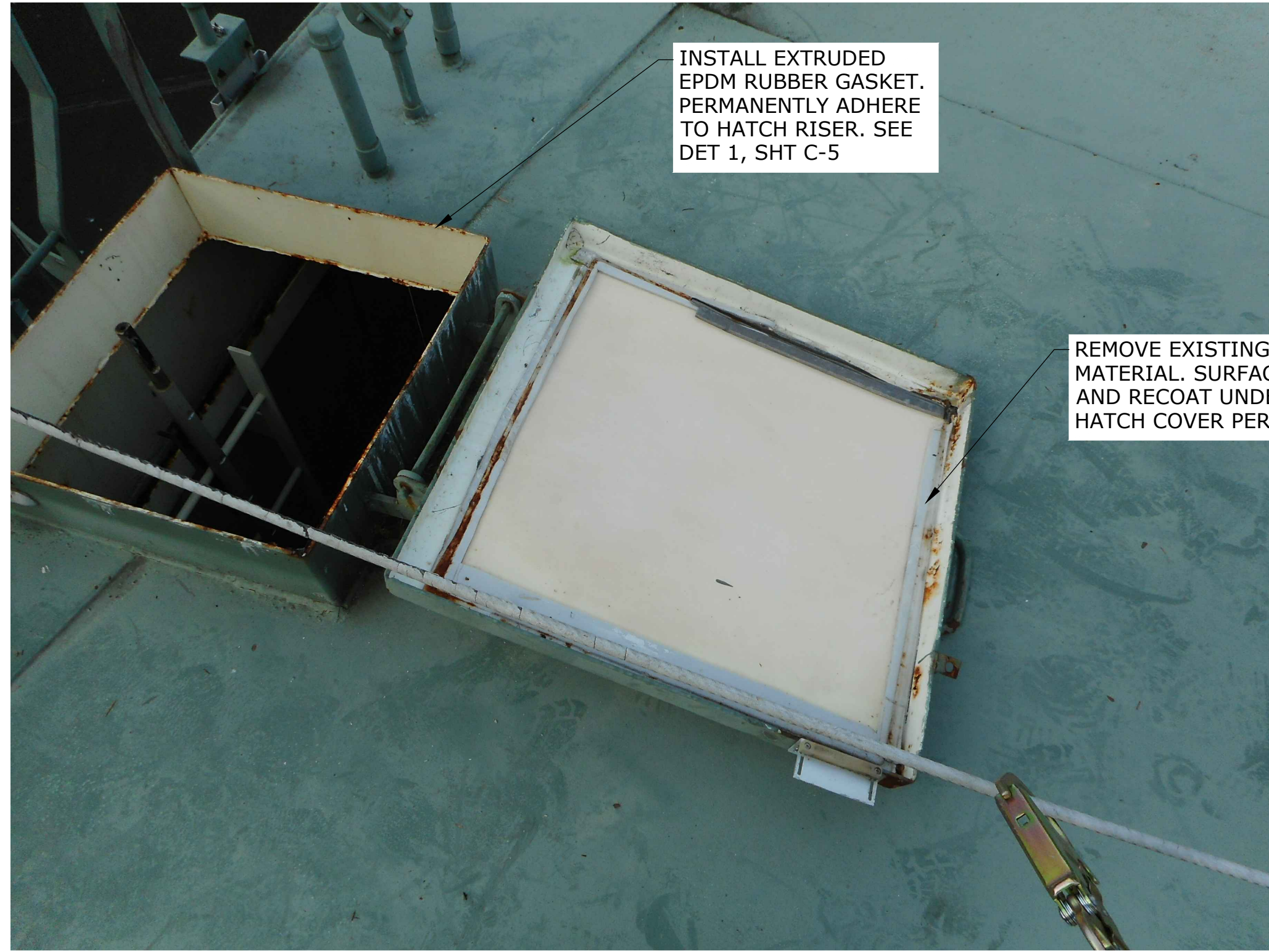


PROJECT NO.: 20-2817				SCALE: AS SHOWN		DATE: NOVEMBER 2020	
----------------------	--	--	--	-----------------	--	---------------------	--

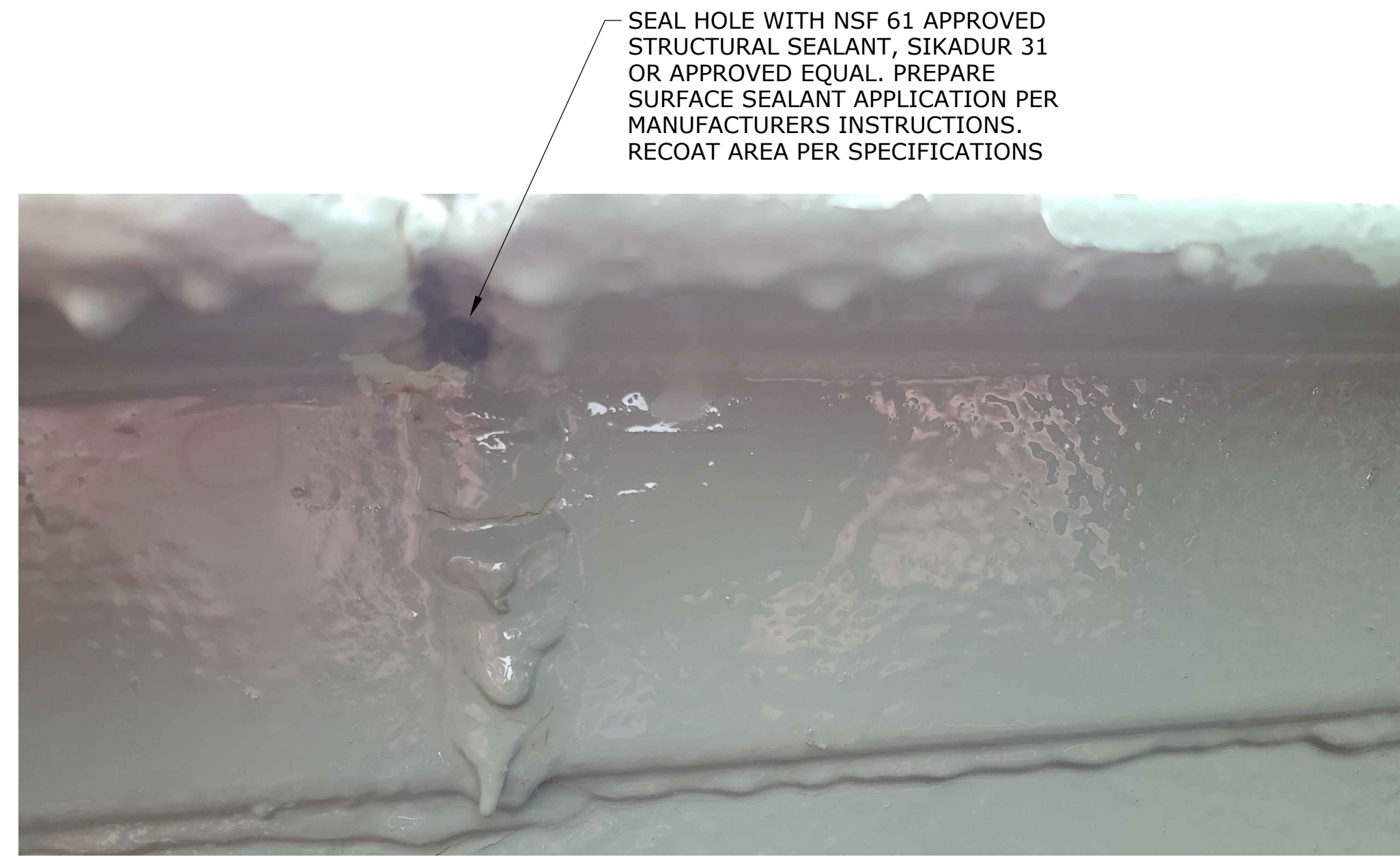
SHEET	C-3
	5 of 7



H:\LEVT\_Projects\20\2817 - Mercer Island - DOH Sanitary Survey Res. Imp\CAD\Sheets\20-2817-WA-CIVIL.dwg C-4 2/10/2021 5:21 PM HCM 23.0s (LMS Tech)



**NORTH RESERVOIR HATCH**  
SCALE: NTS



**NORTH RESERVOIR HOLE**  
SCALE: NTS



**NORTH RESERVOIR LADDER**  
SCALE: NTS

NO.	DATE	BY	REVISION

NOTICE  
0 1/2 1  
IF THIS BAR DOES NOT MEASURE 1" THEN DRAWING IS NOT TO SCALE

NCR DESIGNED  
HCM DRAWN  
MLH CHECKED



**CITY OF MERCER ISLAND  
21-11 RESERVOIR  
IMPROVEMENTS**

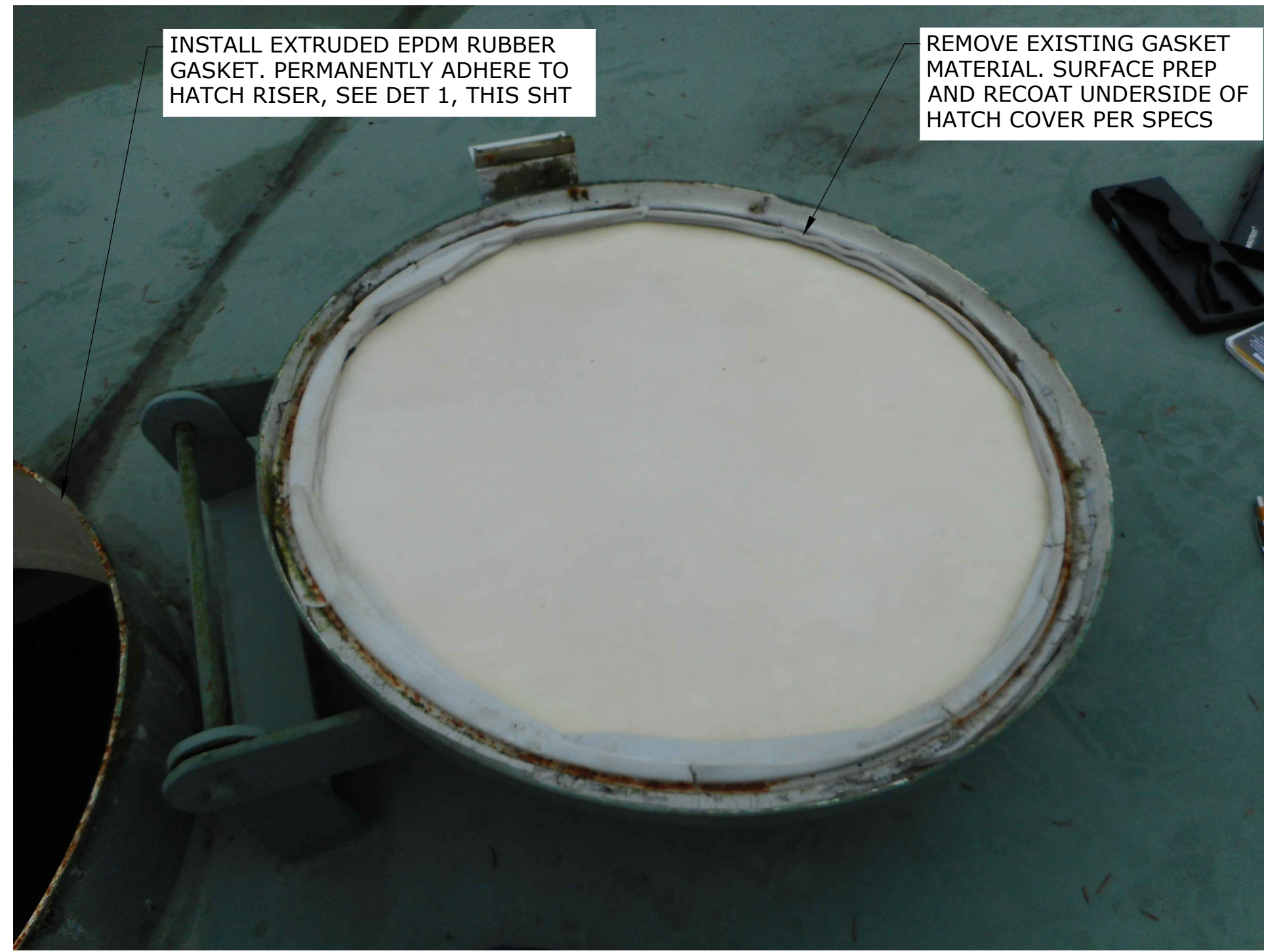
**NORTH RESERVOIR HATCH, LADDER  
AND HOLE REPAIR PLAN, SECTION  
AND DETAILS**

PROJECT NO.: 20-2817 SCALE: AS SHOWN DATE: NOVEMBER 2020

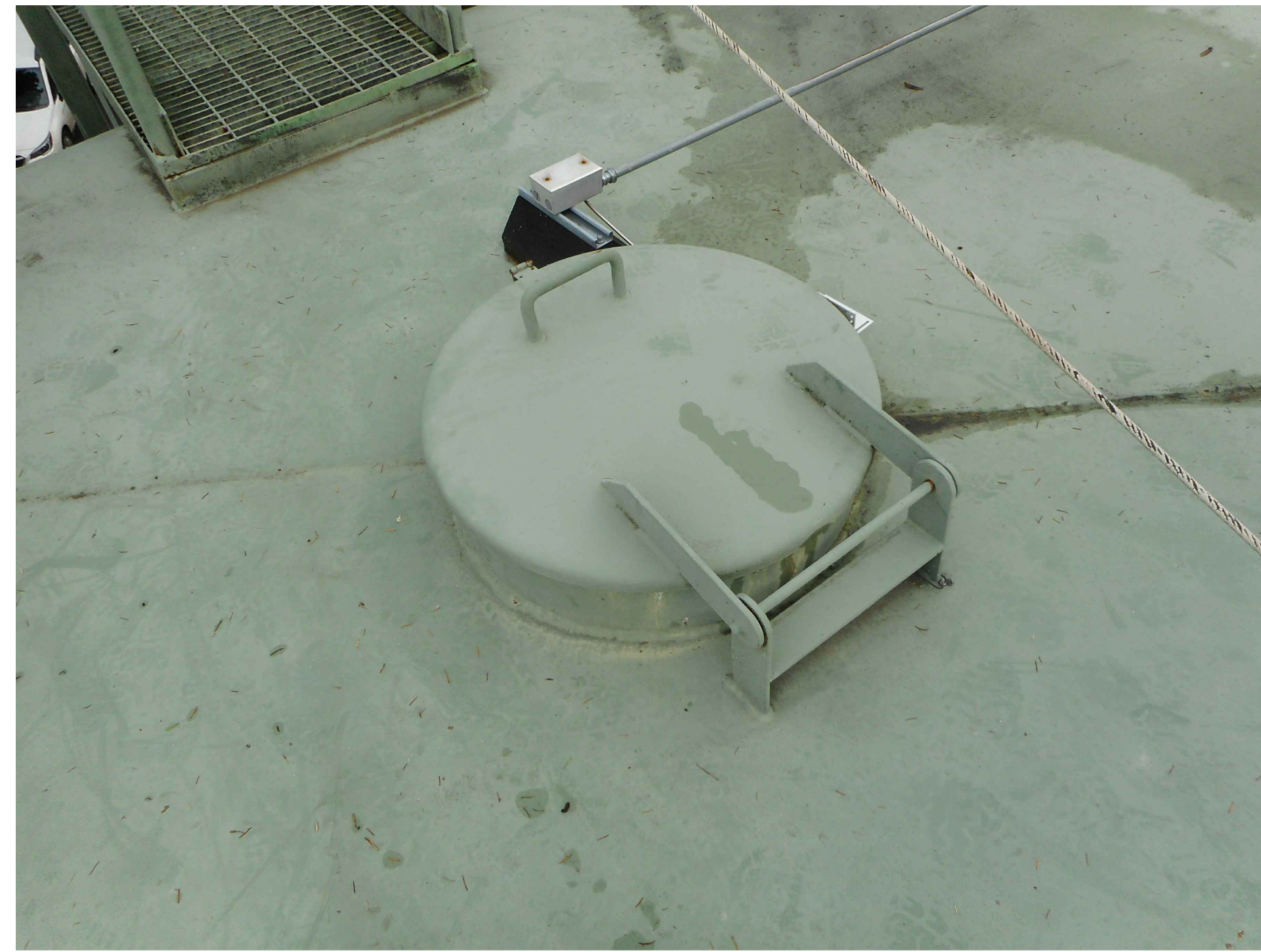
SHEET  
C-4  
6 of 7



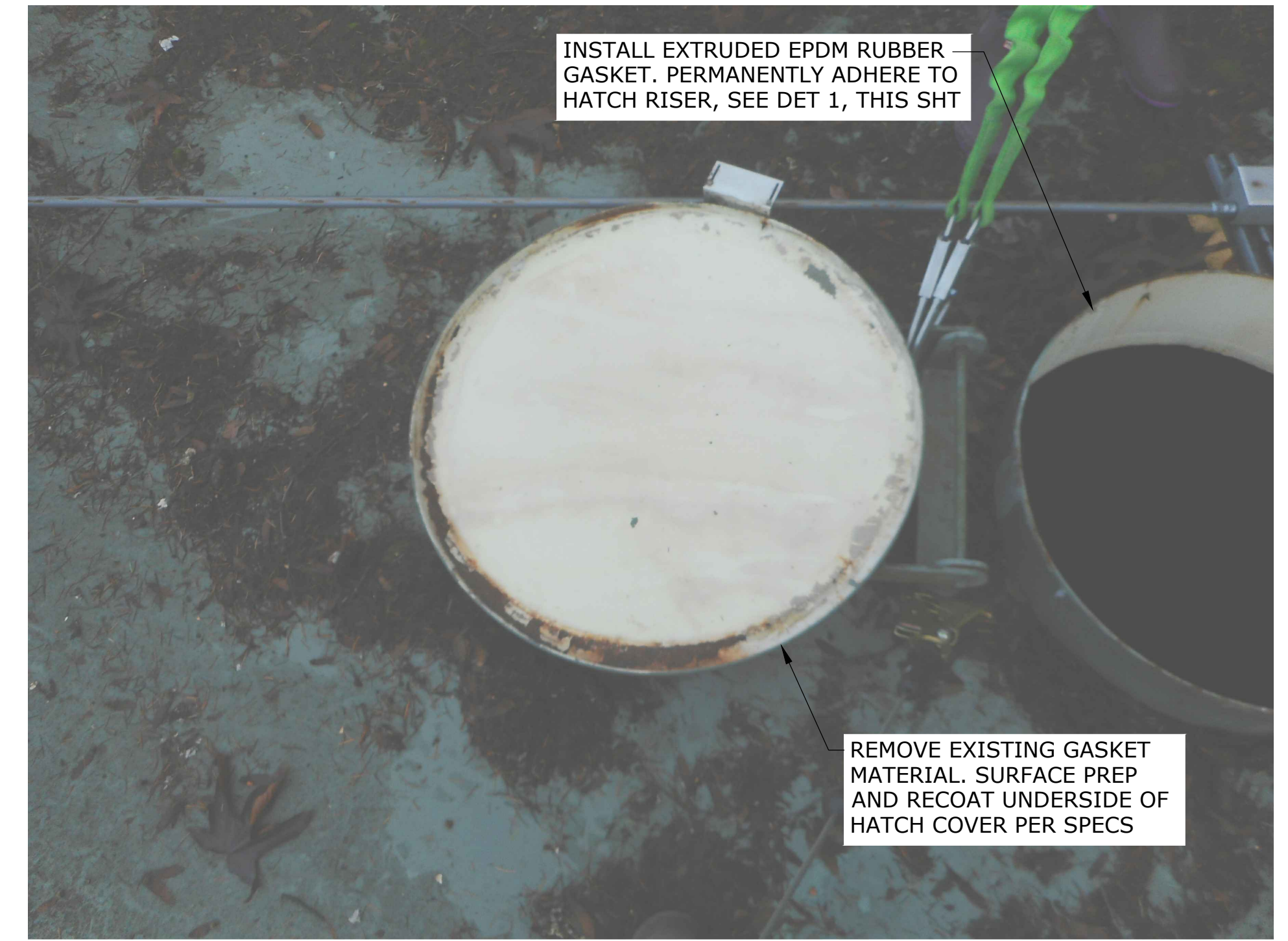
H:\LEVT\_Projects\20\2817 - Mercer Island - DOH Sanitary Survey Res. Imp\CAD\Sheets\20-2817-WA-CIVIL.dwg C-5 2/10/2021 5:21 PM HCM 23.0s (LMS Tech)



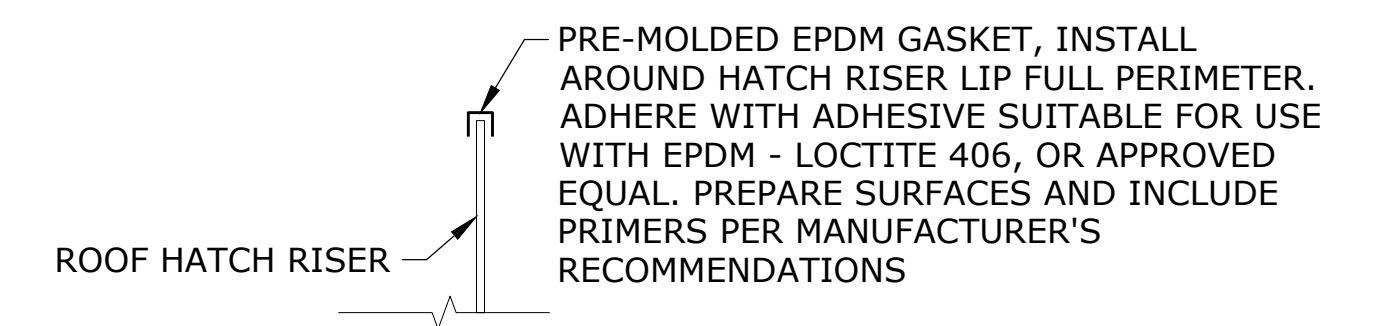
**SOUTH RESERVOIR HATCH 1 - OPEN**  
SCALE: NTS



**SOUTH RESERVOIR HATCH 1 - CLOSED**  
SCALE: NTS



**SOUTH RESERVOIR HATCH 2 - OPEN**  
SCALE: NTS



**ROOF HATCH GASKET INSTALLATION**  
SCALE: NTS

PRE-MOLDED EPDM GASKET, INSTALL AROUND HATCH RISER LIP FULL PERIMETER. ADHERE WITH ADHESIVE SUITABLE FOR USE WITH EPDM - LOCTITE 406, OR APPROVED EQUAL. PREPARE SURFACES AND INCLUDE PRIMERS PER MANUFACTURER'S RECOMMENDATIONS

1  
C-4  
C-5

NO.	DATE	BY	REVISION

NOTICE  
0 1/2 1  
IF THIS BAR DOES NOT MEASURE 1" THEN DRAWING IS NOT TO SCALE

NCR  
DESIGNED  
HCM  
DRAWN  
MLH  
CHECKED



**CITY OF MERCER ISLAND**  
**21-11 RESERVOIR IMPROVEMENTS**

**SOUTH RESERVOIR HATCH PLAN, SECTION AND DETAILS**

PROJECT NO.: 20-2817 SCALE: AS SHOWN DATE: NOVEMBER 2020

SHEET  
C-5  
7 of 7