

DIRECT BURY NOTES

1. AUGER THE SETTING HOLE
2. SET POLE IN HOLE & PLUMB STRAIGHT
3. BACKFILL WITH REQUIRED *MATERIAL, TAMPING EVERY 4"-6"
4. THE EXCAVATED MATERIAL CAN GENERALLY BE USED FOR BACKFILL, IN SOME SITUATIONS BETTER BACKFILL MAY BE REQUIRED

NOTES

1. EATON, STREETWORKS GAN GALLEON LED LUMINAIRE

480V TYPE III WITH SPILL CONTROL, PHOTO CONTROL RECEPTACLE, AND MAST ARM ADAPTER

CUSTOM COLOR BRONZE
2. HOUSE SIDE SHIELDS SHALL BE INSTALLED WHEN ABUTTING RESIDENTIAL STRUCTURES
3. EACH FIXTURE SHALL INCLUDE A PHOTOCELL OR GROUNDING CAP BASED ON EXISTING CIRCUIT CONFIGURATION.
4. A PULL STRING FURNISHED FROM BASEPLATE TO POLE TOP



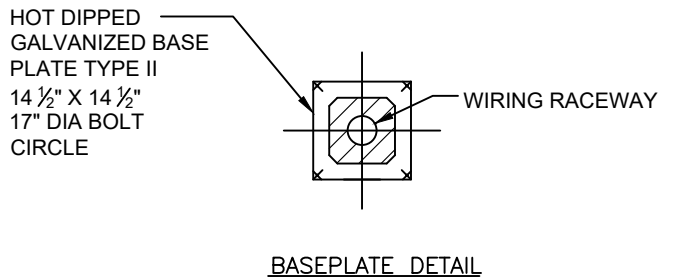
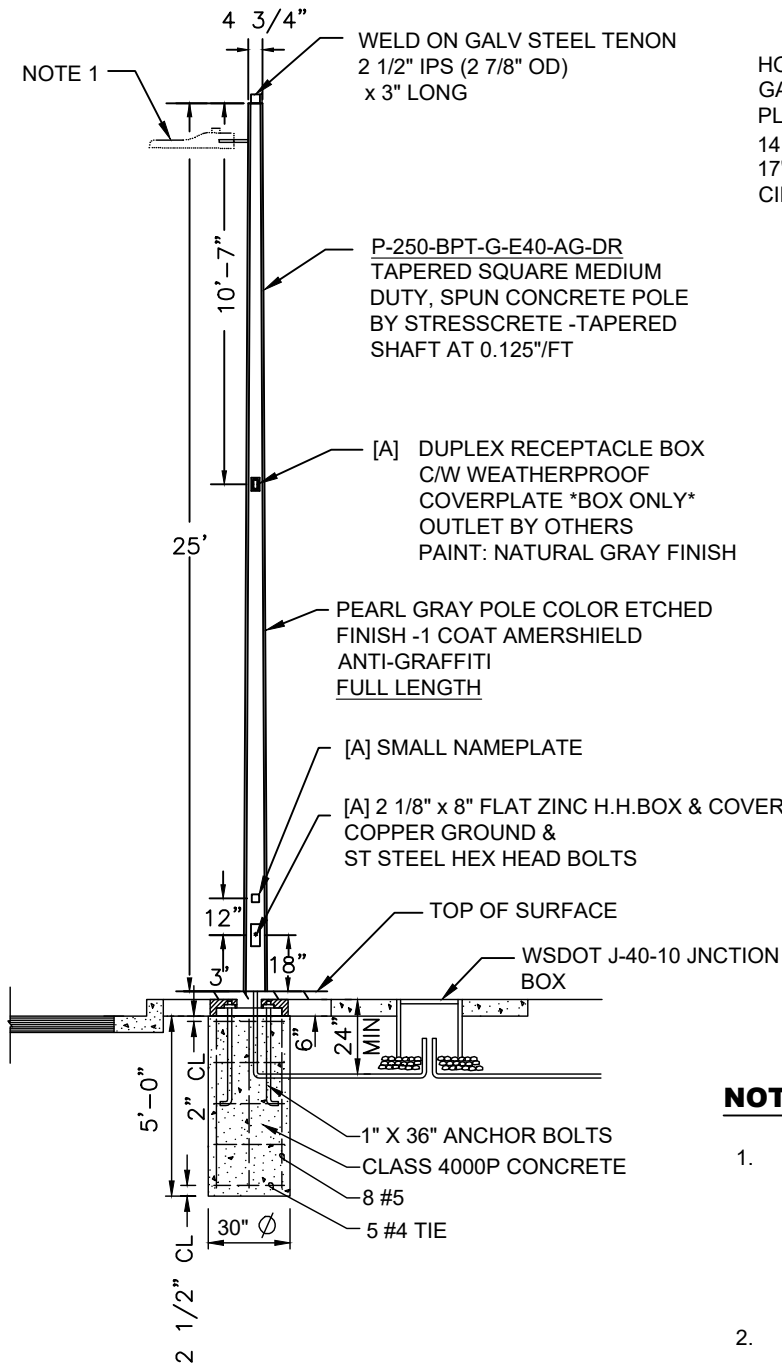
**CITY OF MERCER ISLAND
STANDARD DETAILS
ILLUMINATION**

**CONCRETE POLE LIGHTING
DETAIL DIRECT BURY**

01/22/20

NO SCALE

IL-1A



NOTES

1. EATON, STREETWORKS GAA GALLEON LED LUMINARIE 480V TYPE III WITH SPILL CONTROL, PHOTO CONTROL RECEPTACLE, AND MAST ARM ADAPTER CUSTOM COLOR BRONZE
2. HOUSE SIDE SHIELDS SHALL BE INSTALLED WHEN ABUTTING RESIDENTIAL STRUCTURES
3. EACH FIXTURE SHALL INCLUDE A PHOTOCELL OR GROUNDING CAP BASED ON EXISTING CIRCUIT CONFIGURATION.
4. A PULL STRING FURNISHED FROM BASEPLATE TO POLE TOP



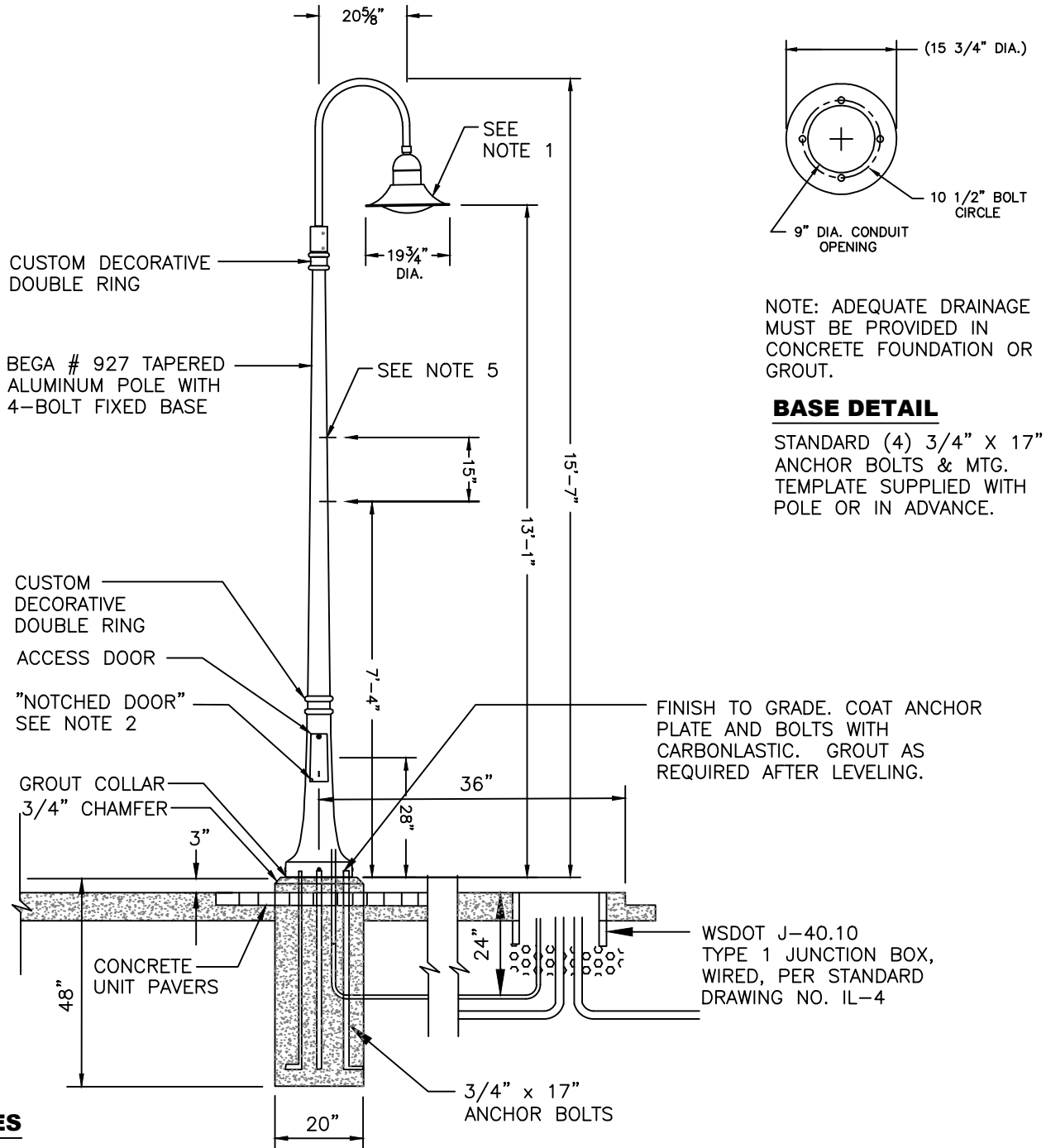
**CITY OF MERCER ISLAND
STANDARD DETAILS
ILLUMINATION**

**CONCRETE POLE LIGHTING
DETAIL W/FOUNDATION**

6/17/2022

NO SCALE

IL-1B



NOTE: ADEQUATE DRAINAGE MUST BE PROVIDED IN CONCRETE FOUNDATION OR GROUT.

BASE DETAIL


STANDARD (4) 3/4" X 17" ANCHOR BOLTS & MTG. TEMPLATE SUPPLIED WITH POLE OR IN ADVANCE.

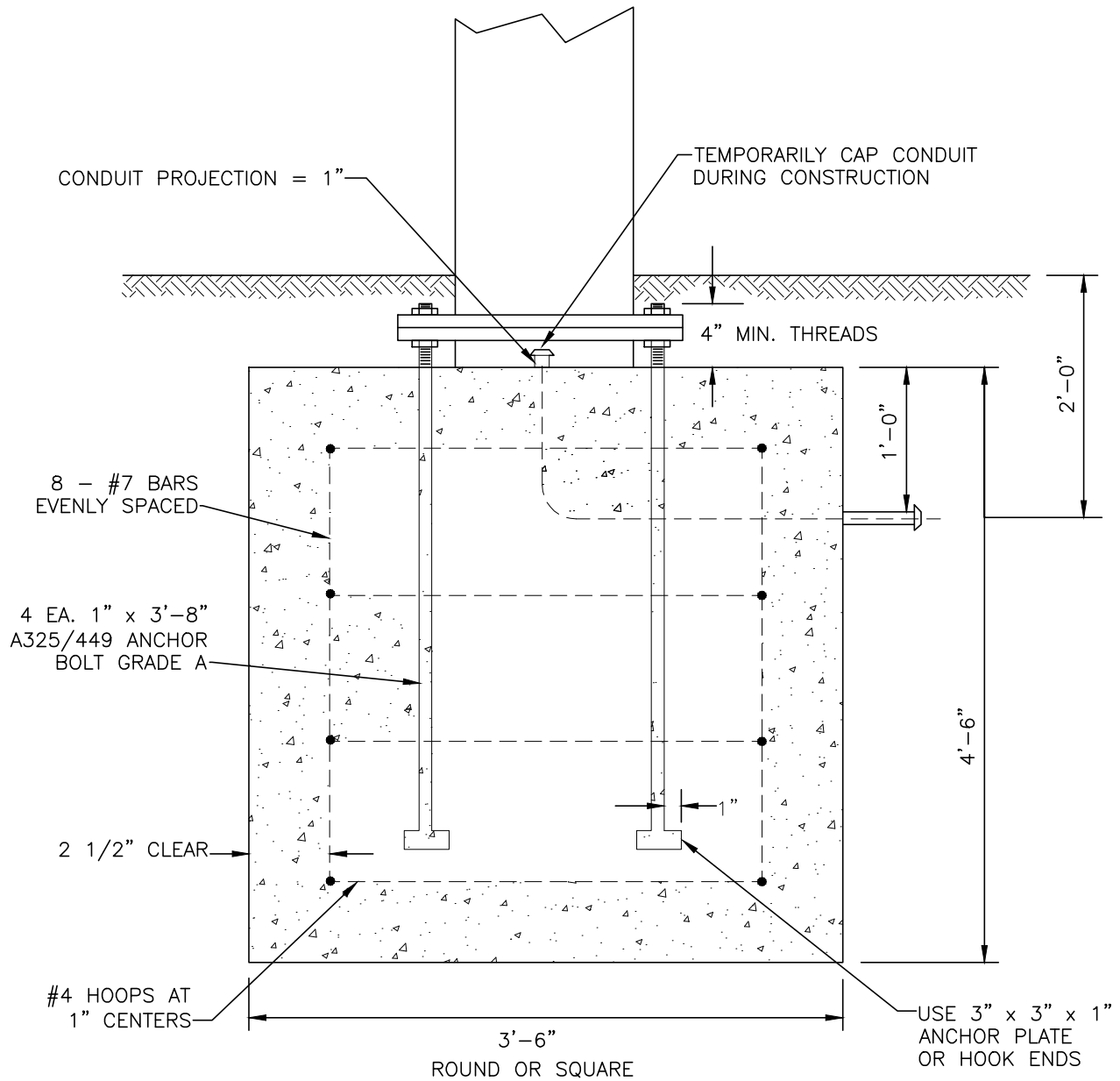
FINISH TO GRADE. COAT ANCHOR PLATE AND BOLTS WITH CARBONLASTIC. GROUT AS REQUIRED AFTER LEVELING.

WSDOT J-40.10 TYPE 1 JUNCTION BOX, WIRED, PER STANDARD DRAWING NO. IL-4

NOTES

- 1. BEGA LUMINAIRE #77910
120-277V ELECTRONIC (0-10V) DIMMING LED DRIVER.
15.8W 4000° LED ARRAY (19.0 TOTAL SYSTEM WATTS)
- 2. POLE SUPPLIED WITH GFIC BEHIND 'NOTCHED' ACCESS DOOR.
- 3. CUSTOM COLOR MATCH - PANTONE #5605U
POWDER COATED, MATTE FINISH. IF EXISTING POLE
REPAINTED, USE SHERWIN WILLIAM'S SHER-CRYL S/G
MATCH NUMBER 8156-52914
- 4. HAND HOLE SHALL FACE BUILDING
- 5. (2) 5/16" BLIND THREADED INSERTS 90°
TO ACCESS DOOR
- 6. THESE ARE CURRENTLY USED ONLY IN THE
TOWN CENTER.

	<p>CITY OF MERCER ISLAND</p> <p>STANDARD DETAILS</p> <p>ILLUMINATION</p>	
	<p>TOWN CENTER DECORATIVE LIGHTING DETAIL</p>	
11/27/19	NO SCALE	IL-2



NOTES

1. USE CLASS "B" CONCRETE. IN AREAS WHERE OLDER WALKWAY SURFACES EXIST, ADD LAMPBLACK TO CONCRETE MIX AT 2.5 POUNDS PER YARD PRIOR TO PLACEMENT. SURFACE MUST HAVE A NON-SKID SAND TEXTURED FINISH.
2. EXPOSED FOUNDATIONS SHALL HAVE A 1" CHAMFERED CORNERS AS APPROVED BY THE ENGINEER.



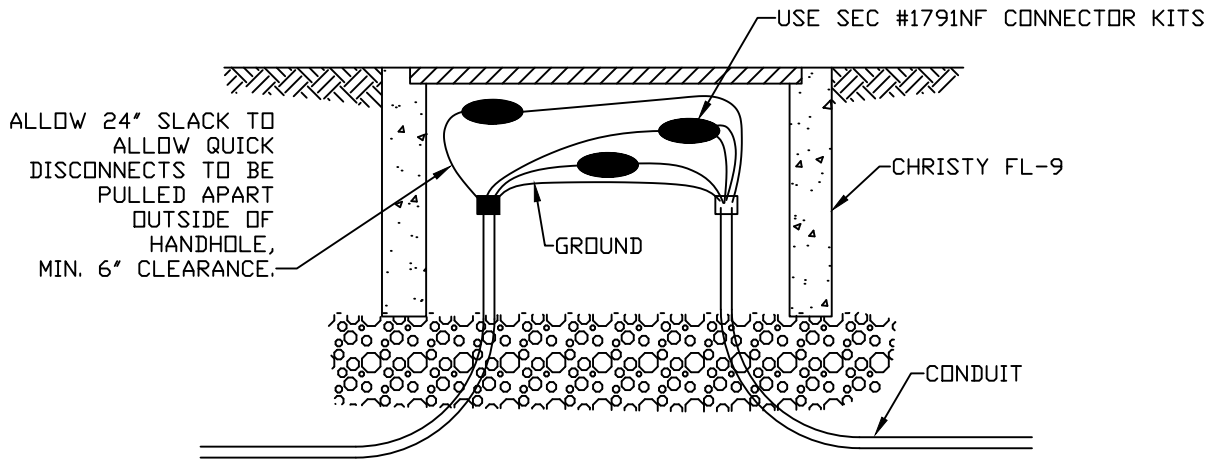
**CITY OF MERCER ISLAND
STANDARD DETAILS
ILLUMINATION**

FOUNDATION DETAIL

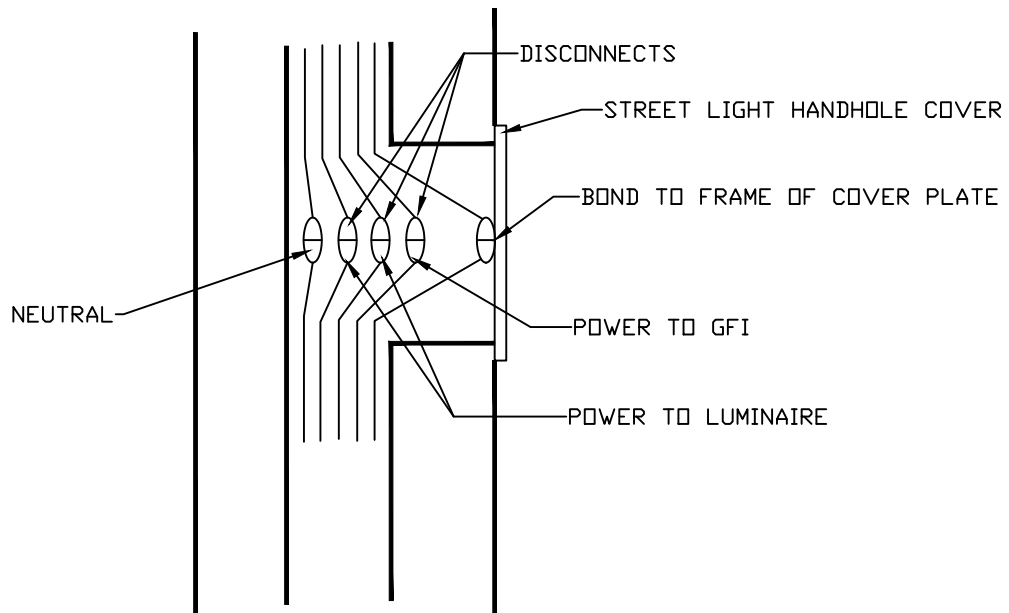
02/04/2015

NO SCALE


IL-3



JUNCTION BOX DETAIL



LIGHT STANDARD WIRING DETAIL

	CITY OF MERCER ISLAND STANDARD DETAILS ILLUMINATION	
	JUNCTION BOX DETAIL	
02/02/2000	NO SCALE	IL-4