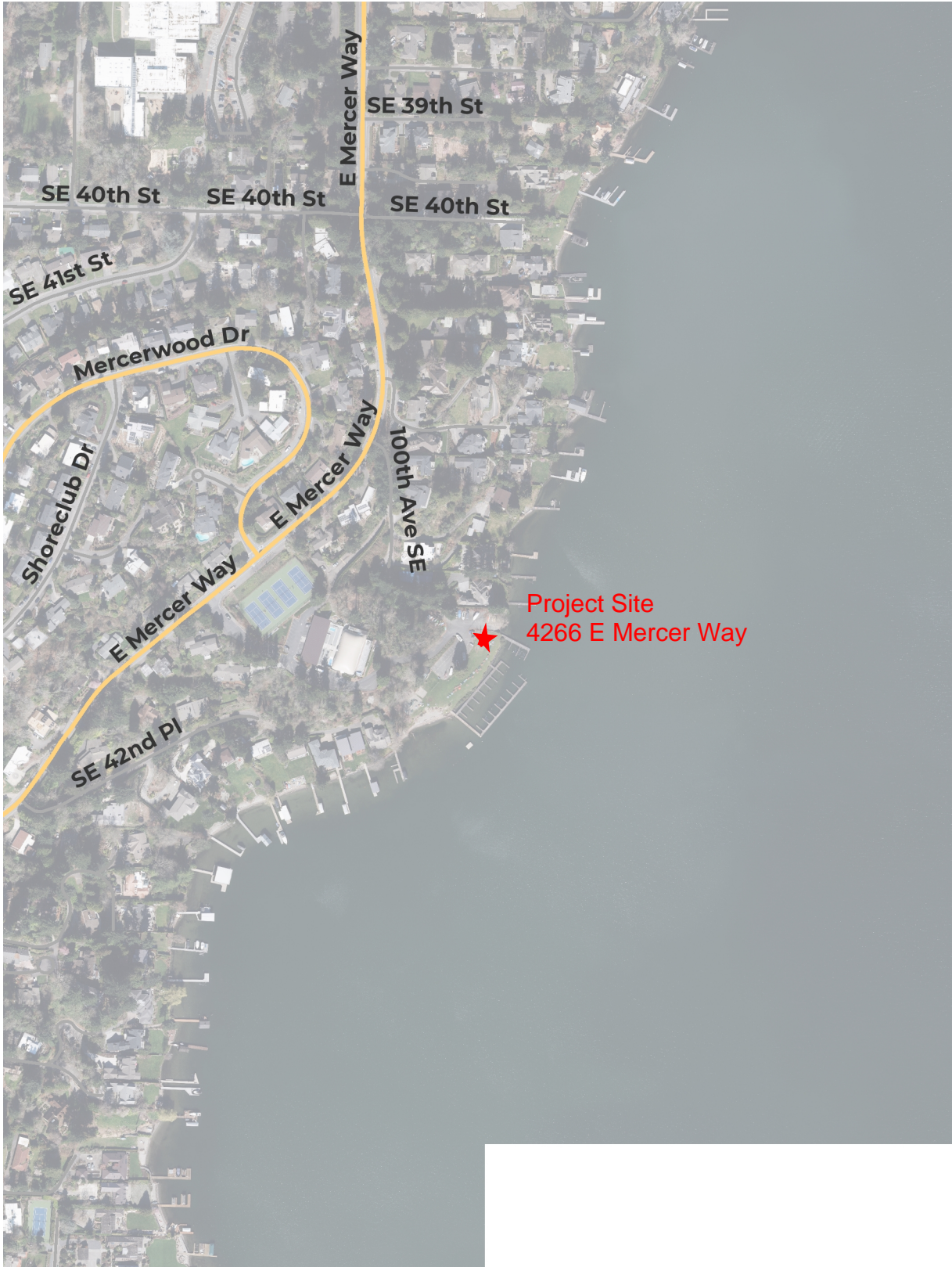




Special Catch Basin MH 40-2 Rehabilitation Project Vicinity Map



Legend

- Major Roads
- Street Centerline
- March 2020
- Red: Band_1
- Green: Band_2
- Blue: Band_3

Project Site
4266 E Mercer Way

1: 5,000



Disclaimer: These maps were developed by the City of Mercer Island and are intended to be a general purpose digital reference tool. These maps are not an accepted legal instrument for describing, establishing, recording or maintaining descriptions for property concerns or boundaries. The City makes no representation or warranty with respect to the accuracy or currency of these data sets, especially in regard to labeling of surveyed dimensions, or agreement with official sources such as records of survey, or mapped locations of features.

Notes

Project Location - City

ITB Attachments A-1

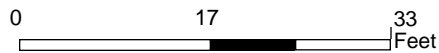
Special Catch Basin MH 40-2 - 4266 E. Mercer Way



Legend

- Sewer Pump Station
- Sewer Outfall
- Clean Out
- Sewer Manhole**
 - Other
 - Hydraulic Grade Manhole
 - Manhole
 - Overflow Manhole
 - Special Sewer Catch Basin
 - Grease Trap
- Sewer Main
- Pressurized Main
- Sewer Stub
- Sewer Service Line**
 - Mercer Island
 - Other
- Sewer Lining
- Sewer Video**
- Easements**
 - WATER EASEMENT
 - SEWER EASEMENT
 - STORM EASEMENT
 - ACCESS EASEMENT
 - GENERAL UTILITY EASEMENT
 - MULTIPLE USE EASEMENT
 - VEGETATION EASEMENT
 - OTHER EASEMENT
- Address**
 - Parcels
 - Docks
 - Shoreline

March 2020



1 inch =
33.333333333333
feet



Disclaimer: These maps were developed by the City of Mercer Island and are intended to be a general purpose digital reference tool. These maps are not an accepted legal instrument for describing, establishing, recording or maintaining descriptions for property concerns or boundaries. The City makes no representation or warranty with respect to the accuracy or currency of these data sets, especially in regard to labeling of surveyed dimensions, or agreement with official sources such as records of survey, or mapped locations of features.

Notes

**ITB Attachments
A-2**

Manhole 40-2 Photos



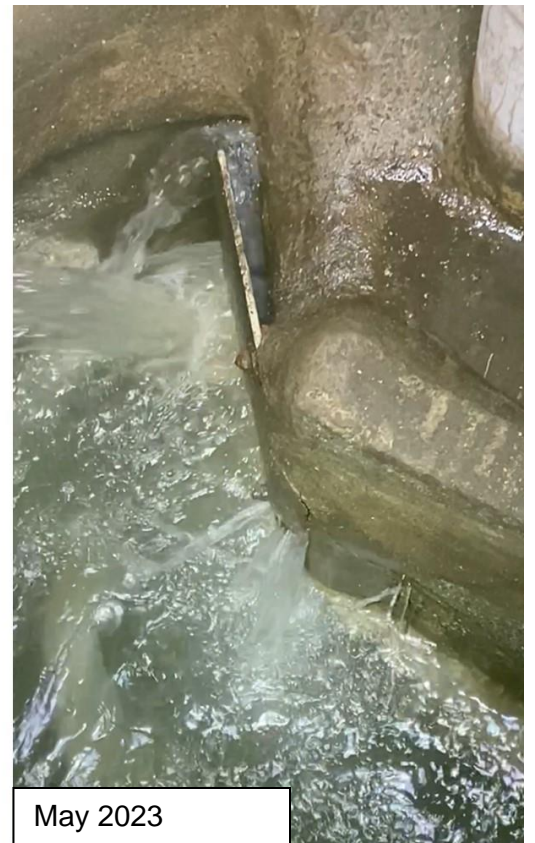
September 2016



January 2017 Repair



May 2023



May 2023

Manhole 40-2 Photos Continued



Manhole 40-2 Photos Continued



May 2023

Field Inspection Report

Source: Applegate, Daniel. (2018) P.E., *Mercer Island Special Sewer Catch Basin Evaluation Phase 2: Catch Basin Inspection Report*. HDR Engineering

Disclaimer: This report is 5 years old and is intended to provide manhole dimensions and orientation of inverts only.

MERCER ISLAND SPECIAL SEWER CATCH BASIN FIELD INVESTIGATION FORM

CATCH BASIN NAME: 40-2 DATE: 8/18
 DRAINAGE BASIN (PS): PS 25

PHOTOS TAKEN:

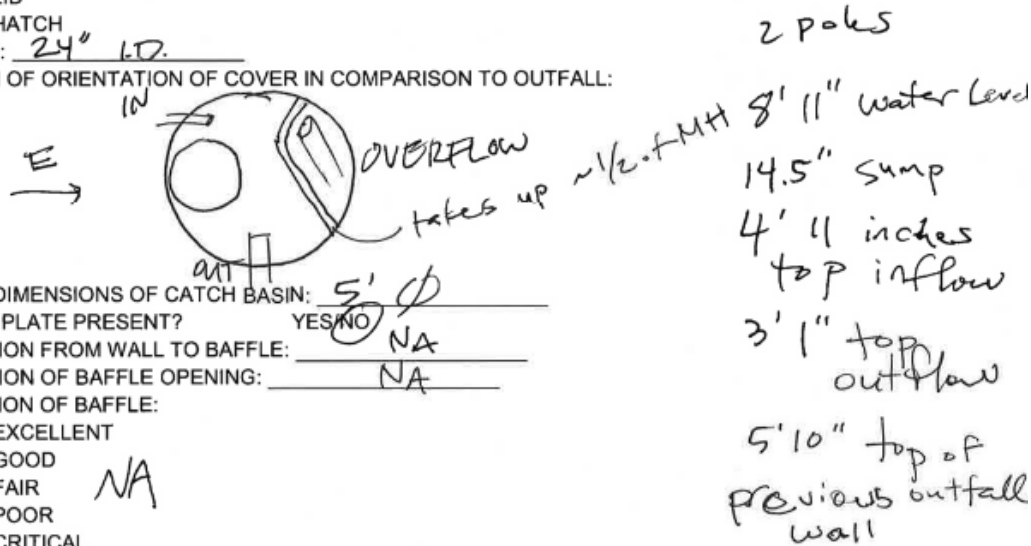
- R.O.W. ACCESS
- TOP OF C.B.
- INFLOW DETAIL
- ACCESSIBLE ROUTE N/A (IN ROAD)
- INSIDE OF C.B.
- OUTFLOW/BAFFLE DETAIL

TYPE OF COVER:

- LID
- HATCH

SIZE: 24" LD.

SKETCH OF ORIENTATION OF COVER IN COMPARISON TO OUTFALL:



INSIDE DIMENSIONS OF CATCH BASIN: 5' 0"

BAFFLE PLATE PRESENT? YES/NO NA

DIMENSION FROM WALL TO BAFFLE: NA

DIMENSION OF BAFFLE OPENING: NA

CONDITION OF BAFFLE:

- EXCELLENT
- GOOD
- FAIR NA
- POOR
- CRITICAL

DEPTH FROM TOP OF C.B. TO OUTFLOW INVERT: _____

DEPTH OF SUMP BELOW OUTFALL INVERT: _____

WATER LEVEL IN STRUCTURE: _____

COMMENTS/OBSERVATIONS:

previous outflow line, there is a bend on new outflow not a lot of room to ~~work~~ shoreline. High velocity flows coming in

CITY COMMENTS/OBSERVATIONS: _____

TO BE PROVIDED BY CITY IF AVAILABLE:

UPSTREAM PIPE SIZE: _____ MATERIAL: _____ SLOPE: _____

DOWNSTREAM PIPE SIZE: _____ MATERIAL: _____

AVERAGE DRY WEATHER FLOWS: _____

PEAK STORM FLOWS: _____

Notes:

- 1 Length of Catch Basin risers approximated from visual inspection at top of Catch Basin.
- 2 Up to three poles connected together were used to make measurements in the field. One pole measured at a length of 6'-0", two poles measured at a length of 11'-4", and three poles measured at a length of 16'-8".
- 3 Diameters shown based on GIS data obtained from City of Mercer Island Information & Geographic Services. Pipe thickness to be 2-inches for all diameter pipes.
- 4 Water surface measured from laser tape measure attached to level across Catch Basin rim opening.
- 5 Baffle measurements approximated from visual inspection at top of Catch Basin.