



CITY OF MERCER ISLAND

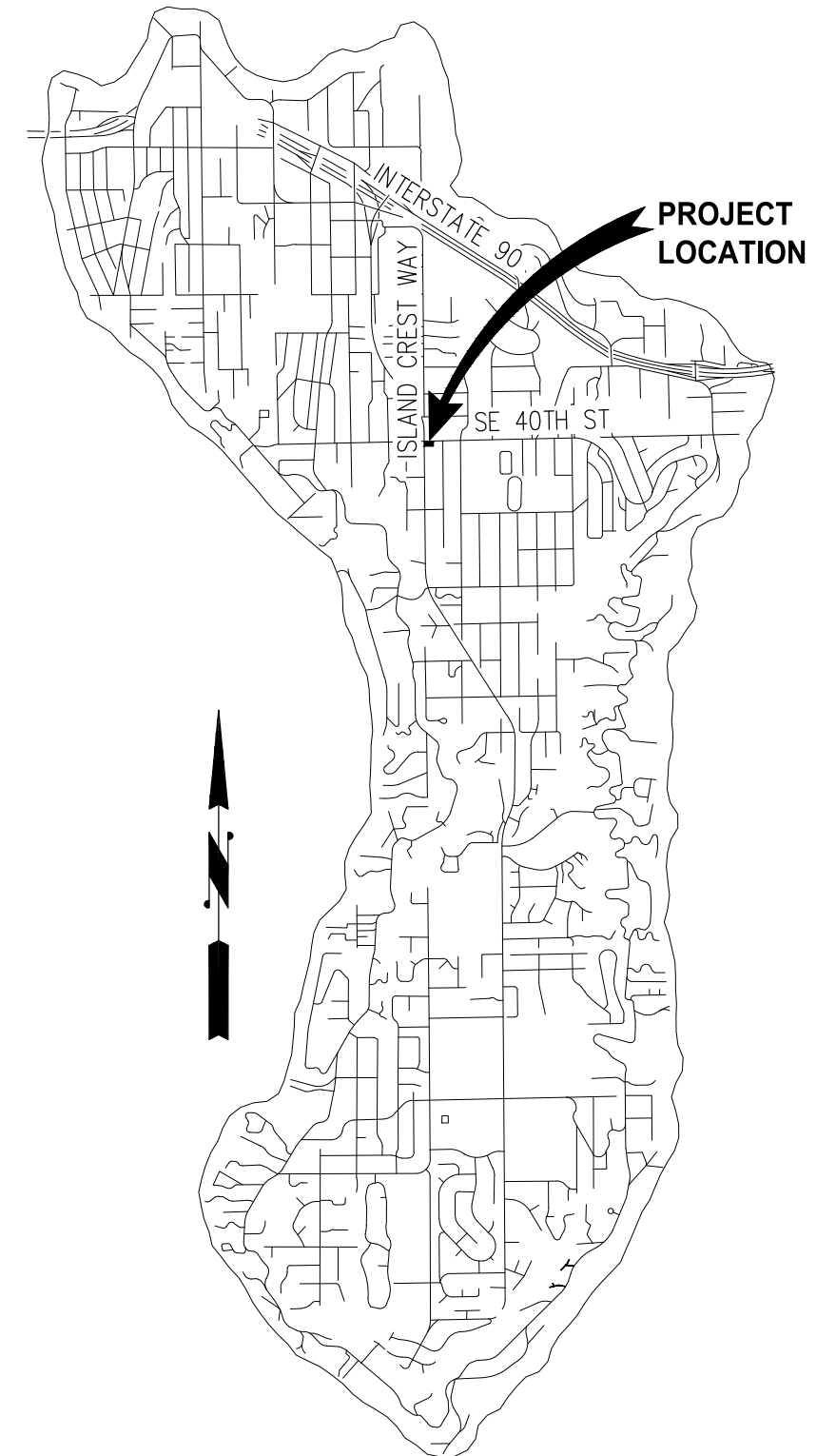
4004 ICW PEDESTRIAN CORNER IMPROVEMENTS

JUNE 2023

CITY PROJECT NUMBER: SP0122

SCHEDULE OF DRAWINGS

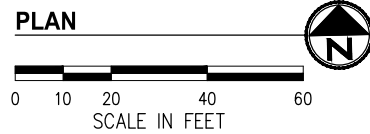
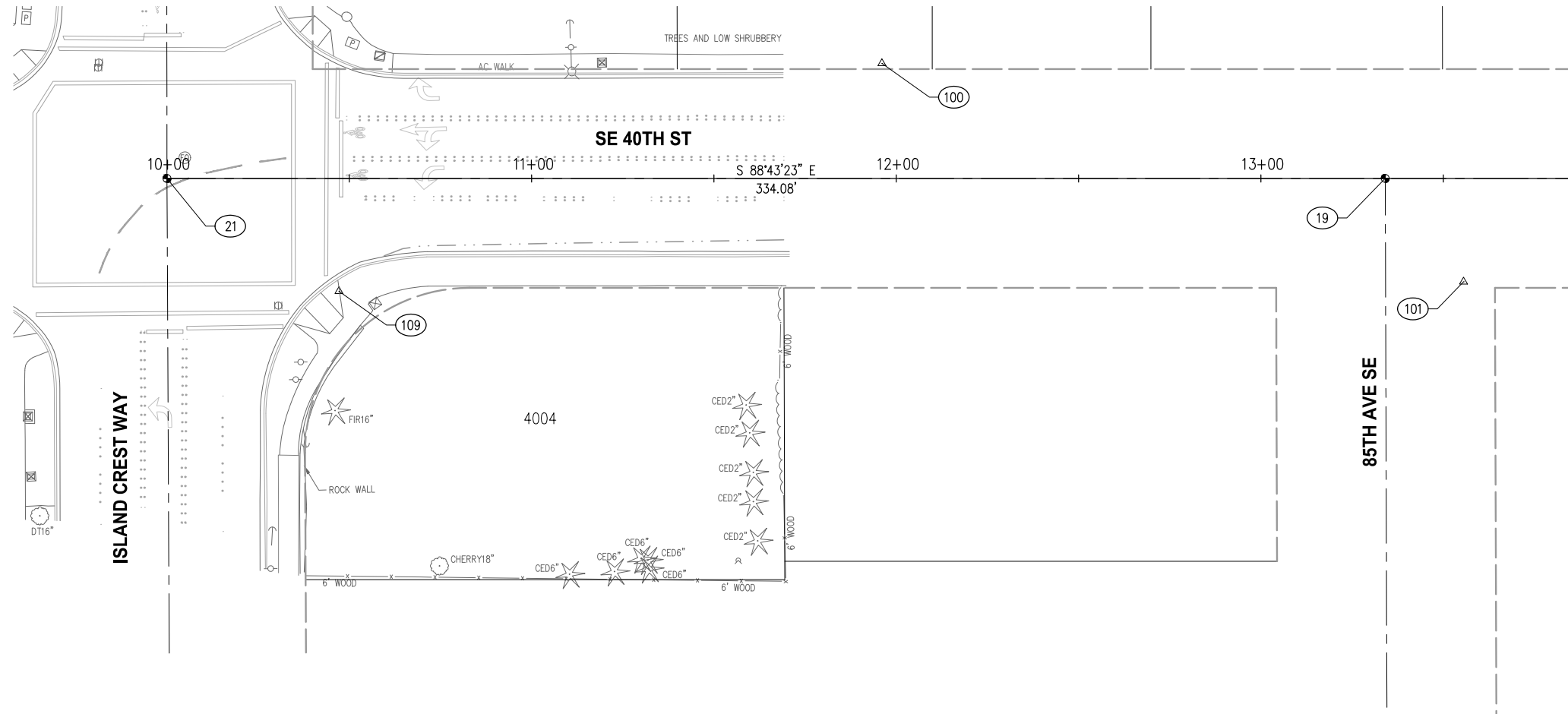
<u>SHEET</u>	<u>DRAWINGS</u>
1	COVER SHEET
2	ALIGNMENT & SURVEY CONTROL PLAN
3	SITE PREPARATION & TESC PLAN & DETAILS
4-5	SITE PLAN & DETAILS
6	LANDSCAPE PLAN
7	LANDSCAPE SCHEDULE & DETAILS
8	IRRIGATION PLAN
9	IRRIGATION SCHEDULE & DETAILS



CALL 2 DAYS
BEFORE YOU DIG
1-800-424-5555

BID
DOCUMENTS

K:\PROJECTS\MERCER IS\9MER010300- 4004 ICW Pedestrian Corner Improvement\DESIGN\Drawings\Contract\9MER010300SRVCTRL.dwg 6/6/2023 2:19 PM



SURVEY NOTES

- THE LOCATIONS OF EXISTING UNDERGROUND UTILITY SYSTEMS, AS SHOWN HEREON, ARE TAKEN FROM UTILITY LOCATE PAINT MARKS OR AS-BUILT PLANS AND ARE SHOWN IN AN APPROXIMATE WAY ONLY.

THE CONTRACTOR SHALL DETERMINE THE EXACT LOCATION OF ALL EXISTING UTILITIES BEFORE COMMENCING WORK, AND AGREES TO BE FULLY RESPONSIBLE FOR ANY AND ALL DAMAGES WHICH MIGHT BE OCCASIONED BY THE CONTRACTOR'S FAILURE TO EXACTLY LOCATE AND PRESERVE ANY AND ALL UNDERGROUND UTILITIES. ALL LOCATOR SERVICES SHOULD BE CONTACTED PRIOR TO ANY CONSTRUCTION OR SUBSURFACE EXPLORATION. CALL 1-800-424-5555.
- FIELD SURVEY: KPG, FEBRUARY, 2018, FROM 100' EAST OF THE SE 40TH ST/88TH AVE SE INTERSECTION, WEST THROUGH THE ISLAND CREST WAY INTERSECTION.
THE REMAINING EASTERLY PORTION OF THE SURVEY WAS PERFORMED BY PERTEET IN 2015. PERTEET'S DATA WAS TAKEN DIRECTLY FROM THE DRAWING "20150279 TOPO", POINT DESCRIPTIONS AND LINE LAYERS WERE CONVERTED TO KPG STANDARDS, AND POINT NUMBERS WERE INCREMENTED BY +50,000. A TRANSLATION WAS ALSO APPLIED TO THE PERTEET DATA OF -0.19' N, -0.42' E, +0.15' ELEV.
- CONTOUR INTERVAL = 1 FOOT.
- STORM AND SEWER CONNECTIONS HAVE BEEN DRAWN FROM CENTER OF LID TO CENTER OF LID.
- THE LOCATIONS AND DIMENSIONS OF UNDERGROUND VAULTS HAVE NOT BEEN VERIFIED AND ARE APPROXIMATE.

HORIZONTAL DATUM

WASHINGTON STATE PLANE COORDINATE SYSTEM, NORTH ZONE, NAD 83/91.

VERTICAL DATUM

NAVD 88.

CONTROL POINT LIST

PT #	DESCRIPTION	NORTHING	EASTING	ELEVATION
19	MIC	212695.28	1296779.59	316.28'
21	MIC	212702.69	1296445.59	293.09'
100	PK	212729.90	1296642.29	308.04'
101	PK	212666.44	1296800.42	318.98'
102	PK	212664.27	1297062.16	329.40'
109	PK	212670.74	1296492.04	296.73'

NO.	DATE	BY	APPR.	REVISIONS

Approved By

ENGINEERING MANAGER	DATE	9MER010300SRVCTRL.dwg
PROJECT MANAGER	DATE	FILENAME
PROJECT ENGINEER	DATE	BMC 6/2023
		DESIGNED BY DATE
		VS 6/2023
		DRAWN BY DATE
		BMC 6/2023
		CHECKED BY DATE



KPG
PSOMAS

Seattle
3131 Elliott Avenue, Suite 400
Seattle, WA 98121 206.286.1640
Tacoma | Wenatchee | KPG.com

BID DOCUMENT

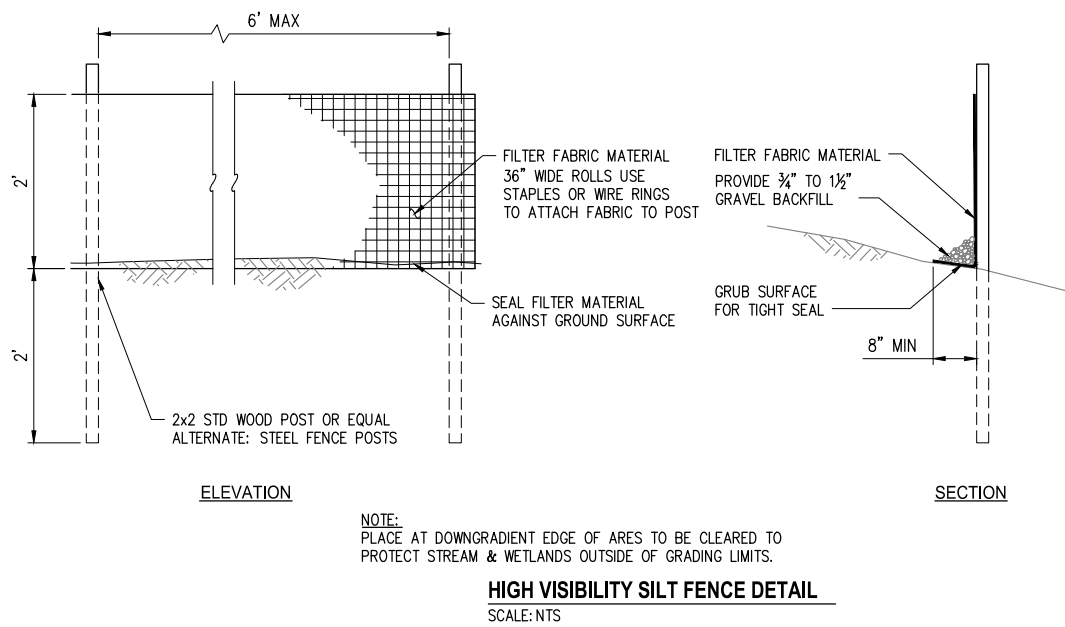
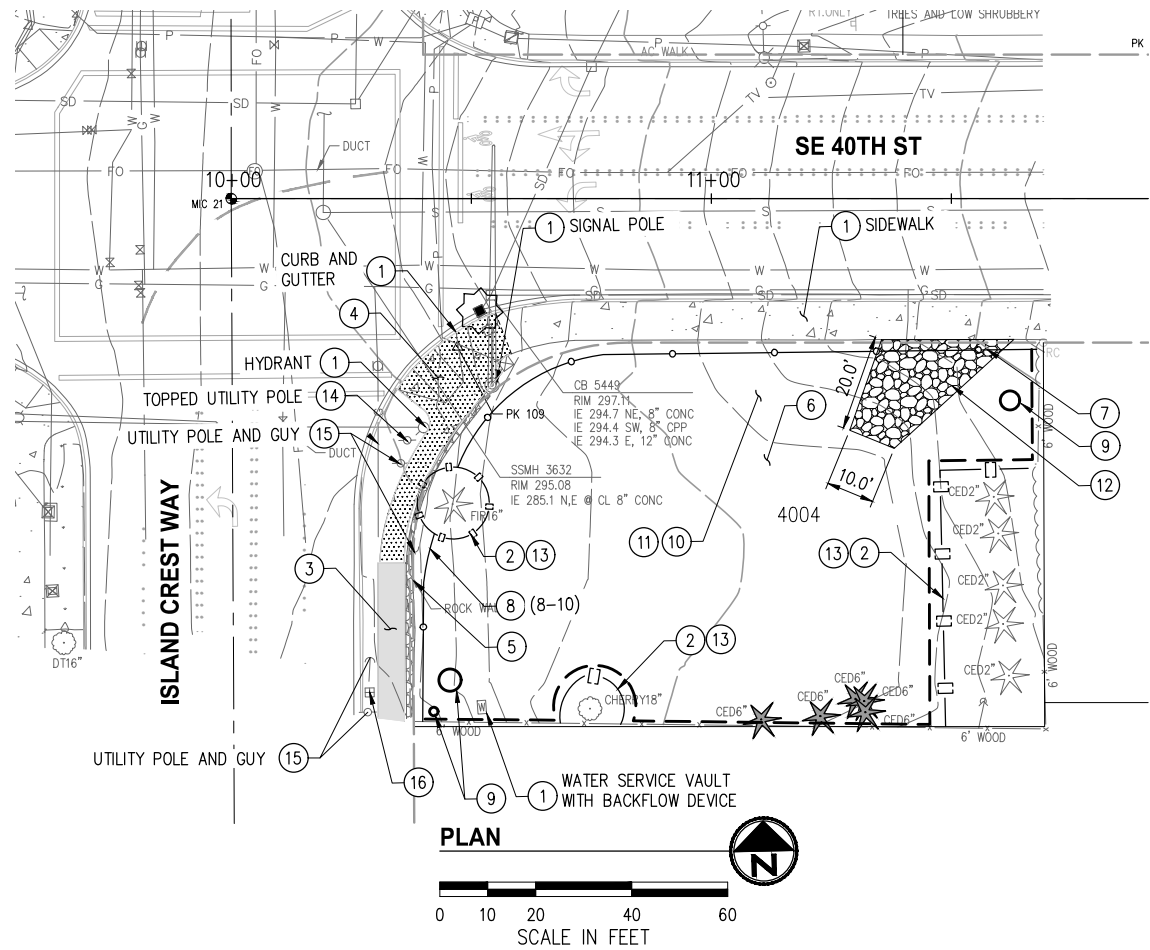


CITY OF MERCER ISLAND
4004 ICW PEDESTRIAN CORNER IMPROVEMENTS

ALIGNMENT & SURVEY CONTROL PLAN

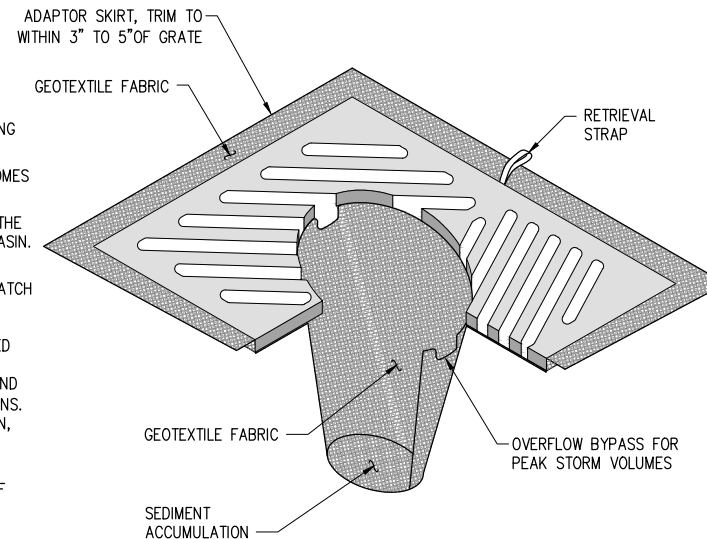
KPG PROJECT No. 9MER010300 SHT 2 OF 9

K:\PROJECTS\MERCER IS\9MER010300SP\Drawings\Contract\9MER010300SP.dwg 6/6/2023 2:19 PM



NOTES:

1. INSERT SHALL BE INSTALLED PRIOR TO CLEARING AND GRADING ACTIVITY, OR UPON PLACEMENT OF A NEW CATCH BASIN.
2. SEDIMENT SHALL BE REMOVED FROM THE UNIT WHEN IT BECOMES HALF FULL.
3. SEDIMENT REMOVAL SHALL BE ACCOMPLISHED BY REMOVING THE INSERT, EMPTYING, AND RE-INSERTING IT INTO THE CATCH BASIN.
4. CATCH BASIN INSERTS SHALL BE USED FOR TEMPORARY STORMWATER TREATMENT DURING CONSTRUCTION. EXISTING CATCH BASINS AND NEWLY INSTALLED CATCH BASINS SHALL BE EQUIPPED WITH INSERTS FOR SEDIMENT CONTROL DURING CONSTRUCTION. INSERTS MAY BE REMOVED AND RE-INSTALLED ONLY IF THE INSERT REMAINS INTACT AND IN FULL WORKING CONDITION, SUBJECT TO THE APPROVAL OF THE ENGINEER, AND IN ACCORDANCE WITH THE MANUFACTURER'S RECOMMENDATIONS. CATCH BASIN INSERTS REQUIRE AT LEAST WEEKLY INSPECTION, AND MAINTENANCE IF NEEDED.
5. CATCH BASIN INSERTS DO NOT MEET SPILL CONTAINMENT REQUIREMENTS AND CANNOT BE USED AS SUCH. METHODS OF POTENTIAL SPILL-CONTAINMENT SHALL BE ADDRESSED IN A TEMPORARY WATER POLLUTION/EROSION CONTROL PLAN.



GENERAL NOTES

1. CONTRACTOR SHALL OBTAIN ALL NECESSARY PERMITS REQUIRED PER STANDARD SPECIFICATION 1-07.6, CITY CODES, AND THESE PLANS WHICH INCLUDES NOT LIMITED TO ROW USE PERMIT, IRRIGATION PERMIT, AND PLUMBING PERMIT TO CONNECT TO WATER SERVICE. ROW USE PERMIT AND APPROVED VEHICLE AND PEDESTRIAN TRAFFIC CONTROL PLANS SHALL BE IN PLACE PRIOR TO MOBILIZATION AND GRADING.
2. CONTRACTOR SHALL SUBMIT PEDESTRIAN TRAFFIC CONTROL PLANS AND MAINTAIN TEMPORARY WALKWAY FOR DURATION OF PROJECT UNTIL FINAL IMPROVEMENTS INSTALLED.
3. CONTRACTOR SHALL ENSURE NO SITE RUNOFF OR SEDIMENT ENTERS THE NEARBY DRAINAGE SYSTEM.
4. ALL WORK SHALL BE CONTAINED WITHIN PROPERTY LINE AND LIMITS SHOWN.
5. CONTRACTOR SHALL PHASE WORK TO MINIMIZE TRAFFIC DISRUPTION ON ISLAND CREST WAY.
6. SEE SHEET 6 FOR TREE PROTECTION DETAIL AND NOTES.

CONSTRUCTION NOTES

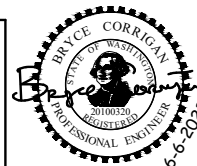
1. PROTECT.
2. INSTALL TREE PROTECTION FENCING PER TREE PROTECTION DETAIL, SHEET 6.
3. REMOVE HMA WALKWAY.
4. REMOVE CEMENT CONC. SIDEWALK.
5. REMOVE AND STOCKPILE LANDSCAPE ROCKS ON SITE FOR RE-USE.
6. REGRADE SITE PER SITE PLAN, SHEET 4.
7. INSTALL HIGH VISIBILITY SILT FENCE PER DETAIL, THIS SHEET.
8. REMOVE FENCE POSTS. NOT SHOWN ON SURVEY.
9. REMOVE STUMP. NOT SHOWN ON SURVEY.
10. REMOVE GRAVEL AND STOCKPILE ON SITE FOR RE-USE AS BASE MATERIAL FOR PROPOSED IMPROVEMENTS.
11. REMOVE AND HAUL FOR DISPOSAL ANY EXISTING UNDERLYING PAVEMENT BELOW GRAVEL.
12. INSTALL CONSTRUCTION ENTRANCE PER WSDOT STD SPECIFICATION 8-01.3(7), WSDOT STD PLAN I-80.10, AND PER DIMENSIONS SHOWN ON PLAN.
13. INSTALL 4" DEPTH OF BARK OR WOOD CHIP MULCH OVER UNDISTURBED GROUND WITHIN TREE PROTECTION FENCING.
14. EXISTING UTILITY POLE. TO BE REMOVED BY PSE.
15. PROTECT UTILITY POLE AND GUY WIRE. ADJUST AS NECESSARY FOR PROPOSED GRADES/EDGE OF PAVEMENT. COORDINATE WITH CITY AND PSE POWER.
16. EXISTING WATER METER SERVICE TO BE RELOCATED BY CITY WATER. COORDINATE AT LEAST 3-WEEKS IN ADVANCE OF WORK. SEE IRRIGATION PLAN SHEET, 8.

LEGEND

- REMOVE CEMENT CONC.
- REMOVE PAVEMENT
- CONSTRUCTION ENTRANCE
- INLET PROTECTION
- REMOVE CONIFEROUS TREE
- CLEARING LIMITS
- SAWCUT LINE
- HIGH VISIBILITY SILT FENCE
- TREE PROTECTION FENCING

NO.	DATE	BY	APPR.	REVISIONS

Approved By		9MER010300SP.dwg
ENGINEERING MANAGER	DATE	FILENAME BMC DESIGNED BY DATE BMC 6/2/2023
PROJECT MANAGER	DATE	BMC DRAWN BY DATE BMC 6/2/2023
PROJECT ENGINEER	DATE	BMC CHECKED BY DATE



KPG
PSOMAS

Seattle
3131 Elliott Avenue, Suite 400
Seattle, WA 98121 206.286.1640
Tacoma | Wenatchee | KPG.com

BID DOCUMENT



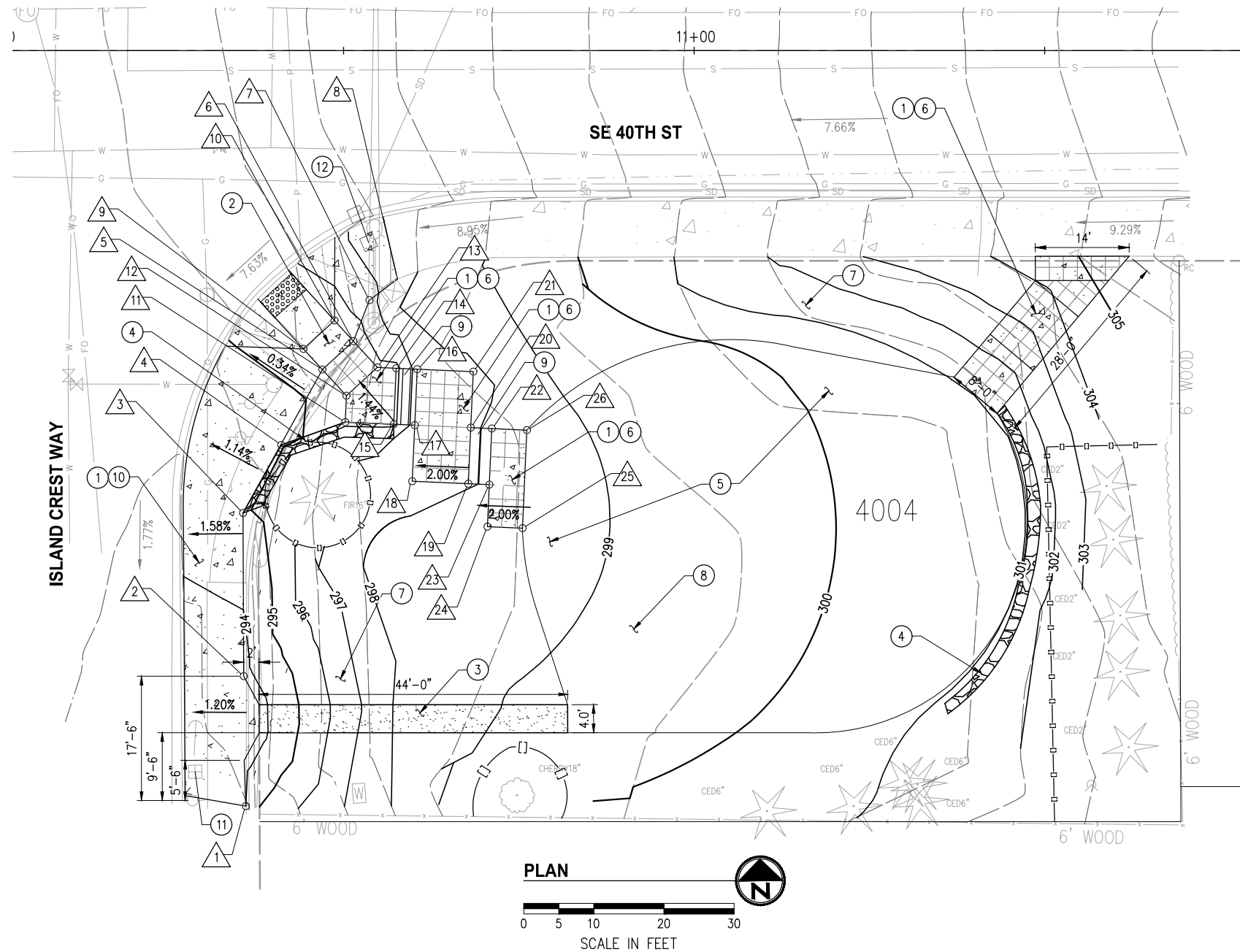
CITY OF MERCER ISLAND
4004 ICW PEDESTRIAN CORNER IMPROVEMENTS

SITE PREPARATION & TESC PLAN

KPG PROJECT No. 9MER010300 SHT 3 OF 9

K:\PROJECTS\MERCER IS\9MER010300\Drawings\Design\Corner Improvement\DESIGN\Drawings\Contract\9MER010300GRAD.dwg 6/16/2023 2:20 PM

CURB LAYOUT POINTS				
NUMBER	STATION	OFFSET	APPROX ELEV	DESCRIPTION
1	10+36.06	107.79' RT	294.0	BACK OF WALK
2	10+35.75	89.25' RT	293.7	BACK OF WALK
3	10+35.66	65.97' RT	294.4	BACK OF WALK
4	10+41.12	56.25' RT	294.6	BACK OF WALK
5	10+46.97	45.51' RT	295.2	BACK OF WALK
6	10+51.40	41.46' RT	295.4	BACK OF WALK
7	10+53.68	35.61' RT	296.7	BACK OF WALK
8	10+57.68	32.60' RT	297.7	BACK OF WALK
9	10+44.27	42.56' RT	295.3	TOP RAMP
10	10+48.70	38.51' RT	295.4	TOP RAMP
11	10+50.23	53.00' RT	295.7	LANDING
12	10+50.39	49.25' RT	295.6	LANDING
13	10+54.82	45.20' RT	295.7	LANDING
14	10+57.50	45.32' RT	295.8	BOTTOM STEP
15	10+57.15	53.31' RT	295.8	BOTTOM STEP
16	10+60.50	45.45' RT	297.4	LANDING
17	10+60.15	53.44' RT	297.4	LANDING
18	10+59.79	61.44' RT	297.4	LANDING
19	10+67.78	61.79' RT	297.5	BOTTOM STEP
20	10+68.14	53.80' RT	297.5	BOTTOM STEP
21	10+68.49	45.81' RT	297.5	LANDING
22	10+71.13	53.93' RT	298.6	LANDING
23	10+70.78	61.92' RT	298.6	LANDING
24	10+70.51	67.92' RT	298.6	LANDING
25	10+75.51	68.14' RT	298.7	LANDING
26	10+76.13	54.15' RT	298.7	LANDING



GENERAL NOTES

- CONTRACTOR SHALL OBTAIN ALL NECESSARY PERMITS REQUIRED PER STANDARD SPECIFICATION 1-07.6, CITY CODES, AND THESE PLANS WHICH INCLUDES NOT LIMITED TO ROW USE PERMIT, IRRIGATION PERMIT, AND PLUMBING PERMIT TO CONNECT TO WATER SERVICE. ROW USE PERMIT AND APPROVED VEHICLE AND PEDESTRIAN TRAFFIC CONTROL PLANS SHALL BE IN PLACE PRIOR TO MOBILIZATION AND GRADING.
- CONTRACTOR SHALL STAKE LAYOUT POINTS FOR SIDEWALK, TIMBER STEPS, GRAVEL PATH AND LAWN EDGE FOR ENGINEER'S REVIEW PRIOR TO SIDEWALK INSTALLATION.

CONSTRUCTION NOTES

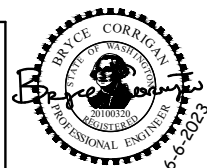
- INSTALL CEMENT CONC. SIDEWALK PER DETAIL, SHEET 5.
- CONTRACTOR SHALL INSTALL FORMWORK AND CONSTRUCT LEVEL LANDING FOR PEDESTRIAN PUSH BUTTON PRIOR TO CONSTRUCTING REMAINING CEMENT CONC. SIDEWALK. CONTRACTOR SHALL NOTIFY ENGINEER 48 HOURS PRIOR TO CEMENT CONC. PLACEMENT TO CHECK LAYOUT, GRADES, AND FORMWORK OF LEVEL LANDING.
- INSTALL GRAVEL PATH FROM STOCKPILED GRAVEL; INSTALL 3" DEPTH. SEE GRAVEL PATH DETAIL, SHEET 5.
- INSTALL ROCK WALL FROM STOCKPILED ROCKERY. SEE ROCK WALL DETAIL, SHEET 5.
- REGRADE SITE TO CONTOURS SHOWN, THIS SHEET.
- SCORING ON CEMENT CONC. SIDEWALK PER DETAIL, SHEET 5.
- PLANTING AREA, PER LANDSCAPE PLAN, SHEET 6.
- LAWN AREA, PER LANDSCAPE PLAN, SHEET 6.
- INSTALL TIMBER STEPS PER DETAIL, SHEET 5. SEE LAYOUT POINTS, THIS SHEET FOR ELEVATIONS AT LANDINGS.
- SCORING ON CEMENT CONC. SIDEWALK PER WSDOT STD PLAN F-30.10.
- EXISTING WATER METER SERVICE TO BE RELOCATED BY CITY WATER. COORDINATE AT LEAST 3-WEEKS IN ADVANCE OF WORK. SEE IRRIGATION PLAN SHEET, 8.
- ADJUST VAULT TO GRADE.

LEGEND

- CEMENT CONC. SIDEWALK
- GRAVEL
- DETECTABLE WARNING SURFACE
- ROCK WALL
- TEMPORARY TREE PROTECTION FENCING

NO.	DATE	BY	APPR.	REVISIONS

Approved By		9MER010300GRAD.dwg
ENGINEERING MANAGER	DATE	FILENAME BMC DESIGNED BY DATE 6/2023
PROJECT MANAGER	DATE	BMC DRAWN BY DATE 6/2023
PROJECT ENGINEER	DATE	BMC CHECKED BY DATE 6-6-2023



KPG
PSOMAS
Seattle
3131 Elliott Avenue, Suite 400
Seattle, WA 98121 206.286.1640
Tacoma | Wenatchee | KPG.com

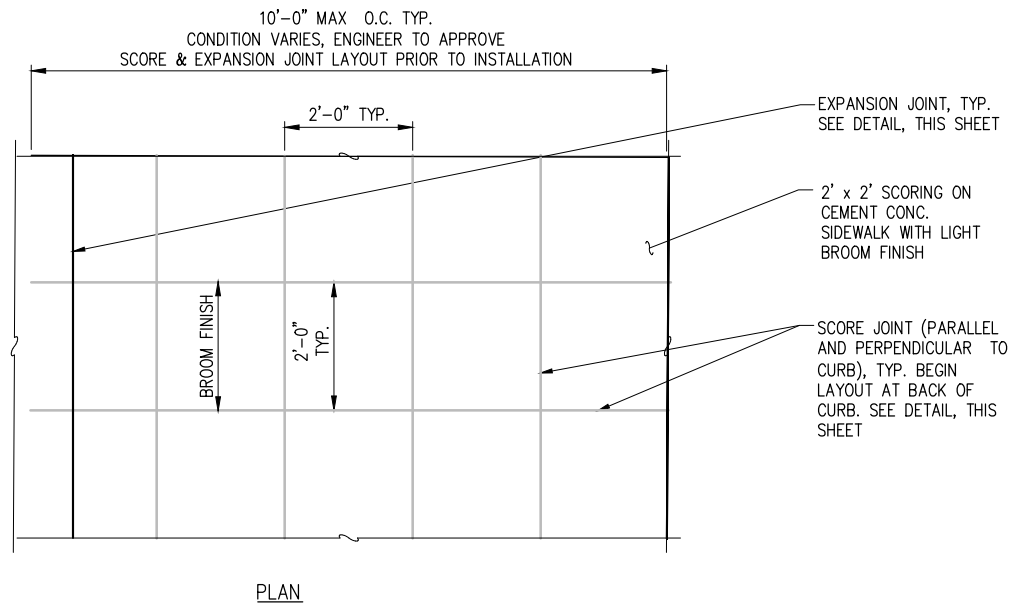
BID DOCUMENT



CITY OF MERCER ISLAND
4004 ICW PEDESTRIAN CORNER
IMPROVEMENTS

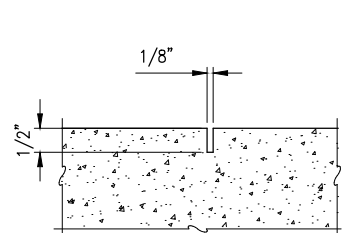
SITE PLAN	
KPG PROJECT No. 9MER010300	SHT 4 OF 9

K:\PROJECTS\MERCER IS\9MER010300-4004 ICW Pedestrian Corner Improvement\DESIGN\Drawings\Contract\9MER010300DET-GRAD.dwg 6/6/2023 2:20 PM

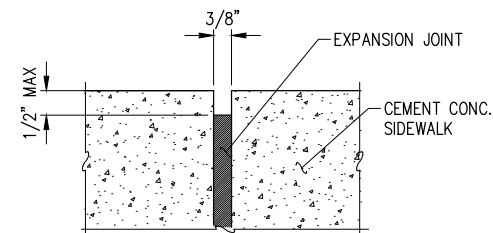


SCORING ON CEMENT CONC. SIDEWALK LAYOUT DETAIL

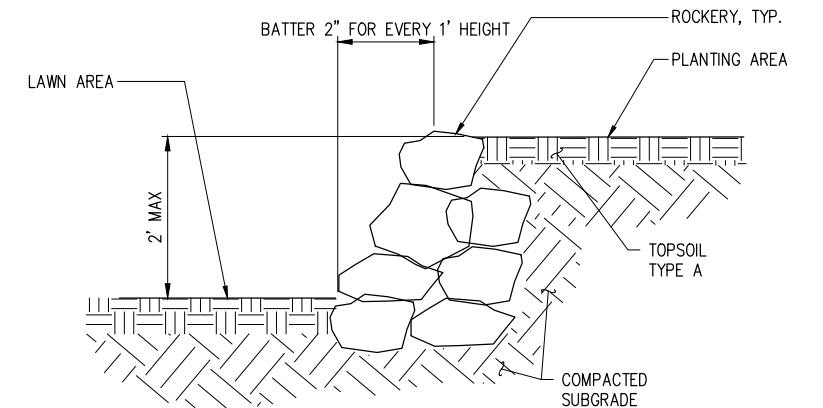
NTS



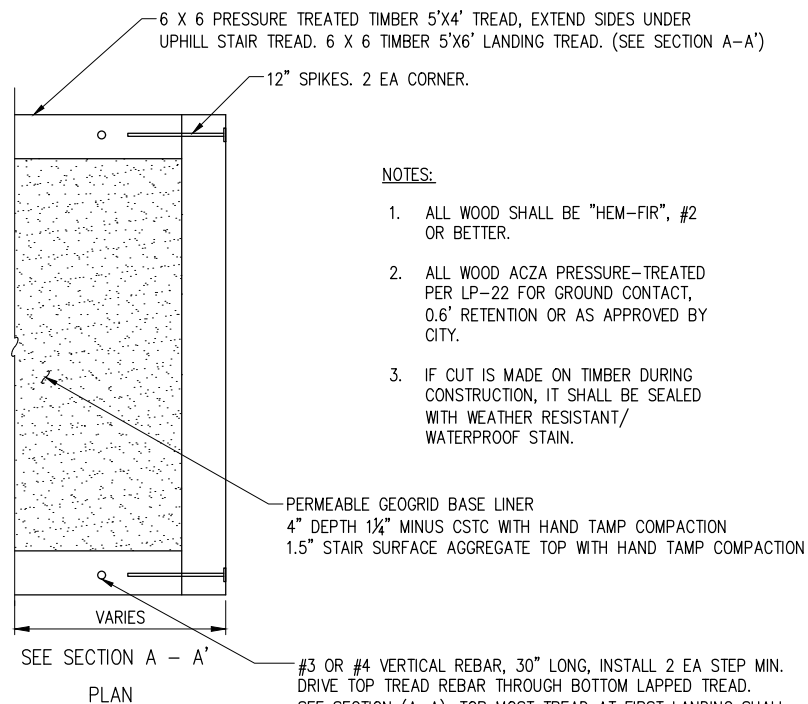
SECTION
SCORE JOINT DETAIL
NTS



SECTION
EXPANSION JOINT DETAIL
NTS



SECTION
ROCK WALL DETAIL
NTS

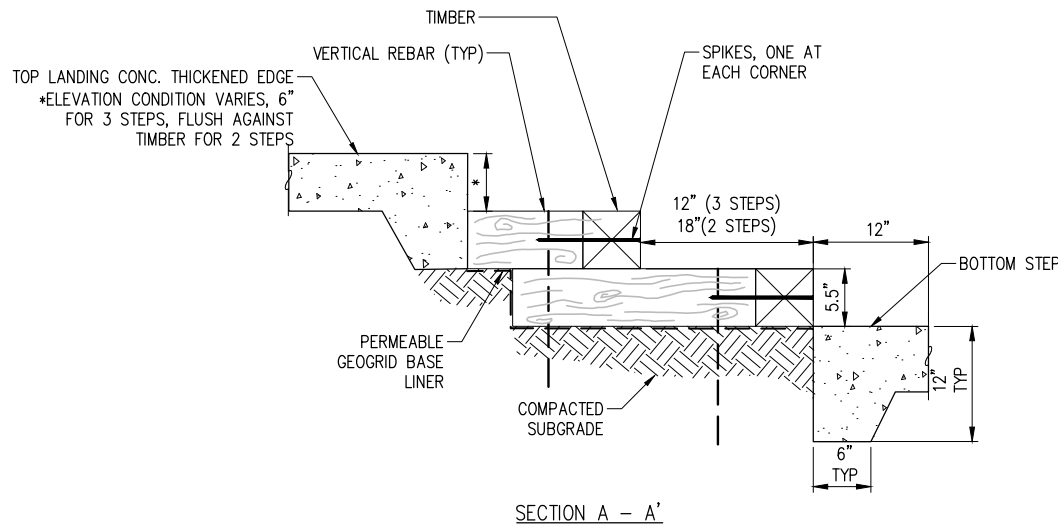


TIMBER STAIRS TREAD DETAIL

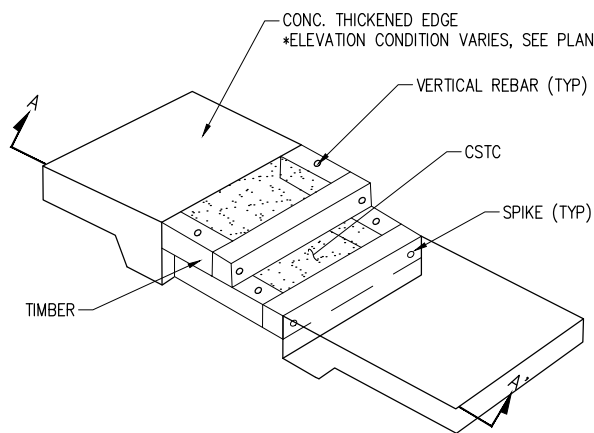
NOTES:

1. ALL WOOD SHALL BE "HEM-FIR", #2 OR BETTER.
2. ALL WOOD ACZA PRESSURE-TREATED PER LP-22 FOR GROUND CONTACT, 0.6' RETENTION OR AS APPROVED BY CITY.
3. IF CUT IS MADE ON TIMBER DURING CONSTRUCTION, IT SHALL BE SEALED WITH WEATHER RESISTANT/WATERPROOF STAIN.

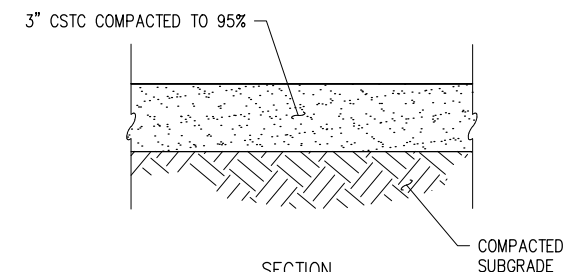
#3 OR #4 VERTICAL REBAR, 30" LONG, INSTALL 2 EA STEP MIN. DRIVE TOP TREAD REBAR THROUGH BOTTOM LAPPED TREAD. SEE SECTION (A-A). TOP MOST TREAD AT FIRST LANDING SHALL HAVE 4 REBAR STAKES INSTALLED.



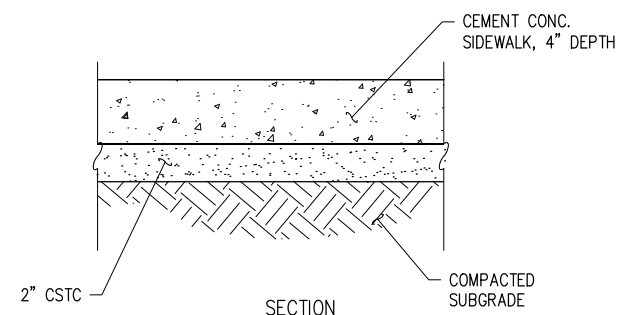
SECTION A - A'



ISOMETRIC VIEW



SECTION
GRAVEL PATH DETAIL
NTS



SECTION
CEMENT CONC. SIDEWALK DETAIL
NTS

TIMBER STEPS DETAIL

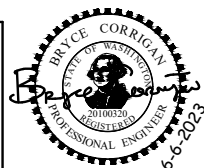
NTS

NO.	DATE	BY	APPR.	REVISIONS

Approved By

ENGINEERING MANAGER	DATE
PROJECT MANAGER	DATE
PROJECT ENGINEER	DATE

9MER010300DET-GRAD.dwg	FILENAME
BMC	DESIGNED BY
6/2023	DATE
BMC	DRAWN BY
6/2023	DATE
BMC	CHECKED BY
6/2023	DATE



KPG
PSOMAS
Seattle
3131 Elliott Avenue, Suite 400
Seattle, WA 98121 206.286.1640
Tacoma | Wenatchee | KPG.com

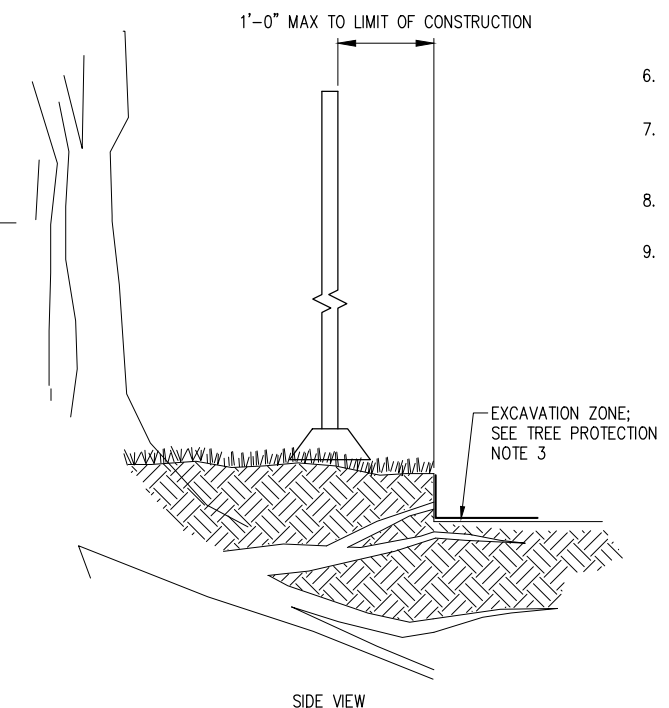
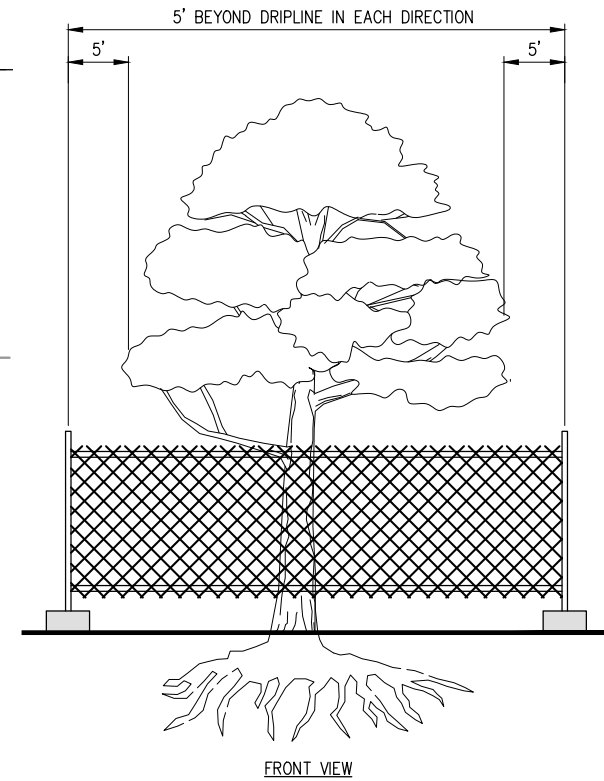
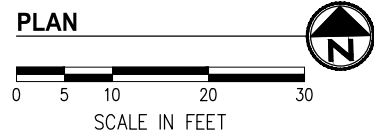
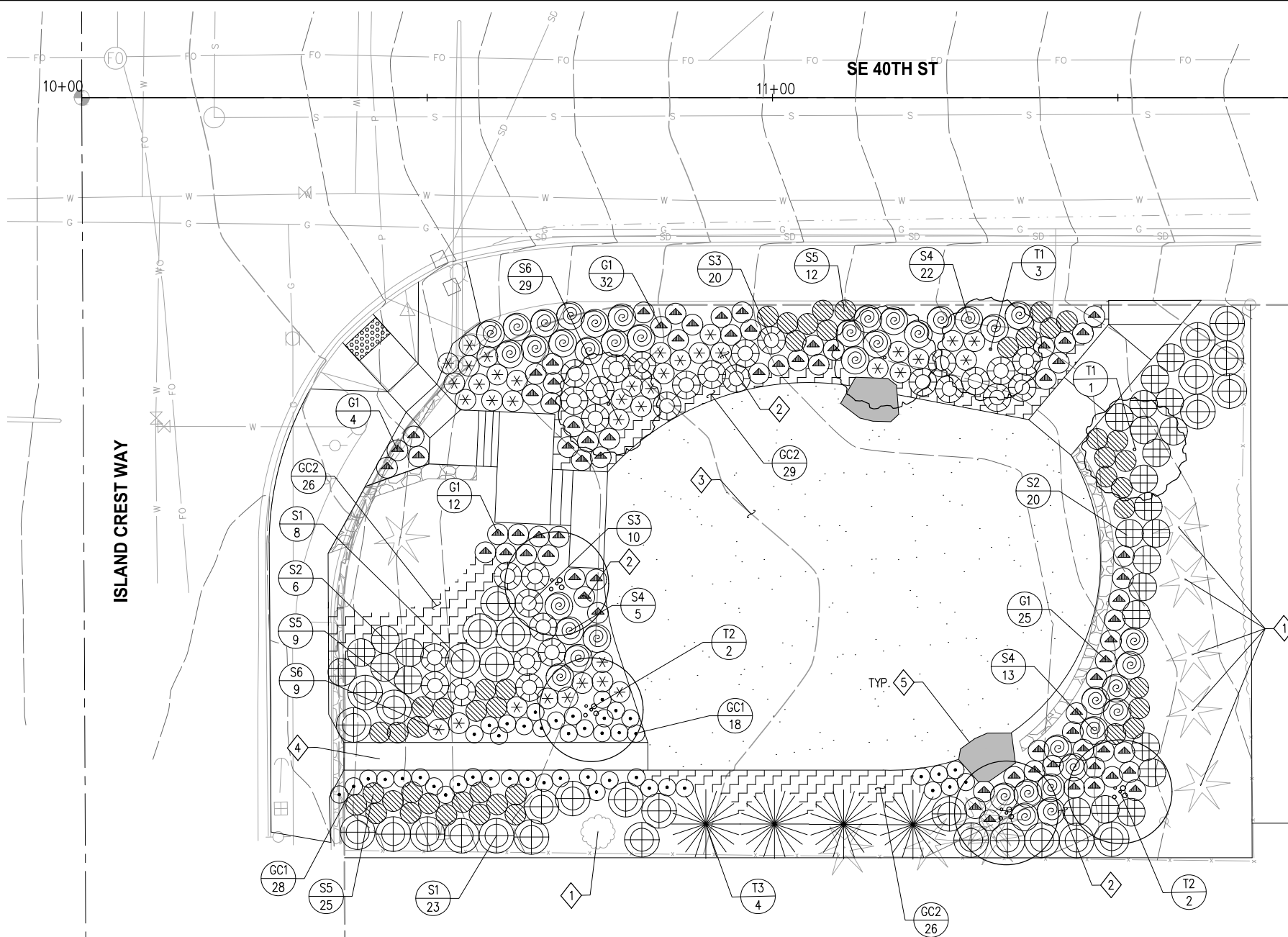
BID DOCUMENT



CITY OF MERCER ISLAND
4004 ICW PEDESTRIAN CORNER
IMPROVEMENTS

SITE DETAILS

K:\PROJECTS\MERCER IS\9MER010300- 4004 ICW Pedestrian Corner Improvement\DESIGN\Drawings\Contract\9MER010300LPN.dwg 6/6/2023 2:20 PM



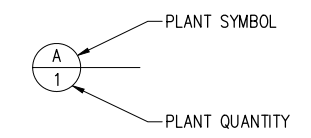
TREE PROTECTION DETAIL
NTS

CONSTRUCTION NOTES

- 1 EXISTING TREE TO REMAIN; SAVE AND PROTECT PER DETAIL, THIS SHEET. PLANT LAYOUT TO BE ADJUSTED IN THE FIELD TO MINIMIZE ROOT DISTURBANCE TO EXISTING TREES; PLANT LAYOUT SHALL BE APPROVED IN THE FIELD BY THE ENGINEER PRIOR TO INSTALLATION.
- 2 PLANTING AREA; INSTALL 6" DEPTH TOPSOIL TYPE A AND INSTALL 3" BARK OR WOOD CHIP MULCH, TYP.
- 3 SEEDED LAWN AREA; INSTALL 4" TOPSOIL TYPE A AND HYDROSEED WITH SEEDED LAWN MIX, TYP.
- 4 GRAVEL PATH. SEE SITE PLAN, DETAIL SHEET, 5.
- 5 INSTALL BOULDER BENCH PER DETAIL, SHEET 7.

TREE PROTECTION NOTES

1. SIX FOOT HIGH HIGH-VISIBILITY FENCE SHALL BE PLACED 5' BEYOND DRIPLINE OF TREE TO BE SAVED. FENCE SHALL COMPLETELY ENCLOSE TREE(S). INSTALL FENCE POSTS USING PIER BLOCKS ONLY. AVOID DRIVING POSTS OR STAKES INTO MAJOR ROOTS.
2. AREA WITHIN TREE PROTECTION FENCING SHALL BE MULCHED WITH 3-4" OF BARK OR WOOD CHIP MULCH, TYP. KEEP MULCH AWAY FROM TREE TRUNK OR BASE OF OTHER PLANT MATERIAL WITHIN TREE PROTECTION FENCING.
3. TREATMENT OF ROOTS EXPOSED DURING CONSTRUCTION: FOR ROOTS OVER 1" IN DIAMETER DAMAGED DURING CONSTRUCTION; MAKE A CLEAN, STRAIGHT CUT TO REMOVE DAMAGED PORTION OF ROOT. ALL EXPOSED ROOTS SHALL BE TEMPORARILY COVERED WITH DAMP BURLAP TO PREVENT DRYING, AND COVERED WITH SOIL AS SOON AS POSSIBLE.
4. WORK WITHIN PROTECTION FENCE SHALL BE DONE MANUALLY. NO STOCKPILE OF MATERIALS, VEHICULAR TRAFFIC, OR STORAGE OF EQUIPMENT OR MACHINERY SHALL BE ALLOWED WITHIN THE LIMITS OF THE FENCING.
5. PORTIONS OF THE TREE PROTECTION FENCING MAY BE MOVED 1/3 INTO THE DRIP LINE IF UNABLE TO PROTECT ENTIRE DRIP LINE AREA. THIS IS ONLY PERMITTED FOR PORTIONS OF THE DRIP LINE AREA THAT ARE IN CONFLICT WITH CONSTRUCTION ACTIVITIES BASED UPON ENGINEER'S APPROVAL.
6. ALL TREES NOTED FOR REMOVAL SHALL BE APPROVED BY ENGINEER PRIOR TO START OF CONSTRUCTION ACTIVITIES.
7. ALL TREES TO REMAIN WITHIN CLEARING AND GRUBBING LIMITS, SHALL BE TAGGED FOR APPROVAL BY ENGINEER, PRIOR TO START OF CONSTRUCTION ACTIVITIES.
8. MAINTAIN FENCING IN PLACE UNTIL THE CITY AUTHORIZES REMOVAL OR A FINAL APPROVAL IS ISSUED.
9. SIGNS SHALL BE ATTACHED TO THE TREE PROTECTION FENCING STATING THAT THE TREE IS DESIGNATED FOR PROTECTION, THAT THE AREA INSIDE OF THE FENCE IS NOT TO BE DISTURBED UNLESS PRIOR APPROVAL HAS BEEN OBTAINED FROM THE ENGINEER, AND THAT NO MATERIAL OR EQUIPMENT STORAGE SHALL BE ALLOWED WITHIN LIMITS OF THE FENCING.



SEE SHEET 7 FOR LANDSCAPE SCHEDULE, DETAILS AND GENERAL NOTES

NO.	DATE	BY	APPR.	REVISIONS

Approved By		9MER010300LPN.dwg
ENGINEERING MANAGER	DATE	FILENAME
PROJECT MANAGER	DATE	MR
PROJECT ENGINEER	DATE	DESIGNED BY
		MR
		DRAWN BY
		EG
		CHECKED BY
		DATE



KPG
PSOMAS
Seattle
3131 Elliott Avenue, Suite 400
Seattle, WA 98121 206.286.1640
Tacoma | Wenatchee | KPG.com

BID DOCUMENT

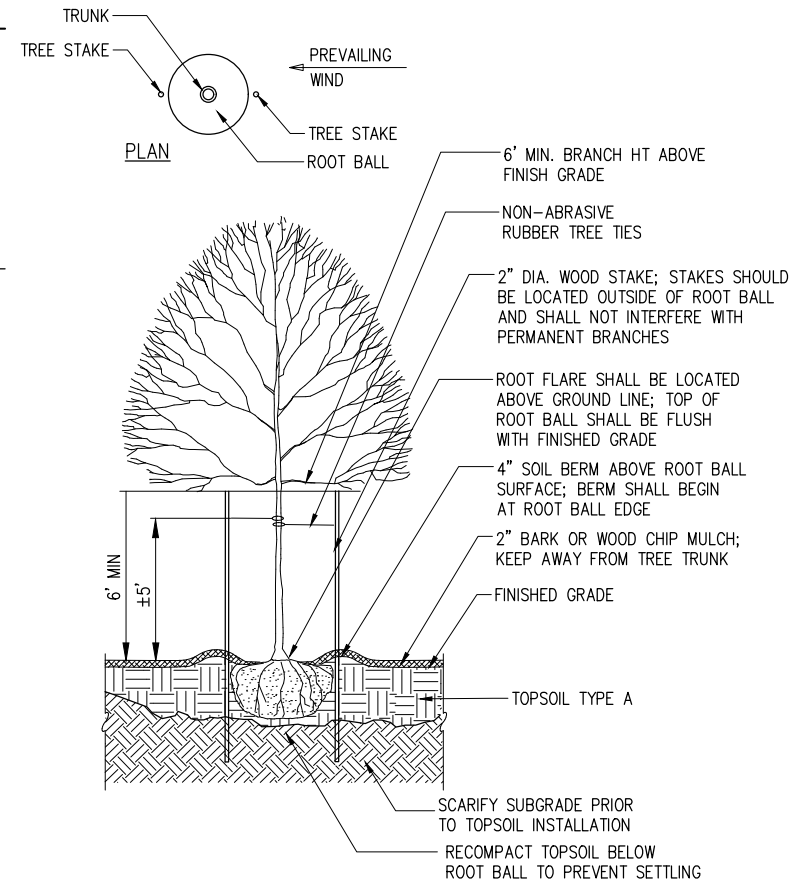


CITY OF MERCER ISLAND
4004 ICW PEDESTRIAN CORNER IMPROVEMENTS

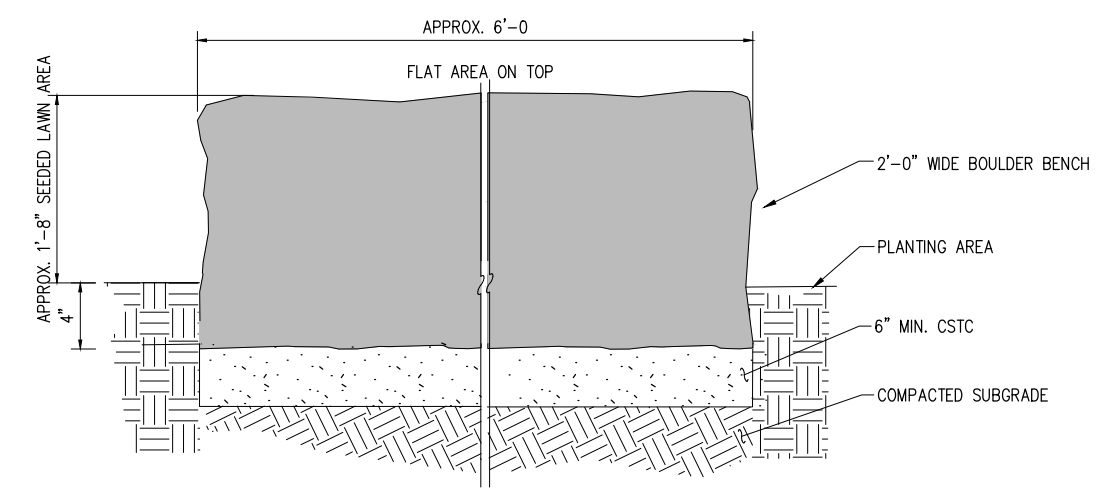
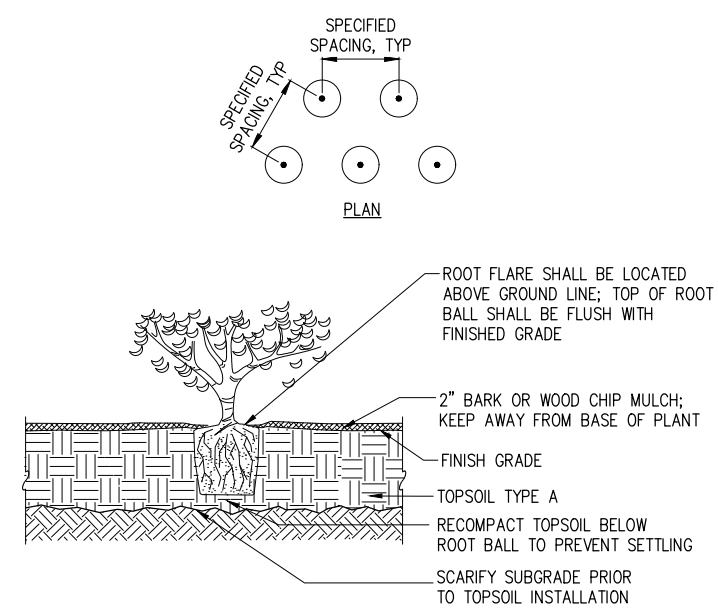
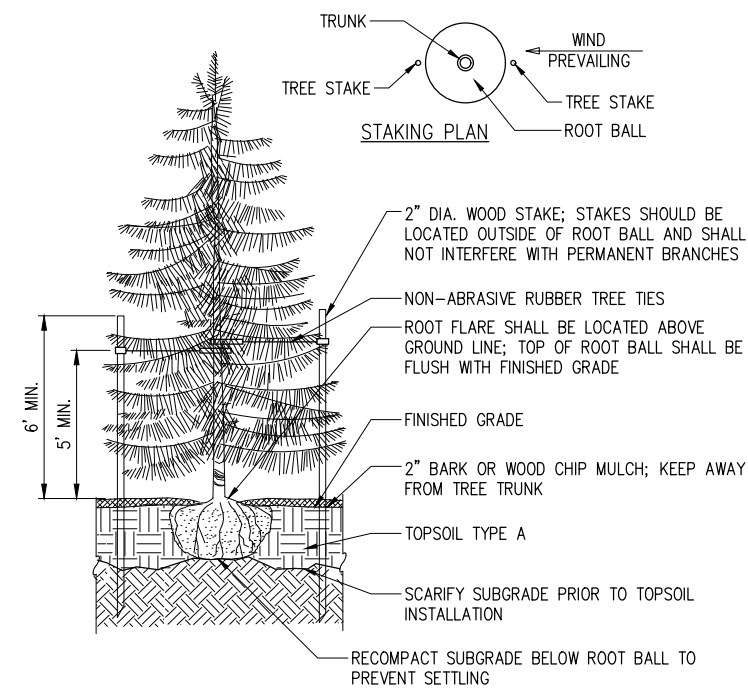
LANDSCAPE PLAN	
KPG PROJECT No. 9MER010300	SHT 6 OF 9

PLANT SCHEDULE

SYMBOL	BOTANICAL NAME/Common Name	QTY	SIZE	REMARKS
	ACCENT TREE			
T1	MAGNOLIA 'BUTTERFLIES'/ BUTTERFLIES MAGNOLIA	4	2" CAL. 10-12' HT.	B&B WELL-BRANCHED
T2	AMELANCHIER X GRANDIFLORA 'AUTUMN BRILLIANCE'/ AUTUMN BRILLIANCE SERVICEBERRY	4	7'-8' HT. 3-5 CANES MIN.	B&B WELL-BRANCHED 1" MIN. CAL./CANE
T3	THUJA PLICATA VAR. EXCELSA/ EXCELSA WESTERN RED CEDAR	4	7'-8' HT.	B&B WELL-BRANCHED
	SHRUBS			
S1	MYRICA CALIFORNICA/ PACIFIC WAX MYRTLE	31	5 GAL. CONT.	60" O.C. TRI. SP. TYP.
S2	RIBES SANGUINEUM 'KING EDWARD VII'/ KING EDWARD FLOWERING CURRANT	26	5 GAL. CONT.	48" O.C. TRI. SP. TYP.
S3	ESCALLONIA 'NEWPORT DWARF'/ NEWPORT DWARF ESCALLONIA	29	2 GAL. CONT.	36" O.C. TRI. SP. TYP.
S4	SPIRAEA BETULIFOLIA VAR. LUCIDA/ SHINYLEAF SPIREA	39	2 GAL. CONT.	36" O.C. TRI. SP. TYP.
S5	VACCINIUM OVATUM/ EVERGREEN HUCKLEBERRY	45	2 GAL. CONT.	36" O.C. TRI. SP. TYP.
S6	BERBERIS THUNBERGII 'CONCORDE'/ CONCORDE JAPANESE BARBERRY	39	1 GAL. CONT.	30" O.C. TRI. SP. TYP.
	GRASSES			
G1	MUHLENBERGIA LINDHEIMERI/ LINDHEIMER'S MUHLY GRASS	73	2 GAL. CONT.	36" O.C. TRI. SP. TYP.
	GROUNDCOVER			
GC1	POLYSTICHUM MUNITUM/ SWORD FERN	46	1 GAL. CONT.	24" O.C. TRI. SP. TYP.
GC2	ARCTOSTAPHYLOS UVA-URSI/ KINNIKINICK	79	1 GAL. CONT.	30" O.C. TRI. SP. TYP.
	SEEDING LAWN	385 SY		



- GENERAL NOTES**
- ALL PLANT MATERIALS SHALL MEET THE AMERICAN STANDARD FOR NURSERY STOCK, ANSI Z60.1 MOST CURRENT VERSION.
 - PLANT, MAINTAIN AND WARRANTY PER SECTION 8-02 OF THE SPECIAL PROVISIONS.
 - DO NOT SUBSTITUTE SPECIES WITHOUT THE APPROVAL OF ENGINEER.
 - INSTALL 2" BARK OR WOOD CHIP MULCH OVER ALL DISTURBED AREAS NOT BEING PLANTED OR SEEDED, UNLESS OTHERWISE NOTED.
 - PROPERTY RESTORATION TO BE DONE AS DIRECTED BY THE ENGINEER.



K:\PROJECTS\MERCER IS\9MER010300-4004 ICW Pedestrian Corner Improvement\DESIGN Drawings\Contract\9MER010300DET-LPN.dwg 6/6/2023 2:20 PM

NO.	DATE	BY	APPR.	REVISIONS

Approved By

ENGINEERING MANAGER	DATE	9MER010300DET-LPN.dwg
PROJECT MANAGER	DATE	FILENAME
PROJECT ENGINEER	DATE	MR
		DESIGNED BY
		MR
		DRAWN BY
		EG
		CHECKED BY
		DATE

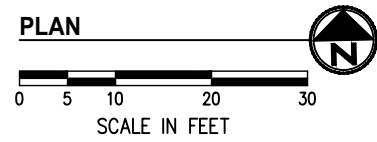
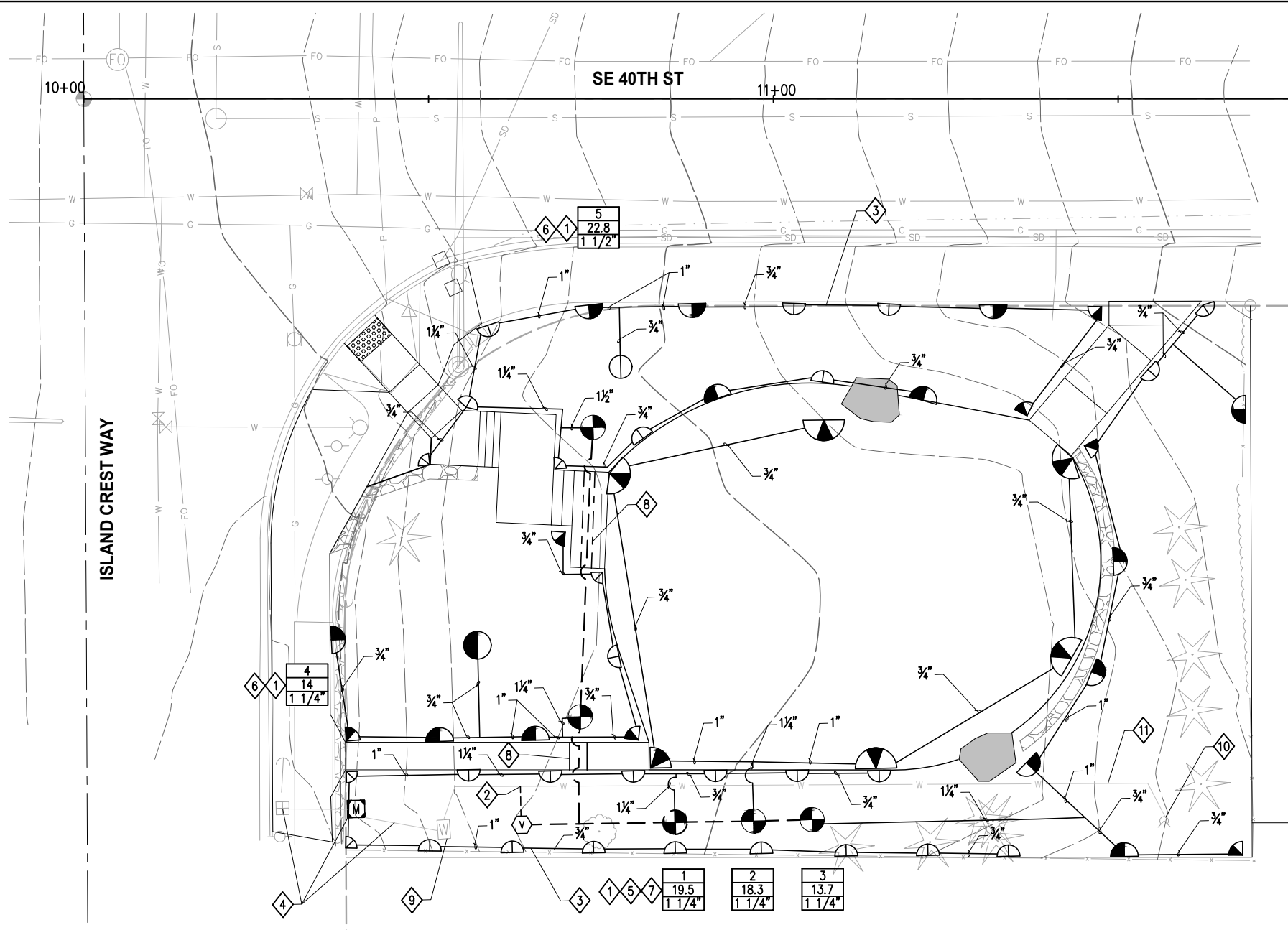


BID DOCUMENT



CITY OF MERCER ISLAND
4004 ICW PEDESTRIAN CORNER IMPROVEMENTS

K:\PROJECTS\MERCER IS\9MER010300\Drawings\Contract\9MER010300IRR.dwg 6/13/2023 1:54 PM



CONSTRUCTION NOTES

- 1 INSTALL CONTROL VALVE BOX IN PLANTER AREA, TIGHT TO EDGE OF PLANTER OR BACK OF SIDEWALK TO MAXIMIZE PLANTING AREA; LOCATION SHOWN ON DRAWINGS IS DIAGRAMMATIC.
- 2 IRRIGATION POINT OF CONNECTION, CUT INTO AND CONNECT TO EXISTING 1" COPPER PIPE FOR IRRIGATION MAINLINE. PROVIDE 1" ISOLATION VALVE IN 10" DIA VALVE BOX. INSTALL 1" COPPER PIPE FROM CONNECTION TO SHUT OFF VALVE, THEN PVC MAINLINE DOWNSTREAM.
- 3 MAINLINE AND LATERAL LINES TO BE LOCATED IN PLANTER WHERE POSSIBLE; LOCATION SHOWN ON DRAWINGS IS DIAGRAMMATIC.
- 4 CITY UTILITY DEPT. TO RELOCATE EXISTING WATER METER SERVICE LOCATION INTO PARCEL BEHIND SIDEWALK AND TIE INTO EXISTING BACKFLOW DEVICE. COORDINATE WITH CITY UTILITY DEPT. AT LEAST 3-WEEKS IN ADVANCE OF WORK.
- 5 MAINFOLD VALVES IN ONE JUMBO IRRIGATION VALVE BOX (OR SIZE TO FIT) WITH BATTERY OPERATED CONTROLLER.
- 6 INSTALL ONE (1)-STATION BATTERY OPERATED CONTROLLER.
- 7 INSTALL ONE (4)-STATION BATTERY OPERATED CONTROLLER.
- 8 SLEEVE IRRIGATION LINES UNDER PAVEMENTS; SIZE AS NOTED IN IRRIGATION SCHEDULE, SHEET 9. COORDINATION SLEEVING WITH PAVEMENT INSTALLATION.
- 9 EXISTING BACKFLOW PREVENTION DEVICE.
- 10 EXISTING SPIGOT, VERIFY LOCATION, SAVE AND PROTECT.
- 11 EXISTING COPPER PIPE FEEDING SPIGOT ACROSS PARCEL., APROX. LOCATION, VERIFY ON SITE, SAVE AND PROTECT.

IRRIGATION LEGEND *

SYMBOL	DESCRIPTION
	12 SERIES MPR 1806-SAM-PRS
	15 SERIES MPR 1806-SAM-PRS
	5000 SERIES MPR 35
	AUTOMATIC CONTROL VALVE

* SEE SHEET 9 FOR COMPLETE SCHEDULE

PIPE SIZE CHART

GPM	SIZE
0 - 8	3/4"
8 - 13	1"
13 - 22	1 1/4"
22 - 32	1 1/2"
32 - 53	2"

NOTE: ALL IRRIGATION MAINLINE SHALL BE 2" PVC SCH 40, UNLESS OTHERWISE NOTED ON PLANS

SEE SHEET 9 FOR IRRIGATION SCHEDULE, DETAILS AND GENERAL NOTES

NO.	DATE	BY	APPR.	REVISIONS

Approved By

ENGINEERING MANAGER	DATE	9MER010300IRR.dwg	FILENAME
PROJECT MANAGER	DATE	EG	DESIGNED BY
PROJECT ENGINEER	DATE	MR	DRAWN BY
		EG	CHECKED BY
			DATE



KPG
PSOMAS
Seattle
3131 Elliott Avenue, Suite 400
Seattle, WA 98121 206.286.1640
Tacoma | Wenatchee | KPG.com

BID DOCUMENT



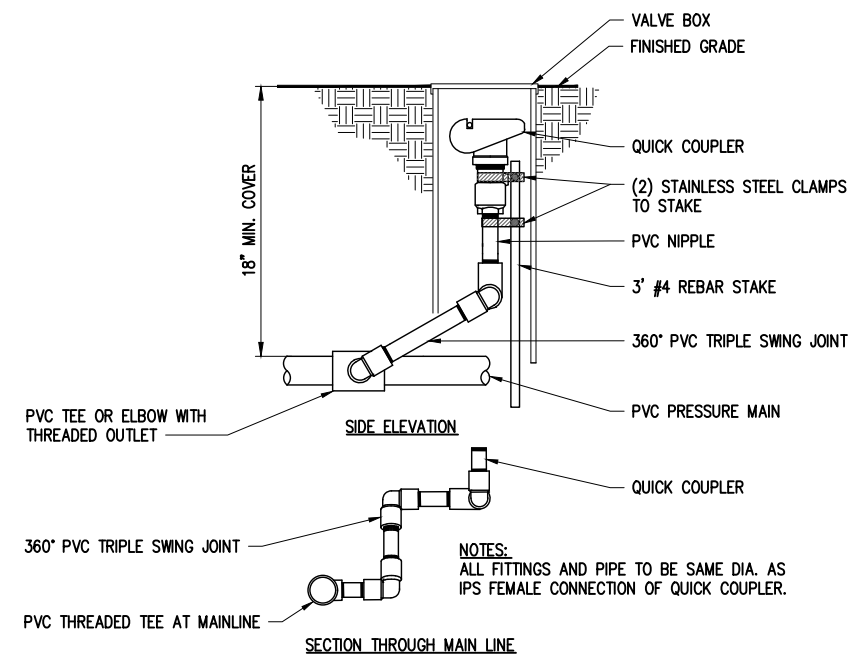
**CITY OF MERCER ISLAND
4004 ICW PEDESTRIAN CORNER
IMPROVEMENTS**

IRRIGATION PLAN	
KPG PROJECT No. 9MER010300	SHT <u>8</u> OF <u>9</u>

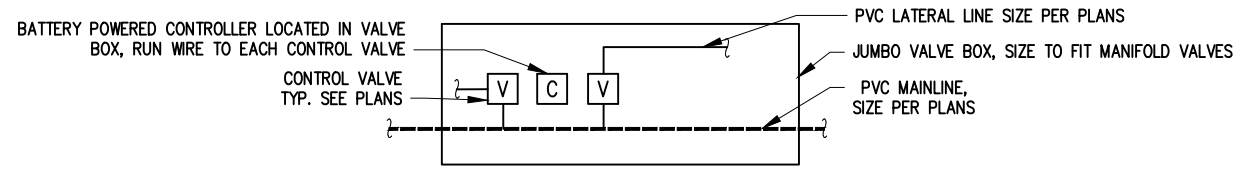
K:\PROJECTS\MERCER IS\9MER010300- 4004 ICW Pedestrian Corner Improvement\DESIGN\Drawings\Contract\9MER010300DET-IRR.dwg 6/13/2023 1:54 PM

IRRIGATION LEGEND			
SYMBOL	MANUFACTURER	MODEL NO.	DESCRIPTION
	RAINBIRD 12 SERIES MPR	1806-SAM-PRS30	SHRUB SPRAY HEAD - 6" PLASTIC POP-UP. 12' RADIUS AT 30 PSI. INSTALL ON FLEXIBLE RISER PER DETAIL.
	RAINBIRD 15 SERIES MPR	1806-SAM-PRS30	SHRUB SPRAY HEAD - 6" PLASTIC POP-UP. 15' RADIUS AT 30 PSI. INSTALL ON FLEXIBLE RISER PER DETAIL, THIS SHEET.
	RAINBIRD 5000 SERIES MPR	5004 MPR 35	LAWN ROTOR HEAD - 4" PLASTIC POP-UP. 35' RADIUS AT 35 PSI. INSTALL ON TRIPLE SWING JOINT, SEE DETAIL THIS SHEET.
	RAINBIRD	PEB	AUTOMATIC CONTROL VALVE - SIZE AS NOTED ON PLAN. SEE DETAIL, THIS SHEET, SUPPLY DC LATCHING SOLENOID ON EACH VALVE. SUPPLY HUNTER NODE-100 (1 STATION) OR NODE-400 (4 STATION) BATTERY OPERATED CONTROLLER, AS NOTED ON PLANS (3 TOTAL).
	KENNEDY	4057	BRASS ISOLATION VALVE, SIZE TO MATCH LINE
			PVC SCH 40, IRRIGATION MAIN LINE - 24" MIN. COVER - SIZE AS NOTED ON PLAN.
			CLASS 200, LATERAL SUPPLY LINE- 18" MIN. COVER - SIZE AS NOTED ON PLAN.
			SLEEVE, PVC SCHEDULE 40, SIZE TWICE INSERT PIPE DIA.
	INDICATES VALVE #		
	INDICATES APPROX. GPM		
	INDICATES VALVE SIZE		

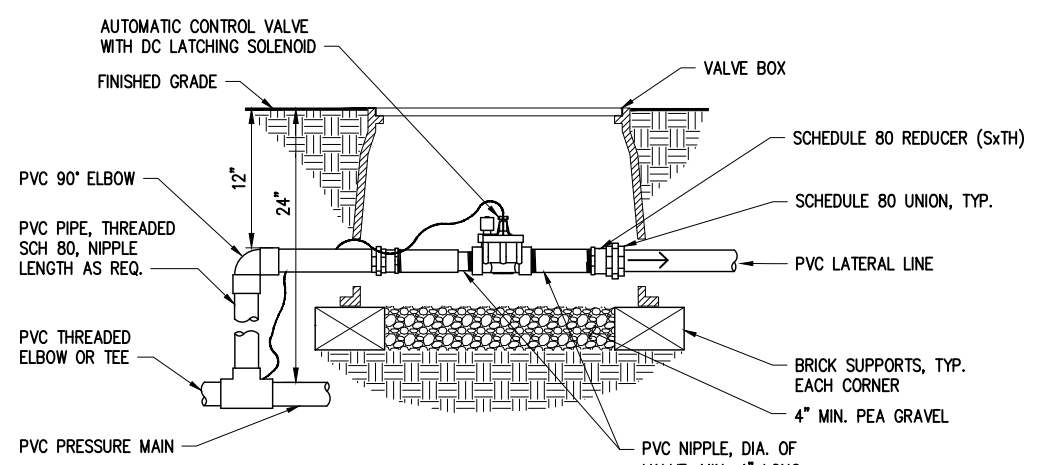
- ### GENERAL NOTES
- COORDINATE INSTALLATION OF IRRIGATION SYSTEM WITH INSTALLATION OF OTHER UTILITIES. LOCATE AND PROTECT ALL UNDERGROUND UTILITIES DURING INSTALLATION OF IRRIGATION SYSTEM.
 - CONTRACTOR MUST COORDINATE SLEEVING, ROAD CROSSING AND PIPE LOCATIONS WITH INSTALLATION OF UNDERGROUND UTILITIES (INCLUDING ELECTRICAL, SEWER, WATER AND GAS), SIDEWALK, URBAN DESIGN FEATURES AND ILLUMINATION.
 - IRRIGATION SYSTEM SHALL BE INSTALLED, TESTED, MAINTAINED AND GUARANTEED AS PER SPECIFICATIONS.
 - IRRIGATION SYSTEM IS DESIGNED TO OPERATE AT 25-30 PSI. CONTRACTOR SHALL FIELD CHECK EXISTING WATER PRESSURE, ADJUSTING PRESSURE REDUCING VALVE AS NECESSARY TO PROVIDE OPTIMAL PERFORMANCE.
 - LOCATION OF IRRIGATION MAINLINE, LATERALS, SLEEVING AND VALVES INDICATED ON DRAWING ARE DIAGRAMMATIC ONLY. ADJUST LOCATIONS AS NECESSARY. DO NOT OVERSPRAY ONTO PAVED SURFACES.
 - MAINLINE SHALL BE BURIED AT A DEPTH OF 24" BELOW FINISH GRADE. LATERAL LINES SHALL BE BURIED TO A DEPTH OF 18" BELOW FINISH GRADE.
 - SLEEVE UNDER ALL PAVED SURFACES AND CONCRETE SIDEWALK. SEE IRRIGATION PLANS FOR LOCATION OF PVC SLEEVING, SLEEVING SHALL BE 2 TIMES THE DIAMETER OF THE INSERT PIPE AND WIRES.
 - CONTROLLER WIRES SHALL BE TAPED TO IRRIGATION MAIN OR LATERAL LINES WHERE POSSIBLE. IF NOT AVAILABLE, WIRES TO CONTROLLER SHALL BE PLACED IN 1" /1.5" SLEEVE, USE 3M DBY SPLICE KITS.
 - ALL EQUIPMENT SHALL BE AS SPECIFIED OR APPROVED EQUAL. SYSTEM IS SPECIFICALLY DESIGNED FOR IRRIGATION EQUIPMENT SHOWN ON PLANS AND SUBSTITUTION WILL REQUIRE REDESIGN AND RECALCULATION OF IRRIGATION ZONES.



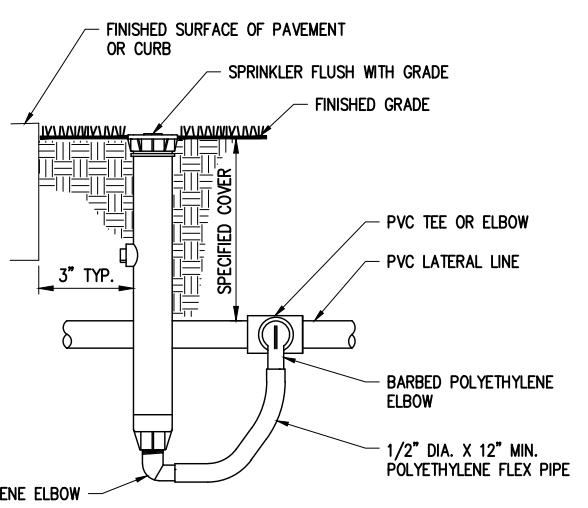
QUICK COUPLING VALVE / TRIPLE SWING JOINT
NTS



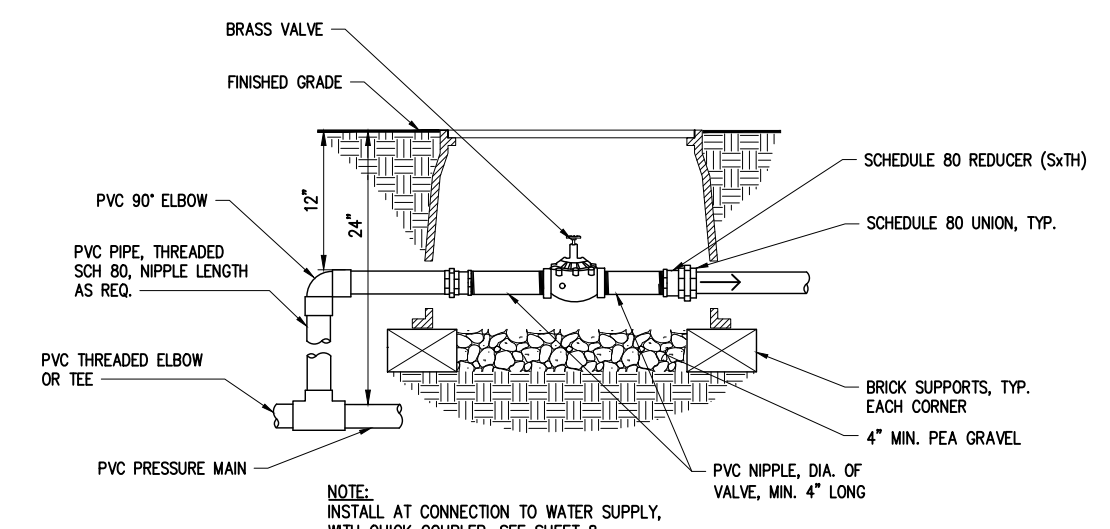
TYPICAL MANIFOLD VALVE DIAGRAM
NTS



AUTOMATIC CONTROL VALVE
NTS



TYPICAL FLEXIBLE RISER
NTS



ISOLATION VALVE
NTS

NO.	DATE	BY	APPR.	REVISIONS

Approved By		9MER010300DET-IRR.dwg
ENGINEERING MANAGER	DATE	FILENAME
PROJECT MANAGER	DATE	EG
PROJECT ENGINEER	DATE	DESIGNED BY
		MR
		DRAWN BY
		EG
		CHECKED BY
		DATE



KPG
PSOMAS
Seattle
3131 Elliott Avenue, Suite 400
Seattle, WA 98121 206.286.1640
Tacoma | Wenatchee | KPG.com

BID DOCUMENT



CITY OF MERCER ISLAND
4004 ICW PEDESTRIAN CORNER
IMPROVEMENTS