

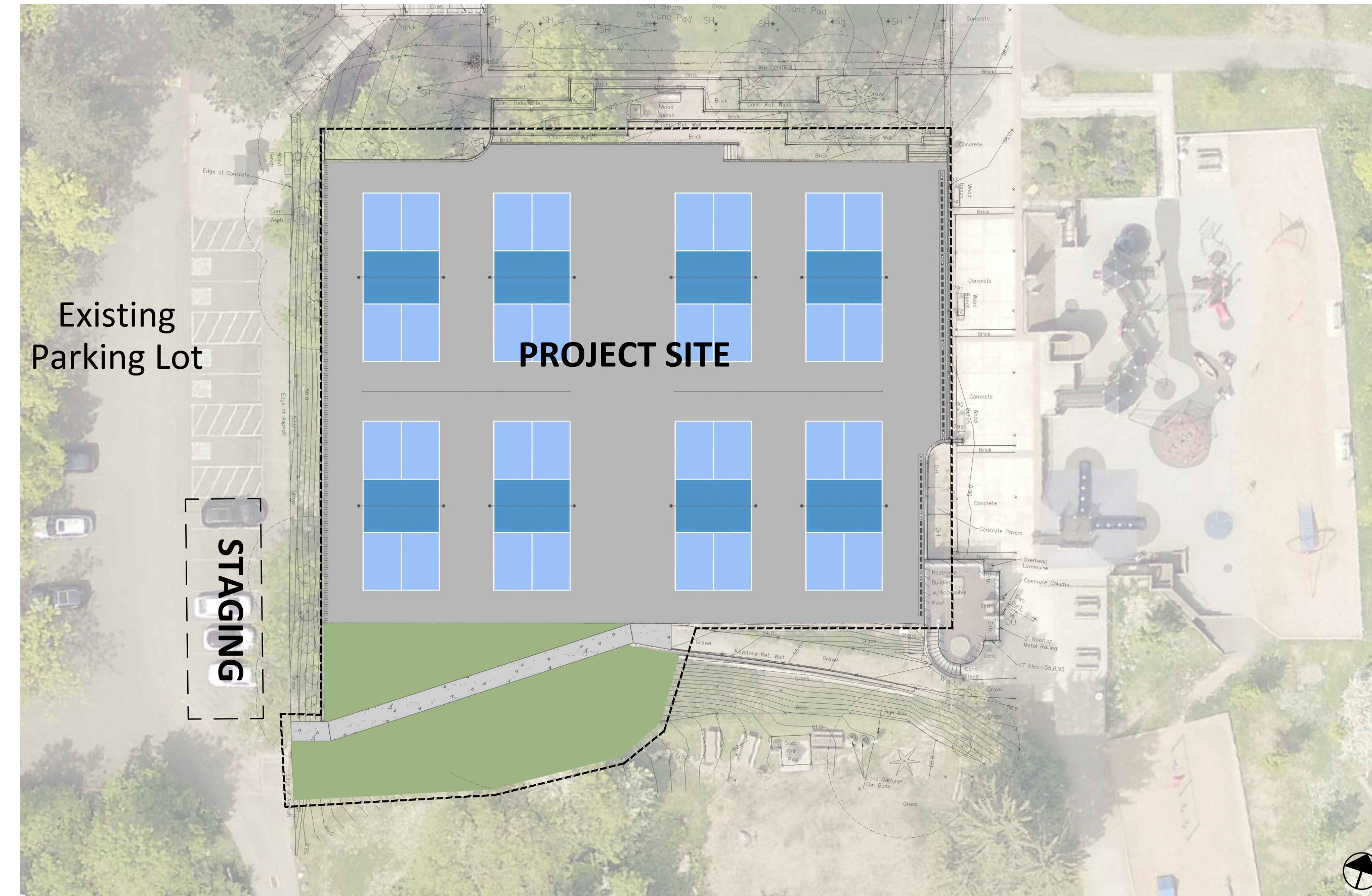
# CITY OF MERCER ISLAND

## LUTHER BURBANK PARK PICKLEBALL COURTS



VICINITY MAP

**Project Site:**  
2040 84th Ave SE,  
Mercer Island, WA 98040



SITE PLAN

### Owner

City of Mercer Island  
9611 SE 36th Street  
Mercer Island, WA 98040  
(206) 275-7600 Phone

### Prime Consultant

D.A. Hogan & Associates, Inc.  
1450 114th Avenue SE., Suite 225  
Bellevue, WA 98004  
(206) 285-0400 Phone

### Civil Engineering

LPD Engineering  
1932 1st Avenue, Suite 500  
Seattle, WA 98101  
(206) 725-1211 Phone

### Electrical Engineer

Stantec  
3400 188th Street, Suite 285  
Lynnwood, WA 98037  
(206) 224-3689 Phone

### Drawing Index

F001	Cover Sheet & Drawing Index
F010	Site Preparation Plan
F020	T.E.S.C. Details and Notes
F100	Color Layout Plan
F110	Layout Plan
F120	Grading & Drainage Plan
F210	Typical Details
F220	Site Details
E110	Electrical Site Plan
E200	Electrical Details

REVISION DATE



LUTHER  
BURBANK PARK  
PICKLEBALL  
COURTS



**DA HOGAN**  
1450 114th Ave. SE, Suite 225  
Bellevue, WA 98004  
P. 206-285-0400  
www.dahogan.com



PERMIT / PRICING SET

DATE 3-8-24

SCALE NTS

DRAWN CPW

CHECKED EIG

COPYRIGHT © 2024 D.A. HOGAN & ASSOCIATES

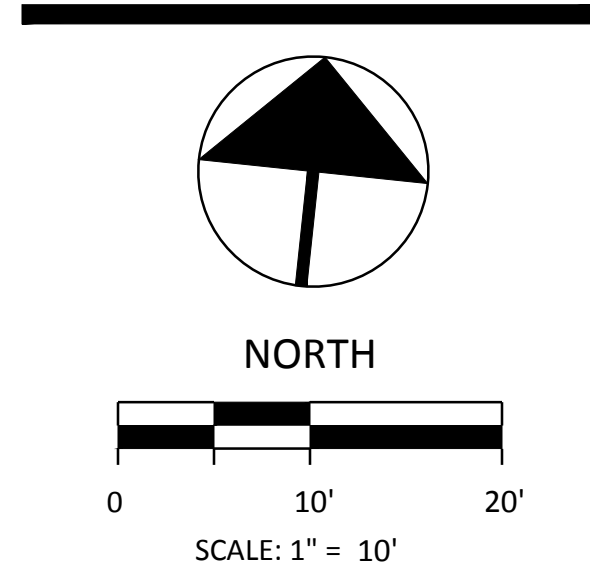
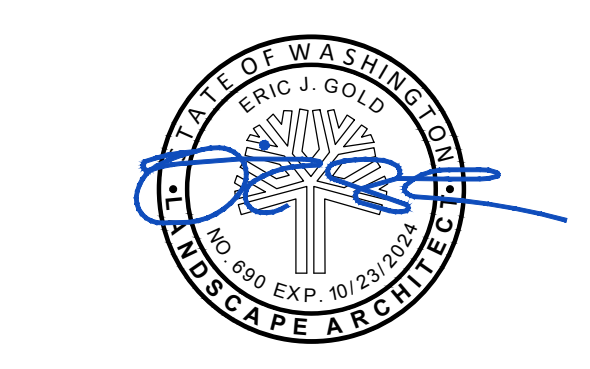
COVER SHEET &  
DRAWING INDEX

SHEET

F001



**LUTHER BURBANK PARK PICKLEBALL COURTS**



**PERMIT / PRICING SET**

DATE	3-8-24
SCALE	1"=10'
DRAWN	CPW
CHECKED	EJG
COPYRIGHT © 2024 D.A. HOGAN & ASSOCIATES	

**SITE PREPARATION PLAN**

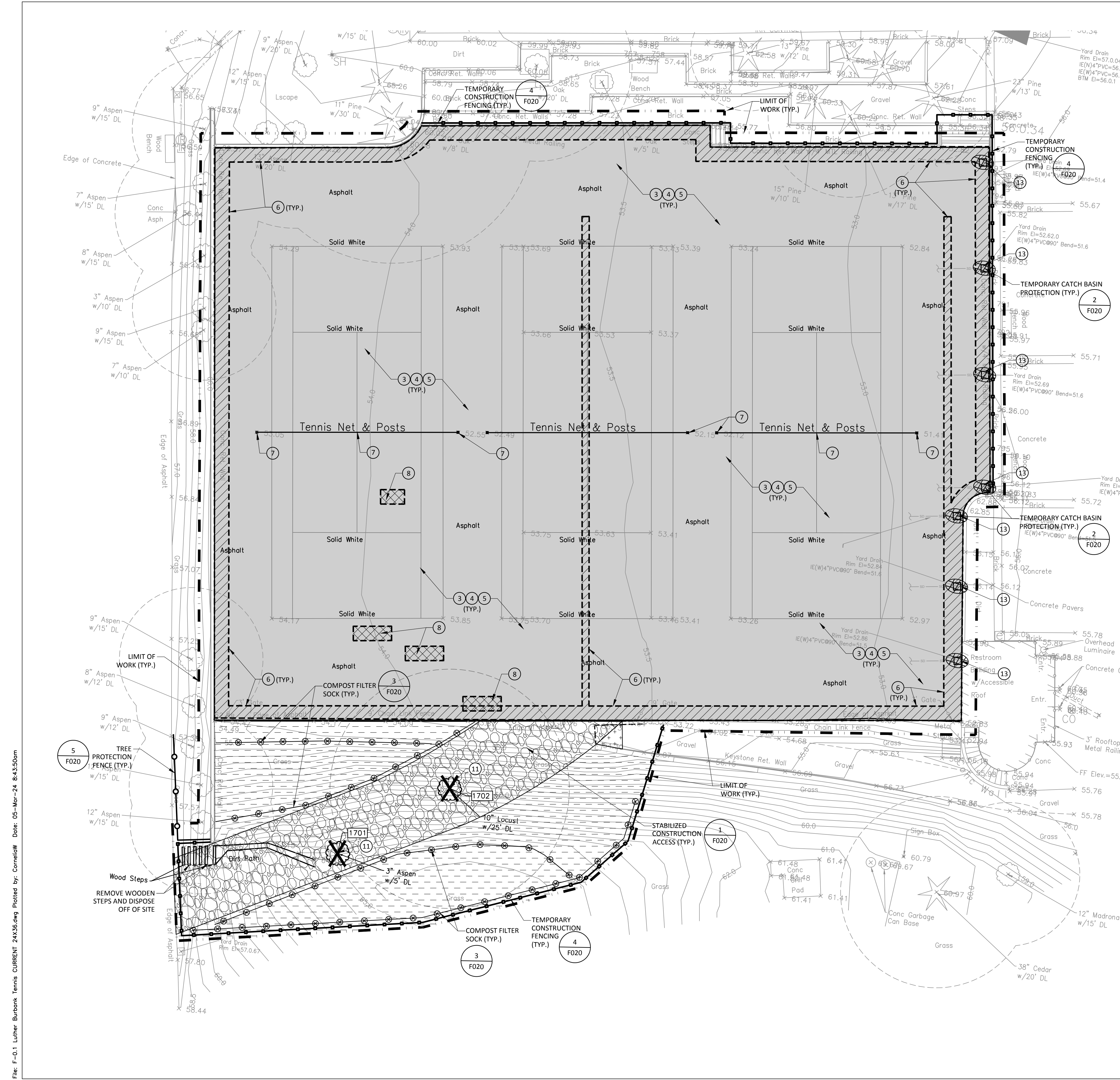
SHEET  
**F010**

**SITE PREPARATION NOTES**

- CALL 8-1-1 BEFORE YOU DIG. LOCATE, IDENTIFY AND VERIFY CONDITION OF ALL SITE UTILITIES PRIOR TO COMMENCING THE WORK.
  - CONSTRUCTION ACCESS. CONTRACTOR SHALL BE RESPONSIBLE FOR SECURING ALL GATES AND FENCES AT PERIMETER OF THIS SITE TO ESTABLISH A SECURE WORK AREA. WORK MAY INCLUDE TEMPORARY FENCING. MINIMUM SECURITY FENCE TO BE 6 FEET HEIGHT, CHAIN LINK.
  - PRESSURE WASH AND CLEAN EXISTING ACRYLIC SURFACING TO REMAIN. PREPARE AREA TO RECEIVE NEW ASPHALT PAVING LIFT.
  - ALL CRACKS GREATER THAN 1/4" SHALL BE CLEANED OF ALL DEBRIS AND FILLED WITH APPROVED JOINT FILLER PRODUCT.
  - GRIND OR FILL AREA UP TO 1" DEPTH TO CREATE UNIFORM LIFT. COORDINATE WITH GRADING PLAN.
  - SAWCUT AND REMOVE ASPHALT PAVING TO ACCOMMODATE NEW UTILITIES AND GRADE TRANSITIONS.
  - CUT EXISTING TENNIS NET POSTS AND NET TIE DOWN FLUSH TO EXISTING COURT SURFACE. ABANDON IN PLACE AND FILL VOIDS WITH GROUT.
  - PRIOR TO GRIND AND OVERLAY, REMOVE ALL EXISTING CONCRETE PATCHES. CONTRACTOR SHALL QUANTIFY, LOCATE, REMOVE AND PATCH WITH 3" TO 4" HMA ASPHALT OVER CRUSHED ROCK BASE AS PART OF THE BASE BID.
  - PROTECT EXISTING RETAINING WALL TO REMAIN.
  - RESTORE ALL DISTURBED AREAS TO ORIGINAL OR BETTER CONDITION.
  - REMOVE EXISTING TREE, 3 TOTAL, INCLUDING STUMP AND DISPOSE OF OFF SITE. EXACT TREES/SHRUBS SHALL BE FIELD VERIFIED WITH THE LANDSCAPE ARCHITECT PRIOR TO REMOVAL. BACKFILL AND COMPACT EXCAVATED AREAS.
  - STRIP AREA WITHIN LIMITS OF DISTURBANCE OF EXISTING SOD AND ORGANIC MATERIALS AND DISPOSE OF OFF SITE. ALL EXCESS AND UNSUITABLE SOIL MATERIALS SHALL BE REMOVED AND DISPOSED OF OFF SITE.
  - REMOVE EXISTING YARD DRAIN AND PLUG PENETRATION. PROTECT EXISTING DRAIN PIPE TO REMAIN AND RECONNECT TO NEW STRUCTURE.
  - SEE SHEET F020 FOR T.E.S.C. NOTES.
  - PROTECT ALL UTILITIES TO REMAIN
1. (INDICATES GENERAL CONSTRUCTION NOTE)  
3. (INDICATES SPECIFIC CONSTRUCTION KEYNOTE)

**DEMOLITION & T.E.S.C. LEGEND**

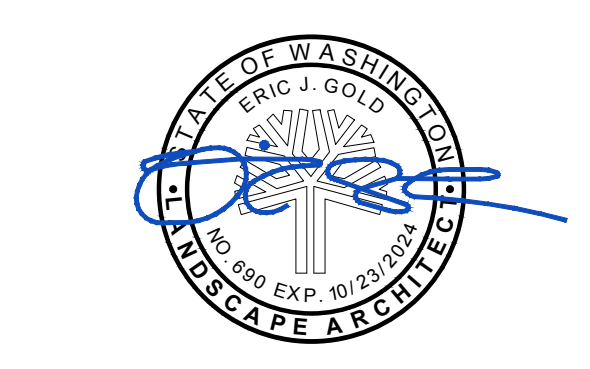
	EXISTING ACRYLIC SURFACING, ASPHALT PAVING, AND BASE TO RECEIVE ASPHALT LIFT. PROTECT ASPHALT TO REMAIN.
	CLEAR AND GRUB ORGANIC MATERIAL
	EXCAVATE GRAVEL AS NEEDED TO ACCOMMODATE NEW IMPROVEMENTS
	LIMIT OF WORK
	SAWCUT AND REMOVE EXISTING ASPHALT PAVING
	SAWCUT AND REMOVE EXISTING CONCRETE PATCH
	SAWCUT LINE
	EXISTING FENCING TO REMAIN
	TEMPORARY CONSTRUCTION FENCE
	CATCH BASIN PROTECTION
	TEMPORARY CONSTRUCTION ENTRANCE
	COMPOST FILTER SOCK
	PROTECT EXISTING TREES TO REMAIN
	EXISTING TREES TO BE REMOVED (MERCER ISLAND PARKS TREE PERMIT 2401-081)
	TREE PROTECTION FENCE



File: F-01 Luther Burbank Tennis CURRENT 24X36.dwg Plotted by: Corneilaw Date: 05-Mar-24 8:43:50am



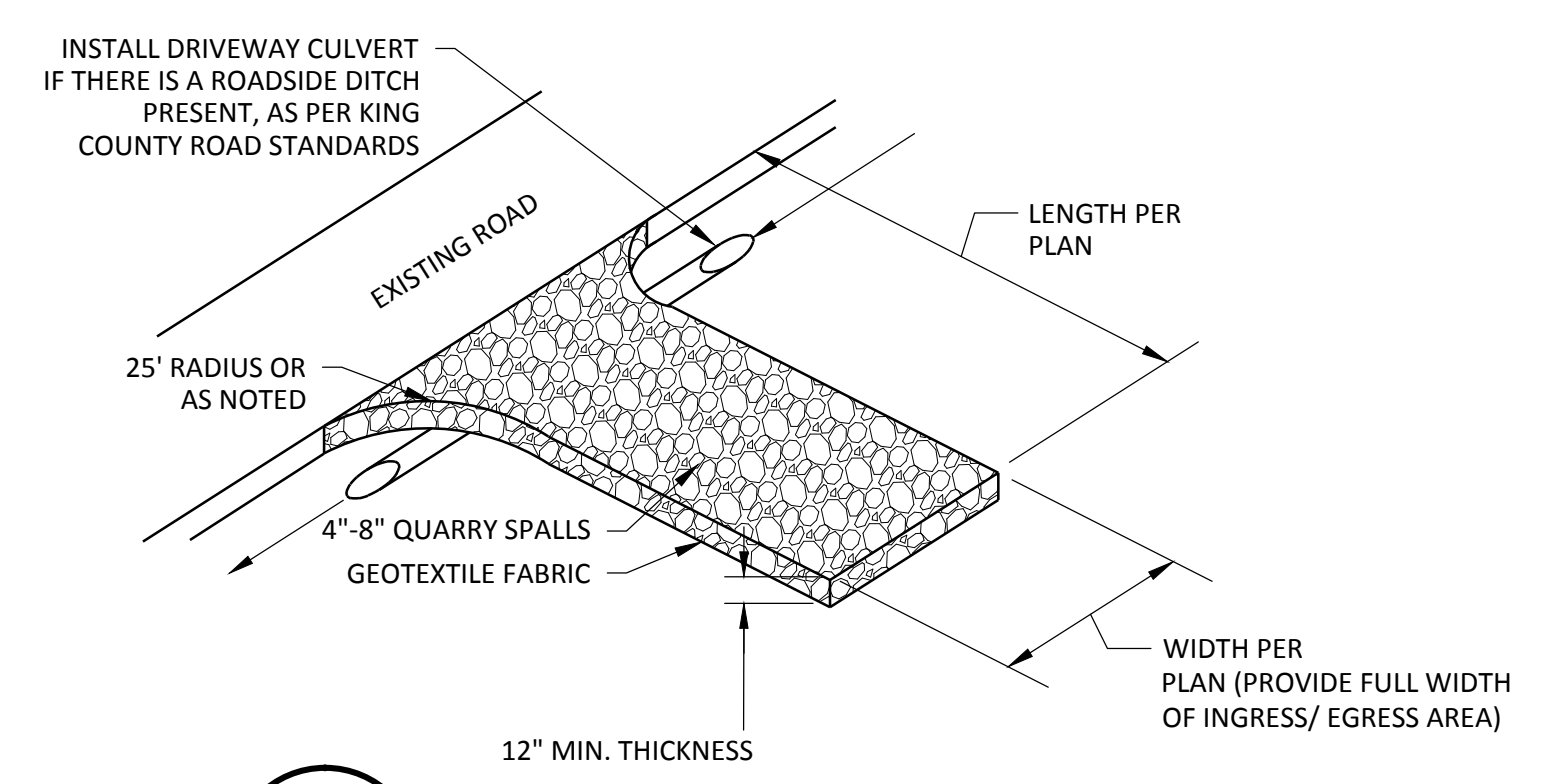
**LUTHER BURBANK PARK PICKLEBALL COURTS**



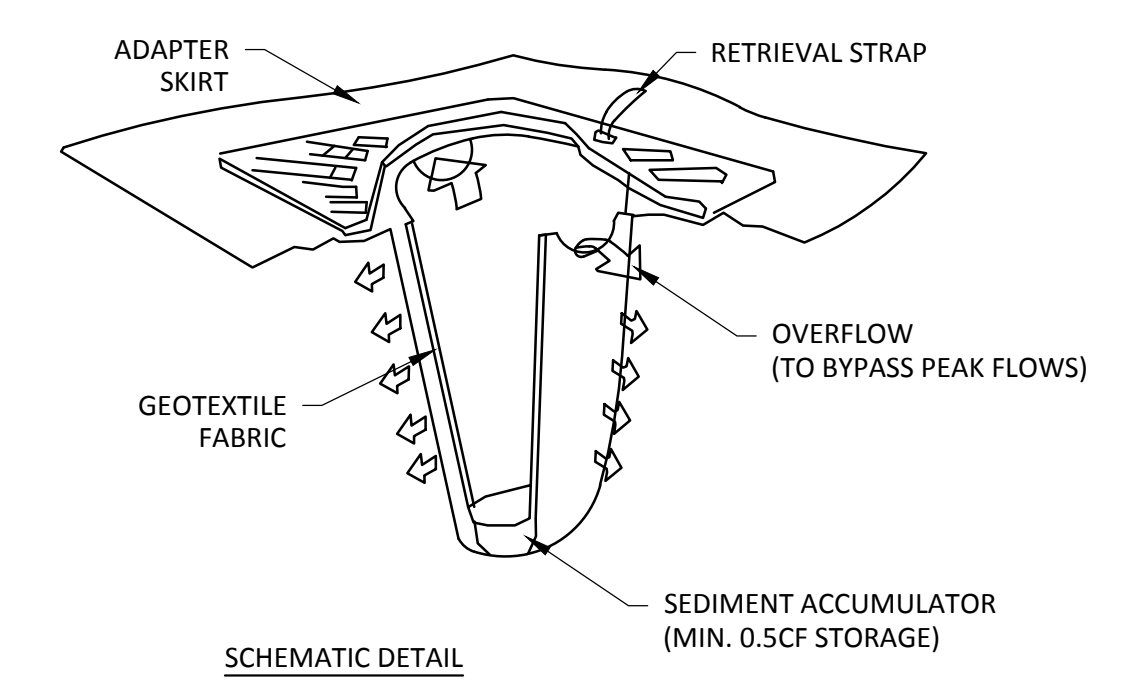
**PERMIT / PRICING SET**

DATE	3-8-24
SCALE	NTS
DRAWN	CPW
CHECKED	EJG
COPYRIGHT © 2024 D.A. HOGAN & ASSOCIATES	

**T.E.S.C. DETAILS & NOTES**

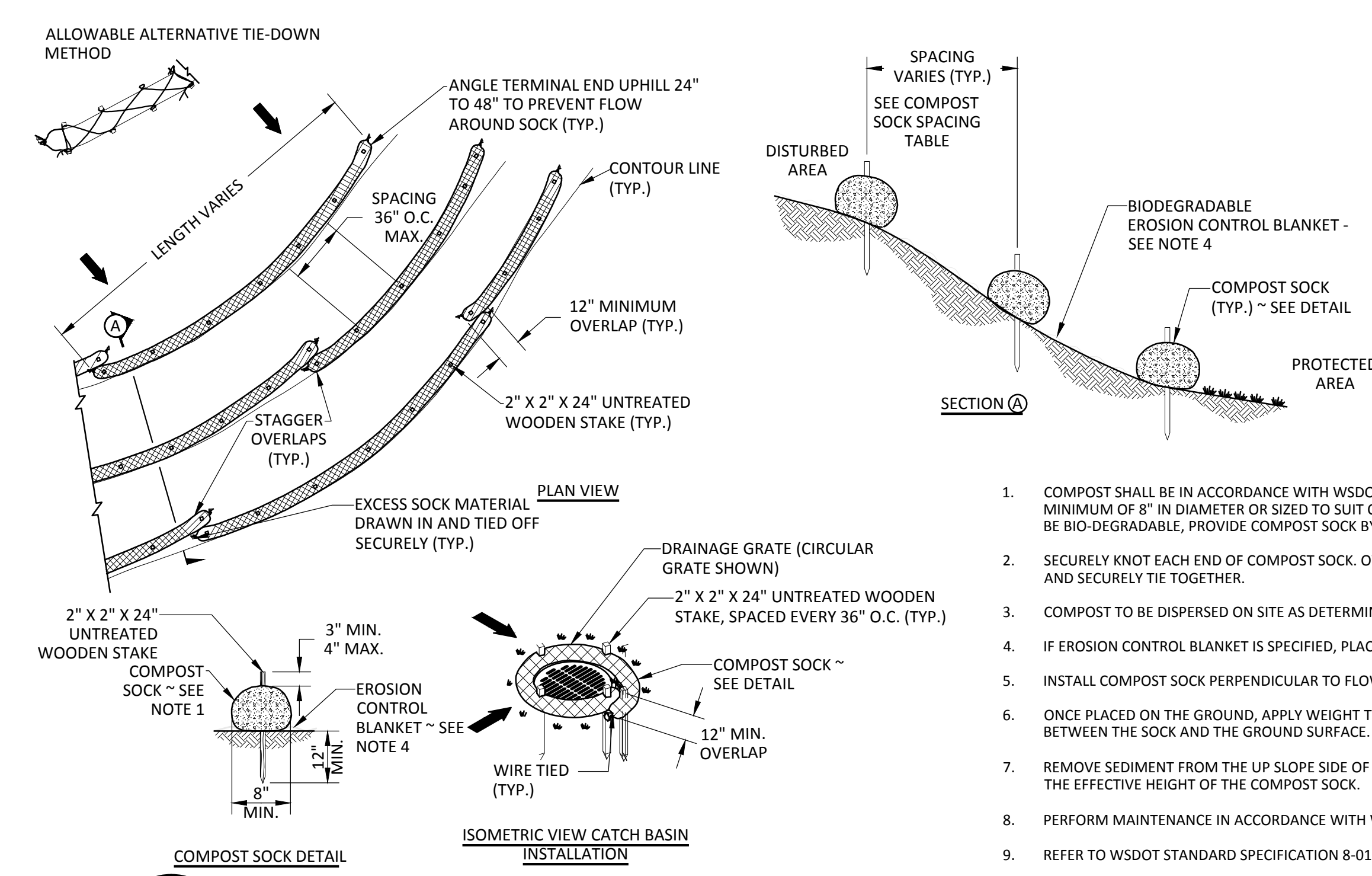


**1 STABILIZED CONSTRUCTION ENTRANCE**  
F020 NOT TO SCALE

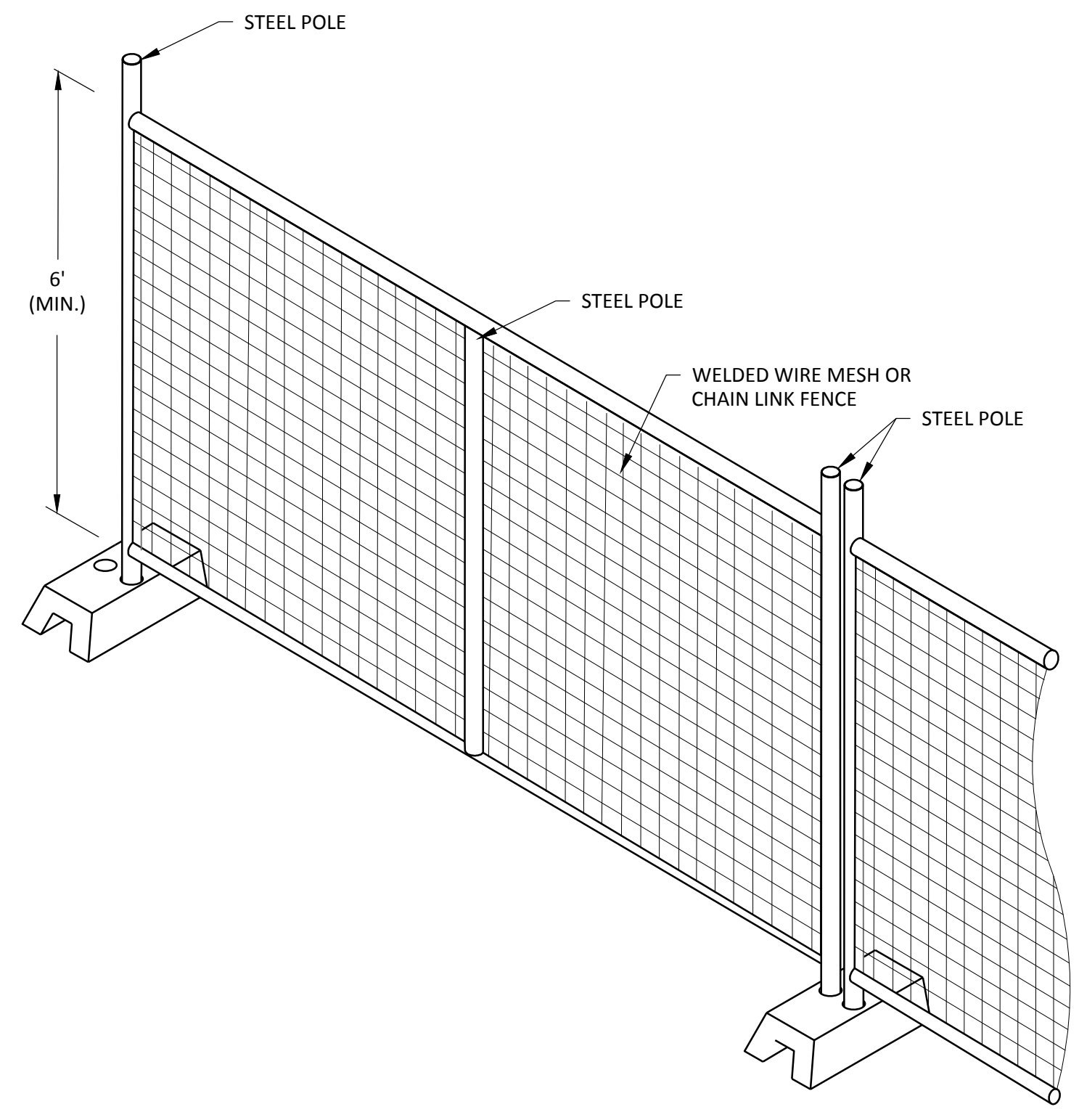


PROVIDE "ULTRA-DRAIN GUARD INLET FILTER" OR APPROVED EQUAL MANUFACTURER'S NAME: ACF ENVIRONMENTAL

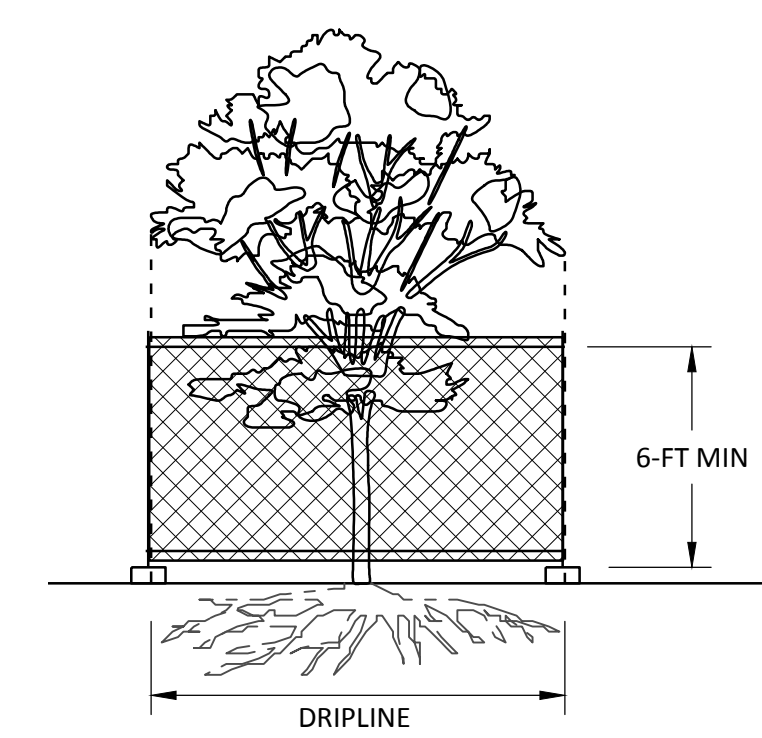
**2 TEMPORARY CATCH BASIN PROTECTION**  
F020 NOT TO SCALE



**3 COMPOST FILTER SOCK**  
F020 NOT TO SCALE



**4 TEMPORARY CONSTRUCTION FENCE**  
F020 NOT TO SCALE



**5 TREE PROTECTION**  
F020 NOT TO SCALE

- NOTES:
- 6-FT. HIGH TEMPORARY CHAIN LINK FENCE SHALL BE PLACED AT THE DRIPLINE OF THE TREE TO BE SAVED. FENCE SHALL COMPLETELY ENCIRCLE THE TREE(S). INSTALL FENCE POSTS USING PIER BLOCKS ONLY. AVOID DRIVING POSTS OR STAKES INTO MAJOR ROOTS.
  - FOR ROOTS OVER 1-IN DIA. THAT ARE DAMAGED DURING CONSTRUCTION, MAKE A CLEAN, STRAIGHT CUT TO REMOVE THE DAMAGED PORTION. ALL EXPOSED ROOTS SHALL BE TEMPORARILY COVERED WITH DAMP BURLAP TO PREVENT DRYING, AND SHALL BE COVERED WITH SOIL AS SOON AS POSSIBLE.
  - WORK WITHIN PROTECTION FENCE SHALL BE DONE MANUALLY. NO STOCKPILING OF MATERIALS, VEHICULAR TRAFFIC, OR STORAGE OF EQUIPMENT OR MACHINERY SHALL BE ALLOWED WITHIN THE LIMIT OF THE FENCING.

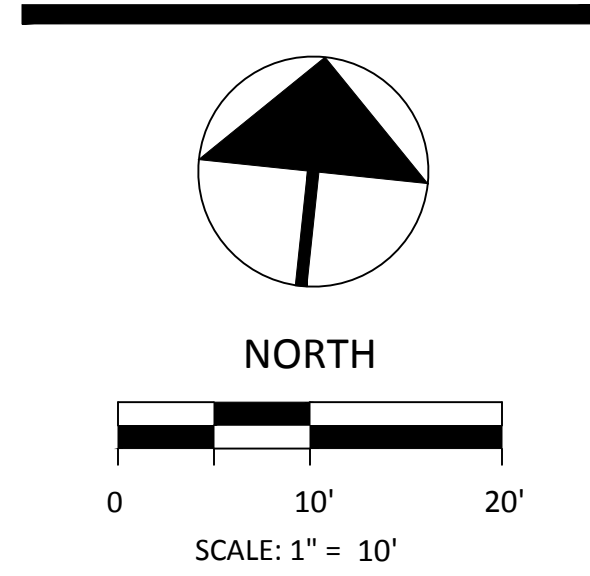
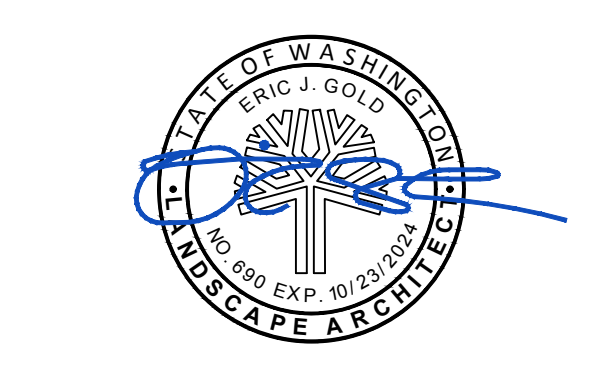
**T.E.S.C. NOTES**

- THE IMPLEMENTATION OF THESE TEMPORARY EROSION AND SEDIMENT CONTROL (TESC) PLANS AND THE CONSTRUCTION, MAINTENANCE, REPLACEMENT, AND UPGRADING OF THESE TESC FACILITIES IS THE RESPONSIBILITY OF THE CONTRACTOR UNTIL ALL CONSTRUCTION IS COMPLETED AND APPROVED AND VEGETATION/LANDSCAPING IS ESTABLISHED.
- THE BOUNDARIES OF THE CLEARING LIMITS SHOWN ON THIS PLAN SHALL BE CLEARLY FLAGGED IN THE FIELD PRIOR TO CONSTRUCTION.
- THE BOUNDARIES OF THE CLEARING LIMITS SHOWN ON THIS PLAN SHALL BE CLEARLY FLAGGED BY A CONTINUOUS LENGTH OF SURVEY TAPE (OR FENCING, IF REQUIRED) PRIOR TO CONSTRUCTION. DURING THE CONSTRUCTION PERIOD, NO DISTURBANCE BEYOND THE CLEARING LIMITS SHALL BE PERMITTED. THE CLEARING LIMITS SHALL BE MAINTAINED BY THE ESC SUPERVISOR FOR THE DURATION OF CONSTRUCTION.
- THE TESC FACILITIES SHOWN ON THIS PLAN MUST BE CONSTRUCTED IN CONJUNCTION WITH ALL CLEARING AND GRADING ACTIVITIES, AND IN SUCH A MANNER AS TO ENSURE THAT SEDIMENT AND SEDIMENT LADEN WATER DO NOT ENTER THE DRAINAGE SYSTEM, ROADWAYS, OR VIOLATE APPLICABLE WATER STANDARDS.
- THE TESC FACILITIES SHOWN ON THIS PLAN ARE THE MINIMUM REQUIREMENTS FOR ANTICIPATED SITE CONDITIONS. DURING THE CONSTRUCTION PERIOD, THESE TESC FACILITIES SHALL BE UPGRADED AS NEEDED FOR UNEXPECTED STORM EVENTS AND MODIFIED TO ACCOUNT FOR CHANGING SITE CONDITIONS (E.G., ADDITIONAL SUMP PUMPS, RELOCATION OF DITCHES AND SILT FENCES, ETC.) TO ENSURE THAT SEDIMENT AND SEDIMENT-LADEN WATER DO NOT LEAVE THE SITE.
- THE TESC FACILITIES SHALL BE INSPECTED DAILY BY THE CONTRACTOR AND MAINTAINED AS NECESSARY TO ENSURE THEIR CONTINUED FUNCTIONING. WRITTEN RECORDS SHALL BE KEPT OF WEEKLY REVIEWS OF THE TESC FACILITIES DURING THE WET SEASON (OCTOBER 1 TO APRIL 30) AND OF MONTHLY REVIEW DURING THE DRY SEASON (MAY 1 TO SEPTEMBER 30).
- ANY AREAS OF EXPOSED SOILS, INCLUDING ROADWAY EMBANKMENTS, THAT WILL NOT BE DISTURBED FOR TWO DAYS DURING THE WET SEASON OR SEVEN DAYS DURING THE DRY SEASON SHALL BE IMMEDIATELY STABILIZED WITH THE APPROVED ESC METHODS (E.G., SEEDING, MULCHING, PLASTIC COVERING, ETC.).
- ANY AREA NEEDING TESC MEASURES THAT DO NOT REQUIRE IMMEDIATE ATTENTION SHALL BE ADDRESSED WITHIN FIFTEEN (15) DAYS.
- THE TESC FACILITIES ON INACTIVE SITES SHALL BE INSPECTED AND MAINTAINED A MINIMUM OF ONCE A MONTH OR WITHIN THE 48 HOURS FOLLOWING A MAJOR STORM EVENT.
- AT NO TIME SHALL MORE THAN ONE FOOT OF SEDIMENT BE ALLOWED TO ACCUMULATE WITHIN A TRAPPED CATCH BASIN. ALL CATCH BASINS AND CONVEYANCE LINES SHALL BE CLEANED PRIOR TO PAVING. THE CLEANING OPERATION SHALL NOT FLUSH SEDIMENT LADEN WATER INTO THE DOWNSTREAM SYSTEM.
- STABILIZED CONSTRUCTION ENTRANCES SHALL BE INSTALLED AT THE BEGINNING OF CONSTRUCTION AND MAINTAINED FOR THE DURATION OF THE PROJECT. ADDITIONAL MEASURES MAY BE REQUIRED TO ENSURE THAT ALL PAVED AREAS ARE KEPT CLEAN FOR THE DURATION OF THE PROJECT.
- WHERE STRAW MULCH FOR TEMPORARY EROSION CONTROL IS REQUIRED, IT SHALL BE APPLIED AT A MINIMUM THICKNESS OF 2 TO 3 INCHES.
- PRIOR TO THE BEGINNING OF THE WET SEASON (OCTOBER 1), ALL DISTURBED AREAS SHALL BE REVIEWED TO IDENTIFY WHICH ONES CAN BE SEEDED IN PREPARATION FOR THE WINTER RAINS. DISTURBED AREAS SHALL BE SEEDED WITHIN ONE WEEK OF THE BEGINNING OF THE WET SEASON. A SKETCH MAP OF THOSE AREAS TO BE SEEDED AND THOSE AREAS TO REMAIN UNCOVERED SHALL BE SUBMITTED TO THE CITY INSPECTOR. THE CITY INSPECTOR CAN REQUIRE SEEDING OF ADDITIONAL AREAS IN ORDER TO PROTECT SURFACE WATERS, ADJACENT PROPERTIES, OR DRAINAGE FACILITIES.

REVISION	DATE



# LUTHER BURBANK PARK PICKLEBALL COURTS



PERMIT / PRICING SET	
DATE	3-8-24
SCALE	1"=10'
DRAWN	CPW
CHECKED	EJG
COPYRIGHT © 2024 D.A. HOGAN & ASSOCIATES	

## COLOR LAYOUT PLAN

SHEET  
**F100**



### LAYOUT LEGEND

- DARK BLUE ACRYLIC SURFACING AND 1.5" ASPHALT PAVING LIFT OVER THE EXISTING ASPHALT PAVING
- LIGHT BLUE ACRYLIC SURFACING AND 1.5" ASPHALT PAVING LIFT OVER THE EXISTING ASPHALT PAVING
- GRAY ACRYLIC SURFACING AND 1.5" ASPHALT PAVING LIFT OVER THE EXISTING ASPHALT PAVING
- CONCRETE PAVING
- SITE RESTORATION
- TRENCH DRAIN
- TRENCH DRAIN CATCH BASIN
- 4 FT. CHAIN LINK FENCE (BLACK VINYL CLAD)
- LIGHT POLE (ALTERNATE BID #1; SEE ELECTRICAL DRAWINGS)

File: F-01 Luther Burbank Tennis COURT 24036.dwg Plotted by: CorneliaW Date: 04-Mar-24 2:44:09pm

### ACRYLIC SURFACING NOTES

- A. PRIOR TO APPLICATION OF THE ACRYLIC SURFACING SYSTEM, THE COURT ASPHALT PAVING SHALL BE FLOOD TESTED AND ANY DEVIATIONS OR AREAS OF STANDING WATER SHALL BE DOCUMENTED FOR CORRECTION.
- B. FILLER COAT: THE CONTRACTOR SHALL APPLY A FILLER COAT OVER THE ENTIRE COURT AREA. THE MATERIAL MUST BE DELIVERED TO THE JOB SITE IN UNOPENED CONTAINERS AND MIXED AT THE JOB SITE ACCORDING TO THE MANUFACTURER'S SPECIFICATIONS. THE FILLER COAT MATERIAL SHALL BE ACRYLIC RE-SURFACER MANUFACTURED BY THE MANUFACTURER OF THE ACRYLIC SURFACING MATERIAL.
- C. COLOR COATS: THE CONTRACTOR SHALL APPLY A MINIMUM OF TWO COLOR COATS OVER THE ENTIRE COURT SURFACE AREA. THE MATERIAL MUST BE DELIVERED TO THE JOBSITE IN UNOPENED CONTAINERS AND MIXED AT THE JOBSITE ACCORDING TO THE MANUFACTURER'S SPECIFICATIONS. AFTER THE FIRST COAT HAS DRIED, THE SURFACE SHALL BE INSPECTED AND ALL RIDGES REMOVED. THE ENTIRE SURFACE SHALL THEN BE BLOWN CLEAN. THE SECOND COAT SHALL BE APPLIED, THE SURFACE SHALL BE INSPECTED AND THE RIDGES SHALL BE REMOVED. THE ENTIRE SURFACE SHALL THEN BE BLOWN CLEAN. BOTH COATS SHALL CONTAIN SAND AS REQUIRED TO OBTAIN THE DESIRED PLAYING "SPEED" AS APPROVED BY THE OWNER.
- D. FINISH COAT: IMMEDIATELY PRIOR TO APPLYING THE FINISH COAT, THE TOTAL SURFACE SHALL BE CLEANED AND FOREIGN MATERIALS BLOWN OFF. THE CONTRACTOR SHALL APPLY ONE FINISH COAT OVER THE ENTIRE SURFACE AREA. THE MATERIAL MUST BE DELIVERED TO THE JOBSITE IN UNOPENED CONTAINERS AND MIXED AT THE JOBSITE ACCORDING TO THE MANUFACTURER'S SPECIFICATIONS.
- E. THE INSTALLATION AND APPLICATION OF SURFACING MATERIALS SHALL BE UNDER THE DIRECT SUPERVISION OF AN INSTALLER WHO IS CERTIFIED BY THE MANUFACTURER OF THE PICKLEBALL COURT SURFACING SYSTEM.
- F. CONTRACTOR MUST PROTECT ALL ADJACENT AREAS FROM ANY CONTAMINATION FROM THE SURFACING SYSTEM INSTALLATION PROCEDURES.
- G. FURNISH AND INSTALL COMPLETE PICKLEBALL COURT LINES AND MARKINGS. ALL LINES SHALL BE DOUBLE-COATED WITH A TEXTURED LINE PAINT PROVIDED BY THE MANUFACTURER OF THE ACRYLIC SURFACING SYSTEM. THE TEXTURE OF THE LINE PAINT SHALL MATCH THE ADJACENT COURT SURFACING TEXTURE. WHEN THE LINE PAINT HAS THOROUGHLY DRIED, THE TAPE SHALL IMMEDIATELY BE REMOVED IN A METHOD TO PROVIDE STRAIGHT AND TRUE LINES. THE CONTRACTOR WILL BE REQUIRED TO PROVIDE TOUCH-UP OF ANY LINE WHERE ERROR IS PRESENT OR COURT SURFACE THAT IS OVER-COATED OR DAMAGED. NO TAPE RESIDUE WILL BE PERMITTED TO REMAIN.

### NOTE LEGEND

- 1 (INDICATES GENERAL CONSTRUCTION NOTE)
- 2 (INDICATES SPECIFIC CONSTRUCTION KEYNOTE)

### LAYOUT NOTES

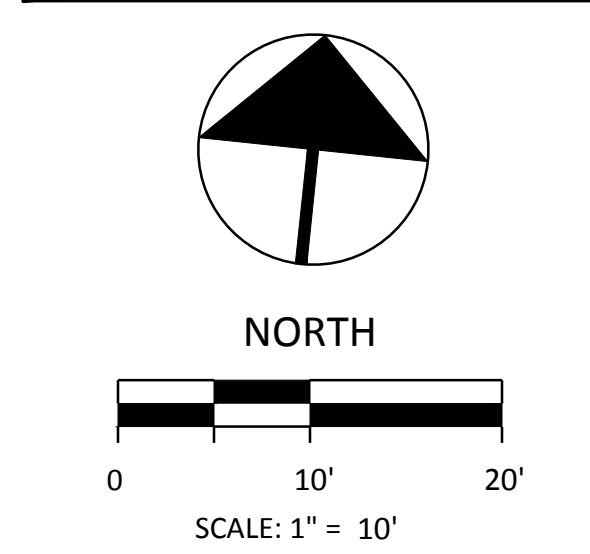
1. LAYOUT OF PICKLEBALL NET POST AND CENTER TIE-DOWN ANCHORS SHALL BE PERFORMED UNDER THE SUPERVISION OF A LICENSED SURVEYOR.
2. PRESSURE WASH AND CLEAN EXISTING ASPHALT PAVING. INSTALL NEW ASPHALT PAVING OVER EXISTING.
3. LINES WILL BE ACCURATELY LAID OUT, TAPED, PRIMED AND PAINTED WITH TWO COATS OF WHITE TEXTURE LINE PAINT. STRIPING SHALL BE 2" WIDTH.
4. IMMEDIATELY PRIOR TO APPLICATION OF ACRYLIC PICKLEBALL SURFACING, PAVING SHALL BE THOROUGHLY CLEANED OF ALL DIRT, DEBRIS OR ANY OTHER SUBSTANCES THAT WILL BE DETRIMENTAL TO THE INSTALLATION. ALL SURFACES TO BE VACUUMED WITH A COMMERCIAL HEAVY DUTY UNIT AND PRESSURE WASHED.
5. RESTORE ALL DISTURBED SURFACES TO EXISTING OR BETTER CONDITION.
6. INSTALL ROOT BARRIER ALONG ENTIRE WEST EDGE OF TENNIS COURTS.
7. SAWCUT EXISTING PAVING AS NEEDED TO INSTALL NEW 4' HT CHAIN LINK FENCE POSTS.
8. SEE ELECTRICAL DRAWINGS FOR LIGHT POLE (ALTERNATE BID #1), CONDUITS AND JUNCTION BOXES.

### LAYOUT LEGEND

- DARK BLUE ACRYLIC SURFACING AND 1.5" ASPHALT PAVING LIFT OVER THE EXISTING ASPHALT PAVING
- LIGHT BLUE ACRYLIC SURFACING AND 1.5" ASPHALT PAVING LIFT OVER THE EXISTING ASPHALT PAVING
- GRAY ACRYLIC SURFACING AND 1.5" ASPHALT PAVING LIFT OVER THE EXISTING ASPHALT PAVING
- GRAY ACRYLIC SURFACING OVER NEW ASPHALT PAVING AND BASE
- GRAY ACRYLIC SURFACING OVER NEW ASPHALT PAVING ON EXISTING BASE
- CONCRETE PAVING
- SITE RESTORATION
- TRENCH DRAIN
- TRENCH DRAIN CATCH BASIN
- 4 FT HT. CHAIN LINK FENCE (BLACK VINYL CLAD)
- LIGHT POLE (ALTERNATE BID #1; SEE ELECTRICAL DRAWINGS)
- ROOT BARRIER

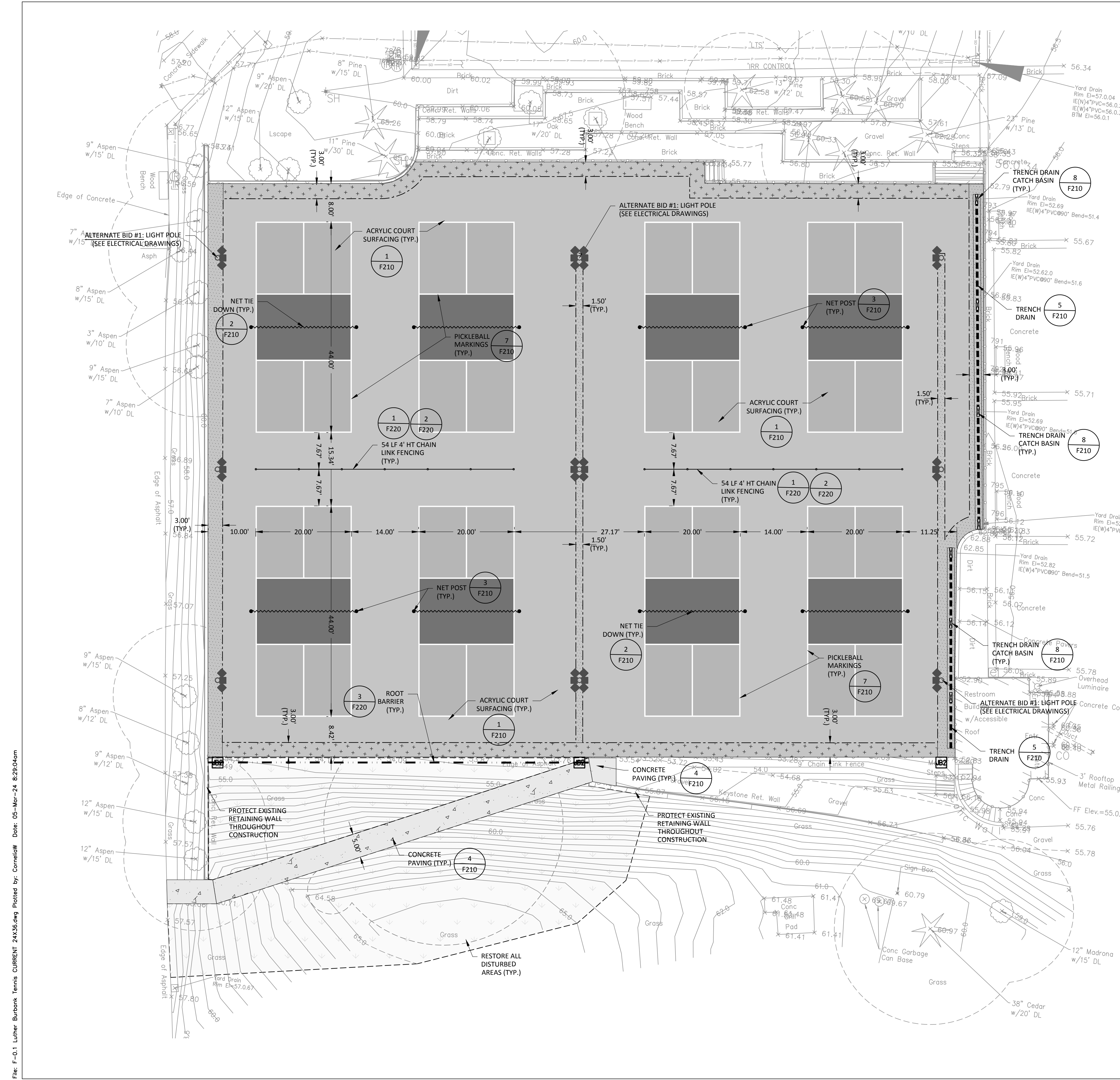


## LUTHER BURBANK PARK PICKLEBALL COURTS



PERMIT / PRICING SET	
DATE	3-8-24
SCALE	1"=10'
DRAWN	CPW
CHECKED	EJG
COPYRIGHT © 2024 D.A. HOGAN & ASSOCIATES	

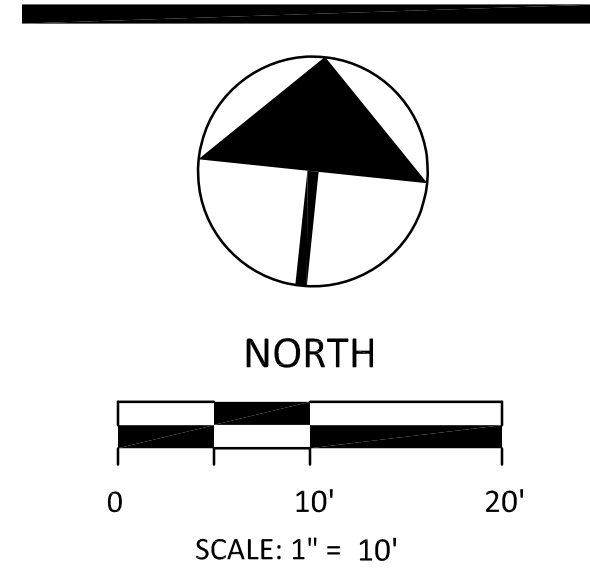
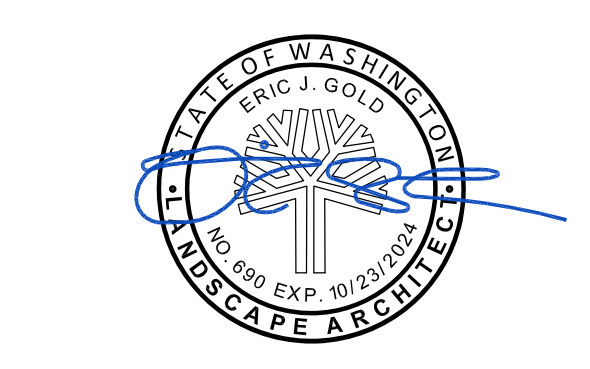
### LAYOUT PLAN



File: F-01 Luther Burbank Tennis CURRENT 24X36.dwg Plotted by: Corneilw Date: 05-Mar-24 8:29:04am



**LUTHER BURBANK PARK PICKLEBALL COURTS**



**PERMIT / PRICING SET**

DATE	3-8-24
SCALE	1"=10'
DRAWN	CPW
CHECKED	EIG
COPYRIGHT © 2024 D.A. HOGAN & ASSOCIATES	

**GRADING & DRAINAGE PLAN**



**GRADING NOTES**

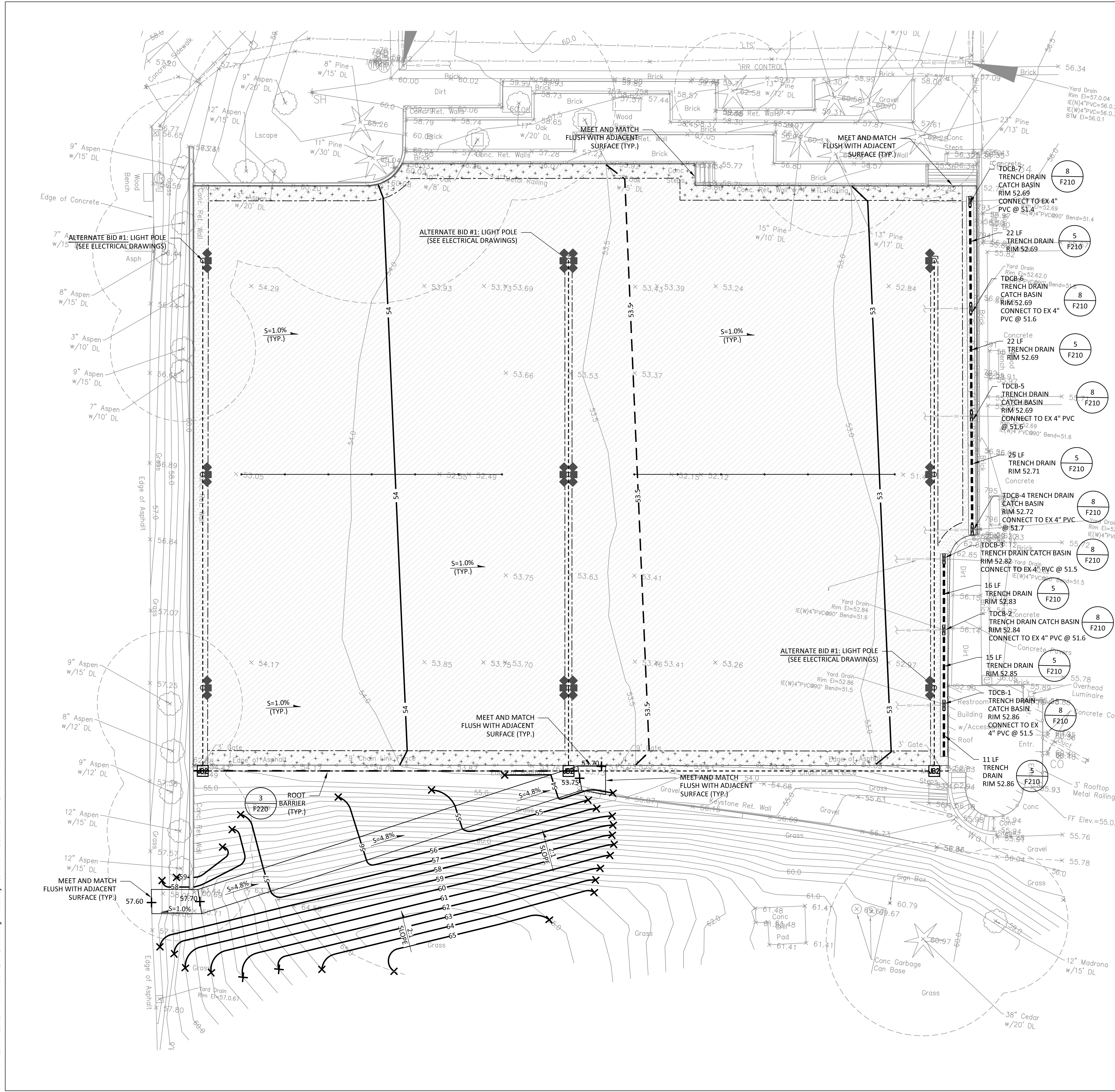
- THE CONTRACTOR SHALL CALL AND NOTIFY DIGALERT AT 8-1-1 A MINIMUM OF 2 WORKING DAYS BEFORE DEMOLITION, DIGGING, OR GRADING OPERATIONS OCCUR.
- NEW CONTOURS SHOWN ARE FINISH GRADE ELEVATIONS.
- BACKFILL AND COMPACT EXCAVATED AREAS RESULTING FROM DEMOLITION ACTIVITIES WITH SELECT FILL TO 95% WITH 12" MAX LIFTS.
- STRIP FIELD AREA OF EXISTING SOD AND ORGANIC MATERIALS AND DISPOSE OF OFF SITE. ALL EXCESS AND UNSUITABLE SOIL MATERIALS SHALL BE REMOVED AND DISPOSED OF OFF SITE.
- THE CONTRACTOR SHALL NOTIFY THE ENGINEER IN THE EVENT OR DISCOVERY OF POOR SOILS, GROUNDWATER OR DISCREPANCIES IN THE EXISTING CONDITIONS AS NOTED ON THE PLANS.
- ALL PERIMETER PAVING SHALL MEET AND MATCH ADJACENT SURFACES.
- PRIOR TO INSTALLATION OF THE TENNIS COURT SURFACING, THE PAVING SHALL BE INSPECTED FOR PLANARITY BY THE ENGINEER, GENERAL CONTRACTOR, AND VENDOR.
- FINISH SURFACE PLANARITY OF ASPHALT COURT PAVING SHALL NOT DEVIATE MORE THAN 1/8" WHEN MEASURED WITH A 10 FOOT STRAIGHT EDGE IN ALL DIRECTIONS.

**NOTE LEGEND**

- (INDICATES GENERAL CONSTRUCTION NOTE)
- (INDICATES SPECIFIC CONSTRUCTION KEYNOTE)

**GRADING LEGEND**

- 60 ——— EXISTING CONTOUR LINES
- 53.75 ——— SPOT ELEVATION
- 57 ——— NEW CONTOUR LINES
- 58.5 - - - NEW HALF CONTOUR LINES
- S=1.0% ——— SURFACE SLOPE
- c ——— CONSTANT SURFACE SLOPE
- X ——— MATCH TO EXISTING
- - - GRADE BREAK
- [Pattern] NEW ASPHALT PAVING AND BASE AGGREGATE AT GRADE TRANSITION AND UTILITY INSTALLATION
- [Pattern] NEW ASPHALT PAVING OVER EXISTING AGGREGATE AT GRADE TRANSITION
- [Pattern] LIMIT OF ACRYLIC SURFACING OVER ASPHALT
- - - TRENCH DRAIN
- [Symbol] TRENCH DRAIN CATCH BASIN
- - - 4 FT HT. CHAIN LINK FENCE (BLACK VINYL CLAD)
- [Symbol] LIGHT POLE (ALTERNATE BID #1; SEE ELECTRICAL DRAWINGS)
- - - ROOT BARRIER



File: F-01 Luther Burbank Tennis COURT 24X36.dwg Plotted by: CorinaW Date: 05-Mar-24 8:31:41am

REVISION	DATE

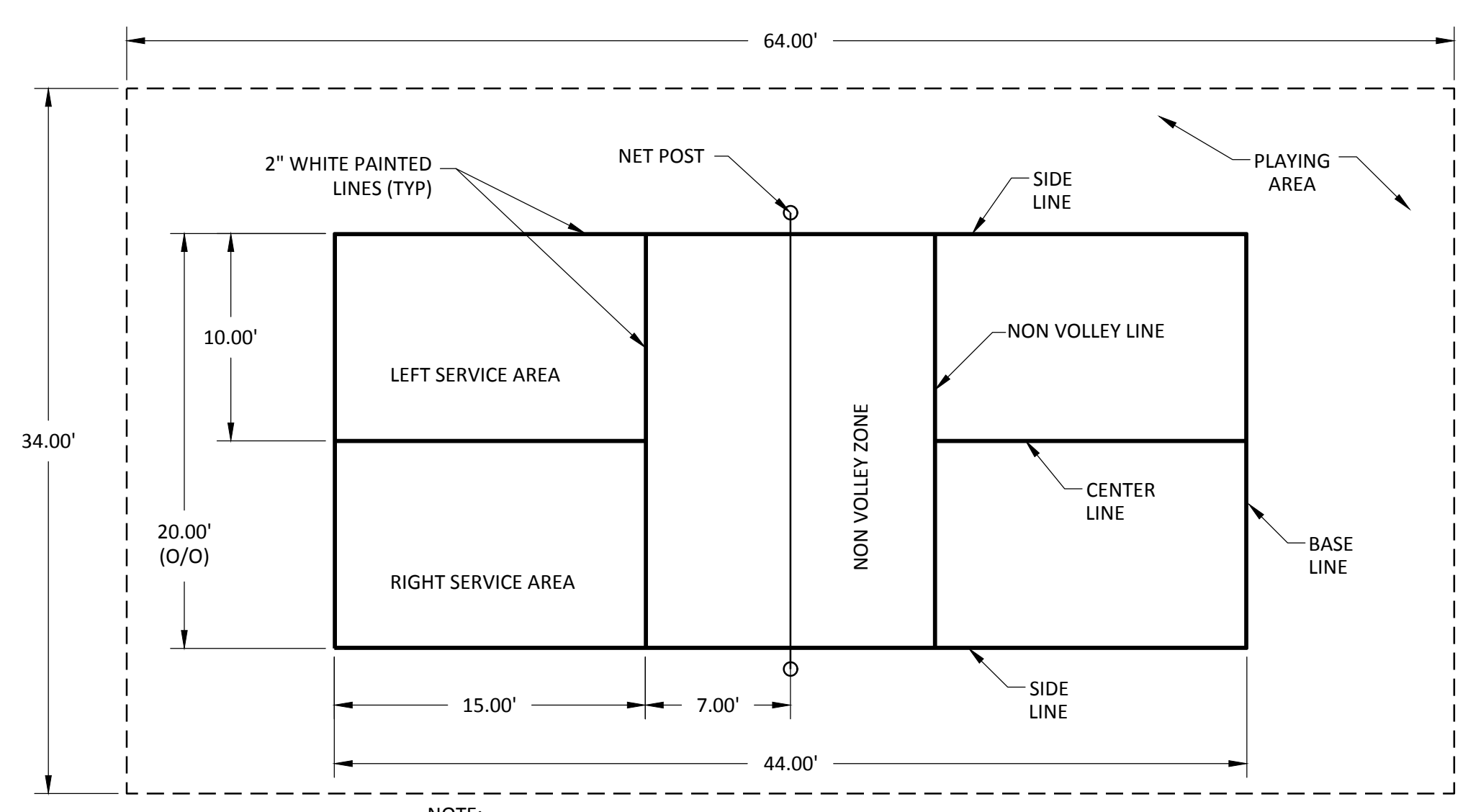


**LUTHER BURBANK PARK PICKLEBALL COURTS**

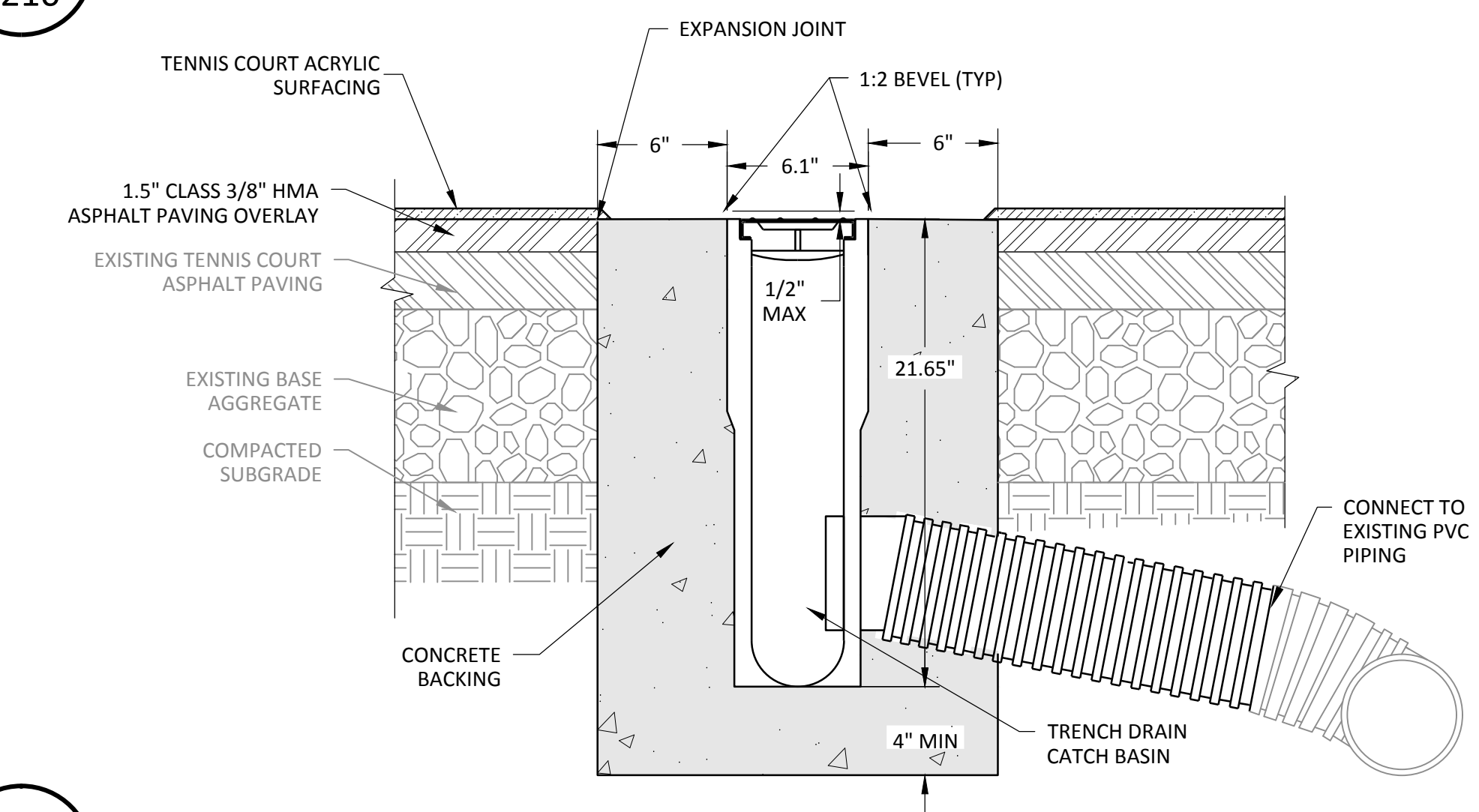


PERMIT / PRICING SET	
DATE	3-8-24
SCALE	NTS
DRAWN	LRB
CHECKED	EJG
COPYRIGHT © 2024 D.A. HOGAN & ASSOCIATES	

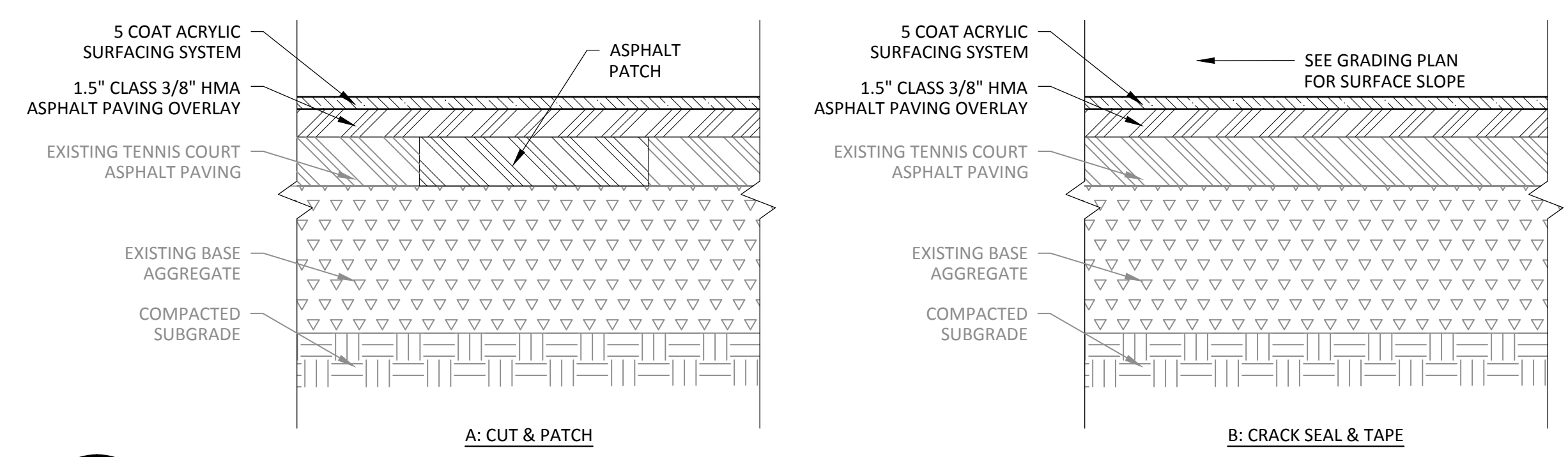
**TYPICAL DETAILS**



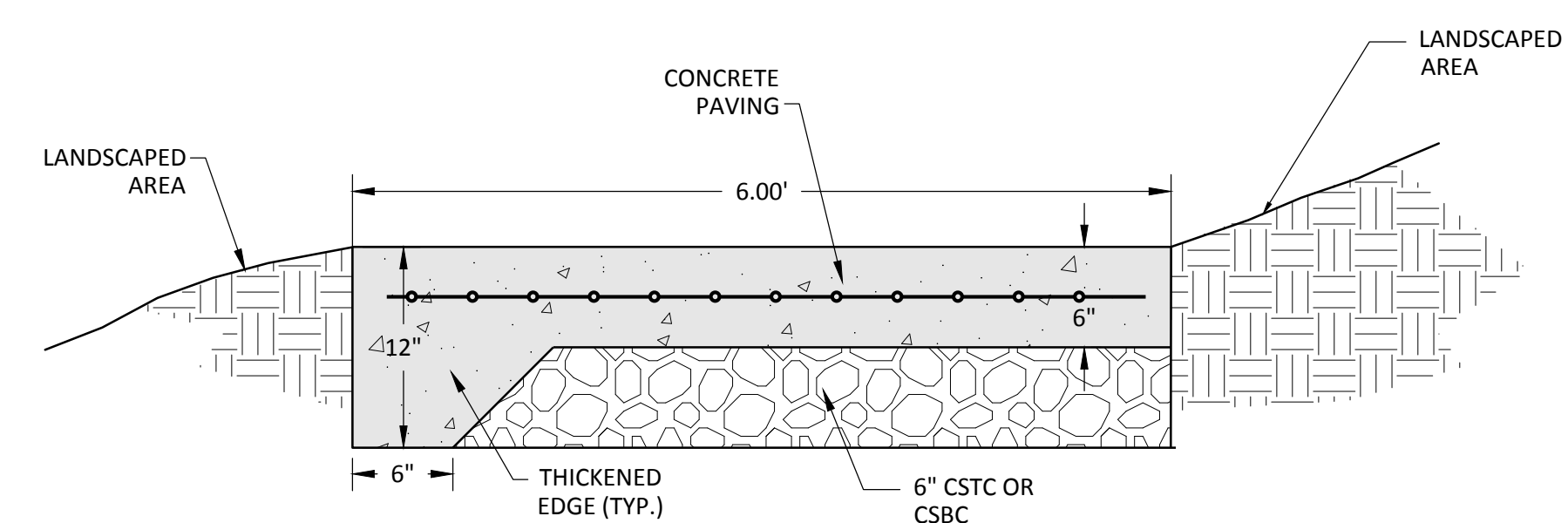
**7 PICKLEBALL COURT MARKINGS**  
F210 NOT TO SCALE



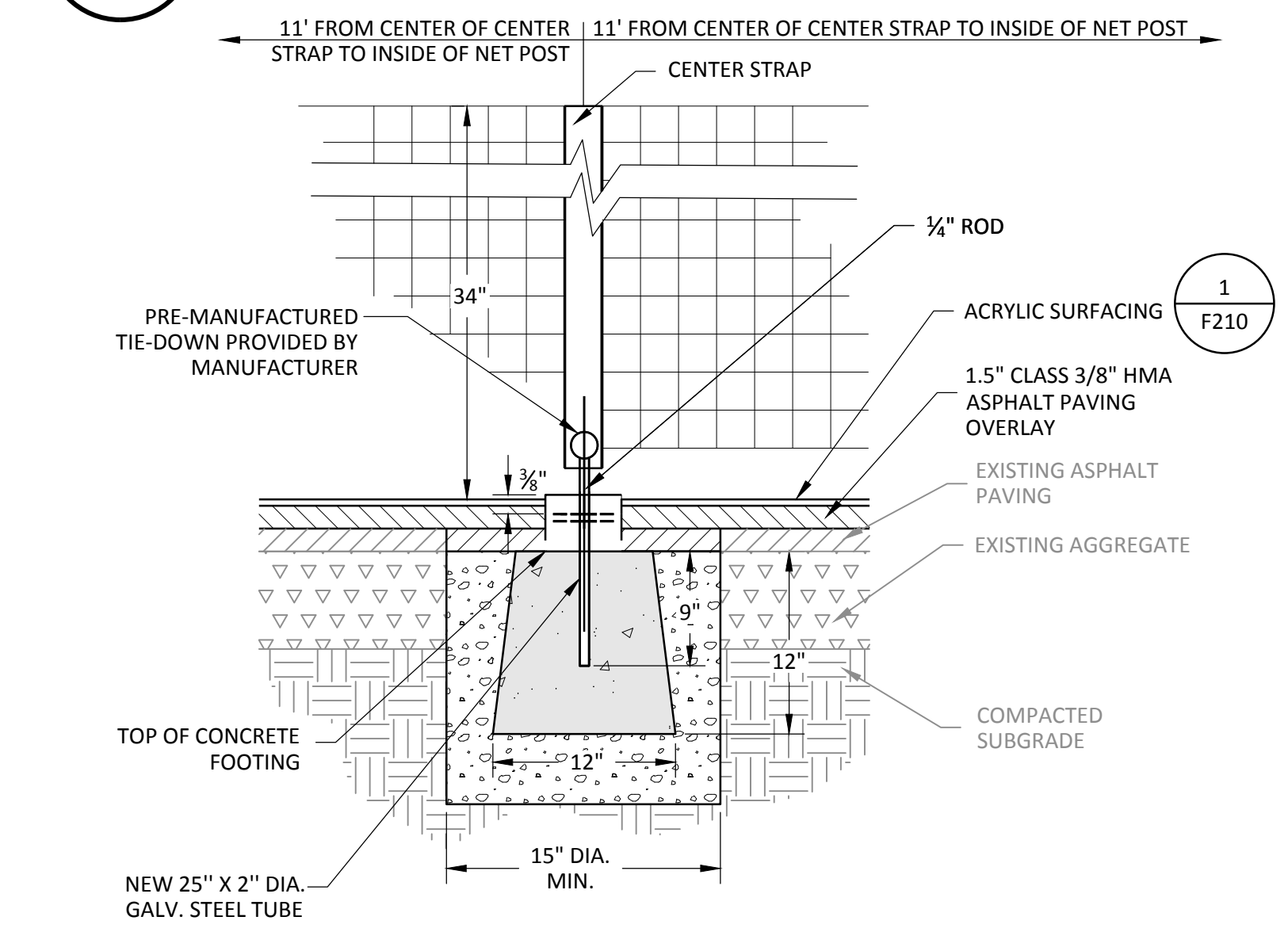
**8 TRENCH DRAIN CATCH BASIN**  
F210 NOT TO SCALE



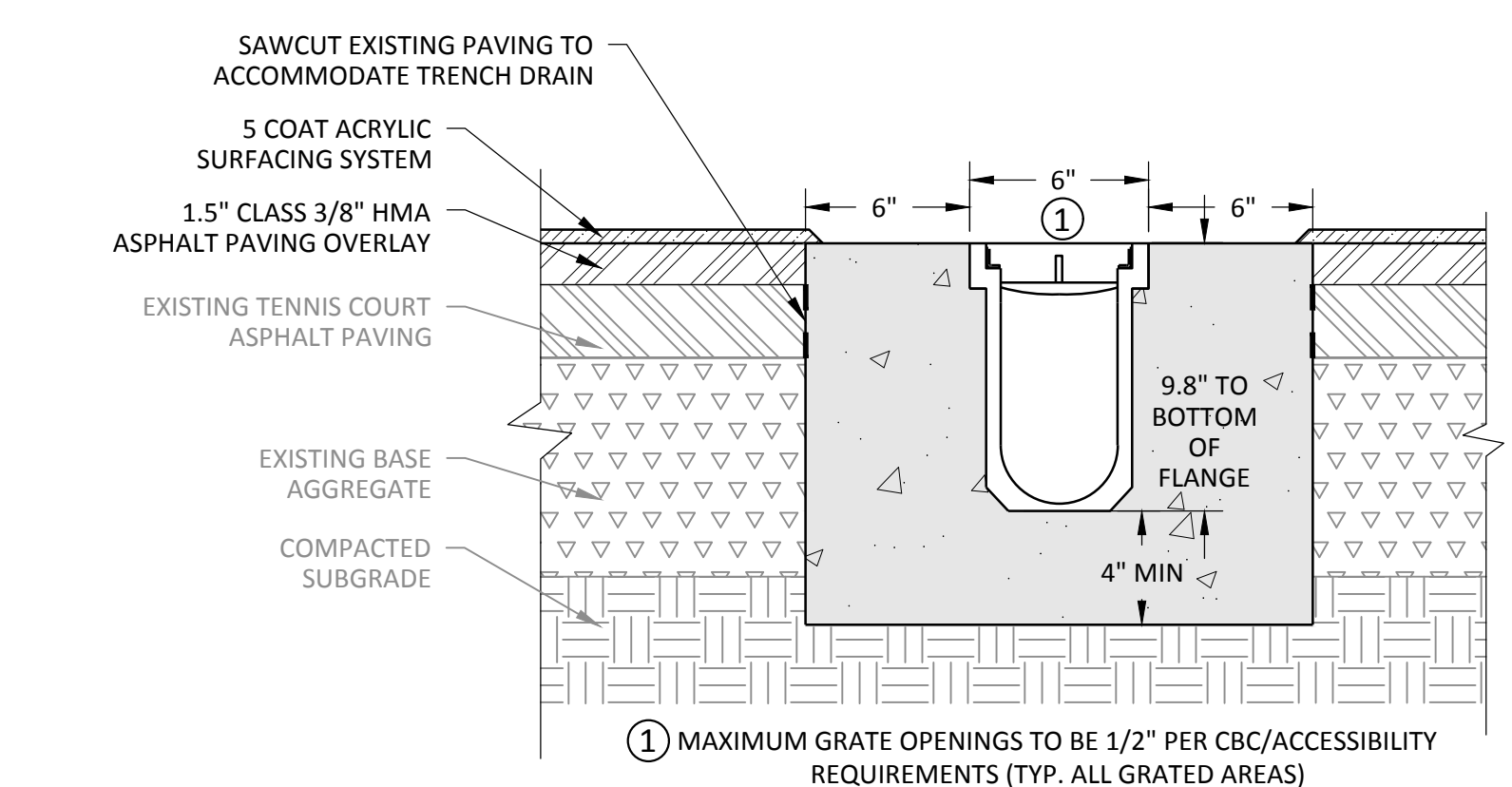
**1 ACRYLIC SURFACING SECTION WITH OVERLAY**  
F210 NOT TO SCALE



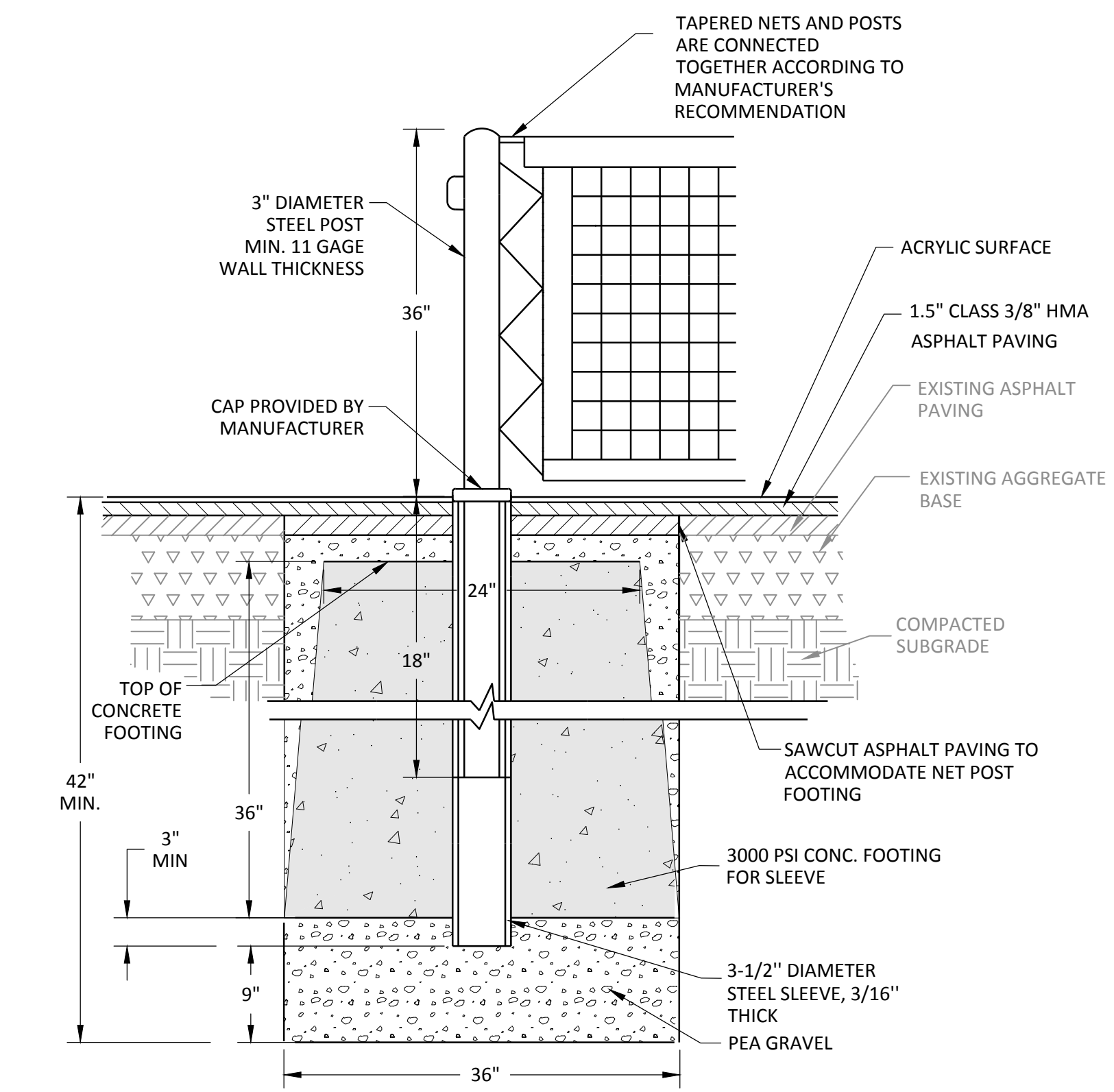
**4 CONCRETE RAMP SECTION**  
F210 NOT TO SCALE



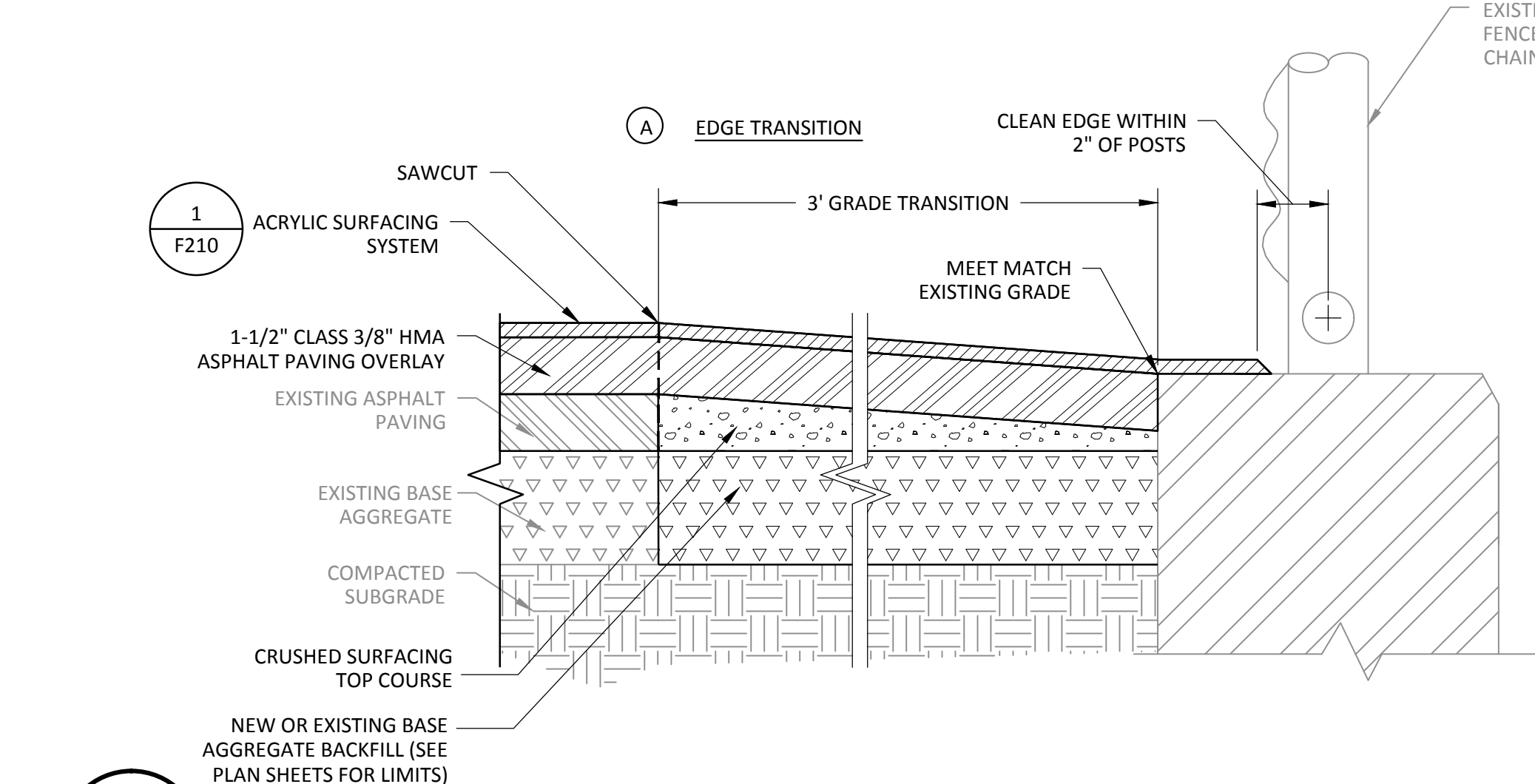
**2 PICKLEBALL NET TIE DOWN**  
F210 NOT TO SCALE



**5 TRENCH DRAIN**  
F210 NOT TO SCALE



**3 PICKLEBALL NET POST**  
F210 NOT TO SCALE



**6 OVERLAY SECTION**  
F210 NOT TO SCALE

File: F210 Typical Detailing.dwg Plotted by: Corneilw Date: 05-Mar-24 8:33:29am

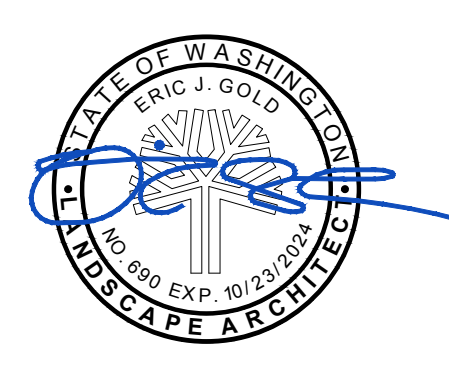
REVISION	DATE



LUTHER BURBANK PARK PICKLEBALL COURTS



1450 114th Ave. SE, Suite 225  
Bellevue, WA 98004  
P: 206-285-0400  
www.dahogan.com

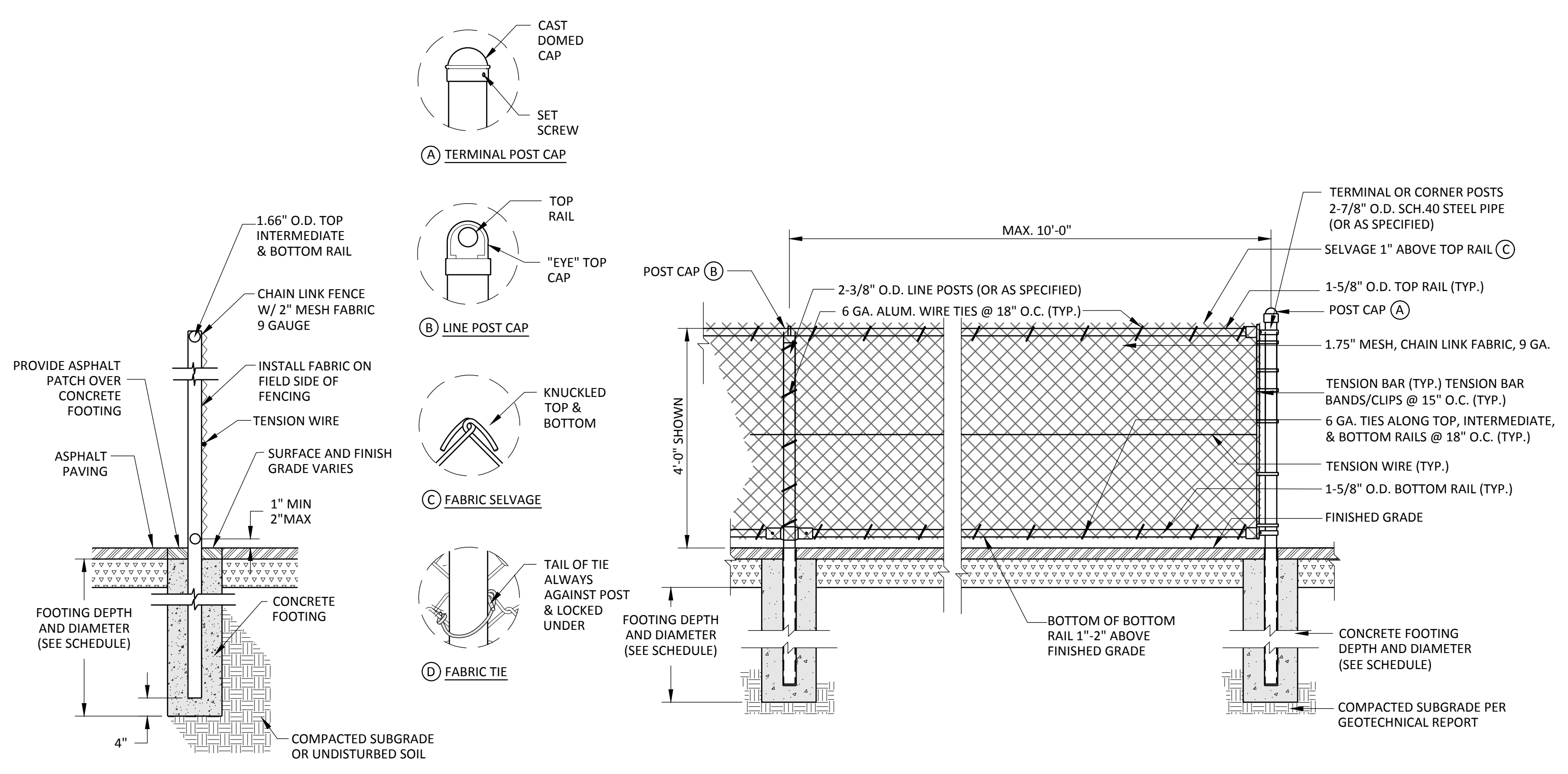


PERMIT / PRICING SET

DATE	3-8-24
SCALE	NTS
DRAWN	LRB
CHECKED	EJG
COPYRIGHT © 2024 D.A. HOGAN & ASSOCIATES	

SITE DETAILS

SHEET  
F220

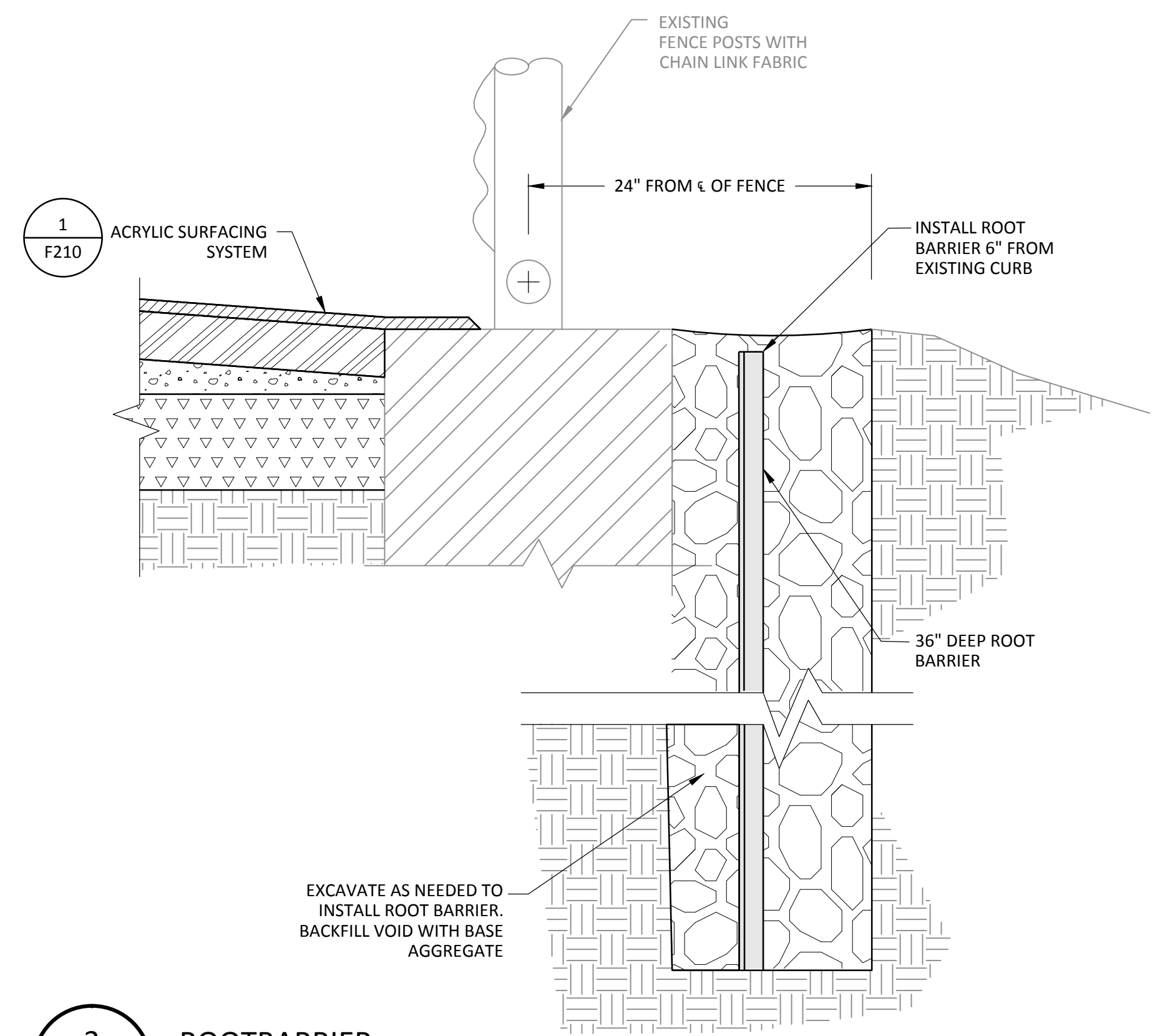


1 CHAIN LINK FENCING ELEVATION & SECTION  
NOT TO SCALE

FENCING TYPE	4' HIGH FENCING
CORNER POST	2.875" OD
TERMINAL POST	2.875" OD
LINE POST	2.375" OD
FOOTING DEPTH	24"
FOOTING DIAMETER	12"
TOP RAIL HT.	4'
INTERMEDIATE RAIL HTS.	---
BOTTOM RAIL HT	1"
TENSION WIRE HTS.	2'

- FENCING NOTES:
- ALL FENCING FABRIC SHALL BE 1.75" MESH NO. 9 GAUGE FINISHED STEEL WIRES WITH BLACK VINYL COATING EXCEPT FOR DESIGNATED SECTIONS OF THE BACKSTOP FENCING WHICH SHALL INCLUDE NO. 6 GAUGE FINISHED STEEL WIRES WITH BLACK VINYL COATING.
  - ALL POSTS, RAILS, BRACES, POST TOPS, STRETCHER BARS, BANDS, ETC. SHALL BE PAINTED BLACK.
  - TENSION WIRES AND WIRE TIES SHALL INCLUDE A BLACK VINYL COATING.
  - MAXIMUM POST SPACING: 10' ON CENTER.
  - ALIGN POSTS SO THAT FENCE FABRIC IS INSTALLED IN A CONTINUOUS, STRAIGHT LINE, REGARDLESS OF FENCE POST DIAMETER
  - ALL POSTS SHALL BE ASTM A53, GRADE B, SCHEDULE 40 UNLESS NOTED OTHERWISE

2 CHAIN LINK SCHEDULE  
NOT TO SCALE

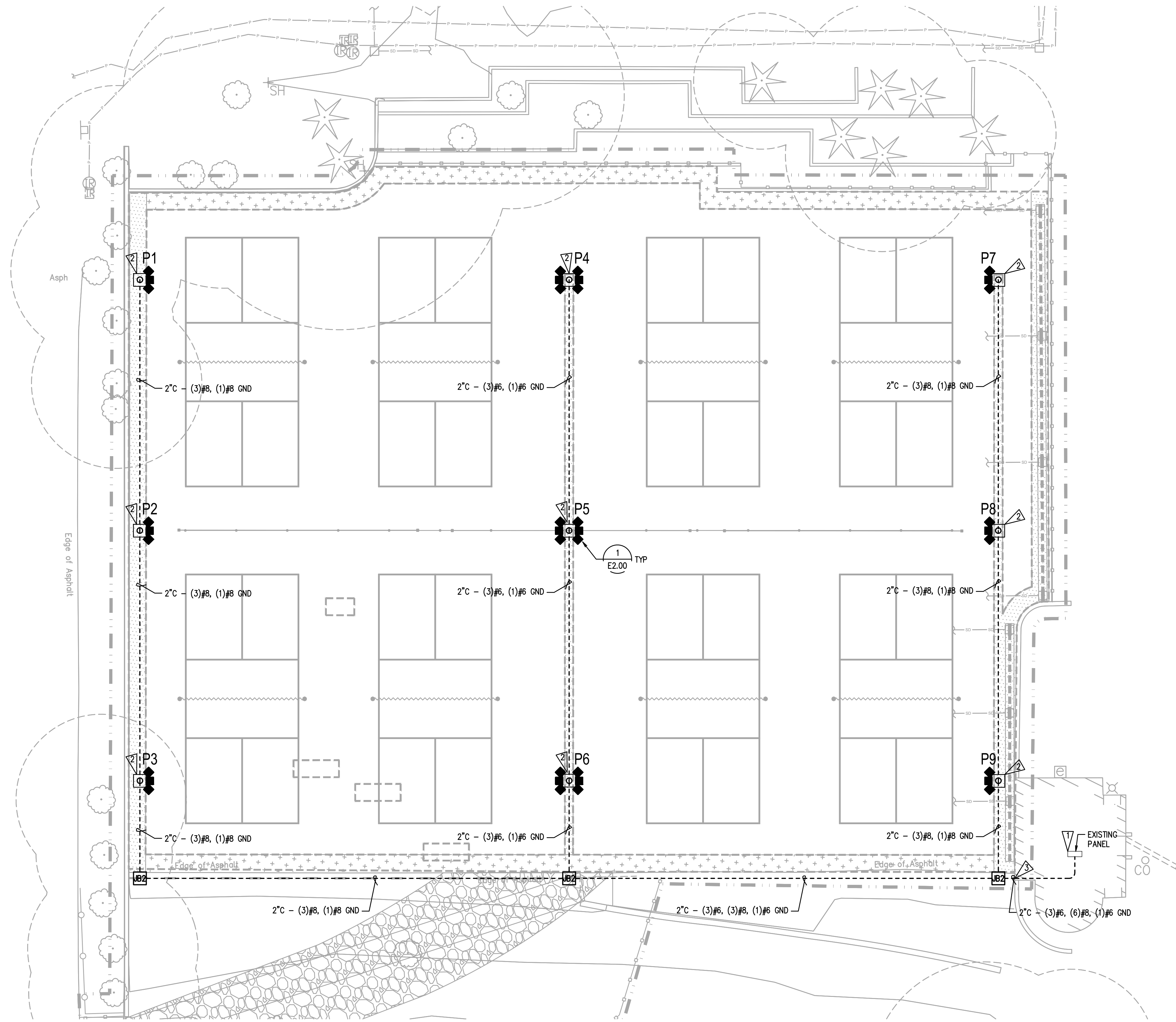


3 ROOTBARRIER  
NOT TO SCALE

File: F220 Site Details.dwg Plotted by: CorinnW Date: 04-Mar-24 9:17:10am



U:\20482543\0\_WORKING\_FILES\0\_ELECTRICAL\01\_CAD\01\_SHEETS\110\_Mar\_05\_2024\_2:27 PM\_By\_WITTMER



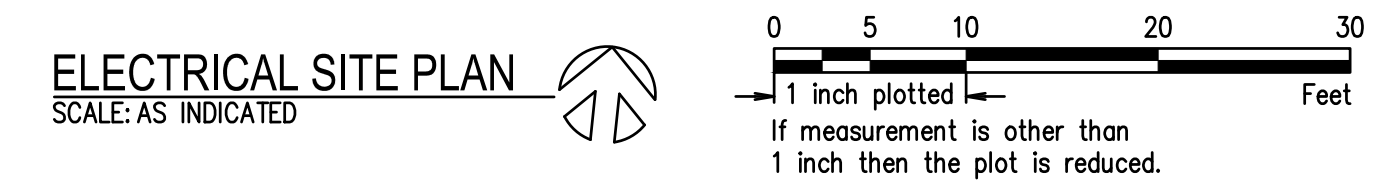
- GENERAL NOTES:**
- JUNCTION BOX LOCATIONS AND CONDUIT ROUTING ARE SCHEMATIC. ALIGN JUNCTION BOXES WITH PAVEMENT EDGES. CONDUIT ROUTING SHALL AVOID TREES. SUBMIT CONDUIT AND JUNCTION BOX LAYOUT PLAN TO ENGINEER PRIOR TO INSTALLATION.
  - MAINTAIN AND PROTECT ALL EXISTING UNDERGROUND UTILITIES. CONTRACTOR TO PROVIDE LOCATE PRIOR TO ANY EXCAVATION. PRIOR TO STARTING CONSTRUCTION, CONTRACTOR SHALL CALL "ONE-CALL" FOR UTILITY LOCATIONS.
  - ALL SPARE/EMPTY CONDUIT TO BE PROVIDED WITH NYLON PULL STRINGS.
  - ALL JUNCTION BOXES AND CONDUITS ARE SHOWN IN APPROXIMATE LOCATIONS. VERIFY LOCATION OF PROPERTY LINE, EASEMENTS AND UTILITIES PRIOR TO PLACEMENT.
  - ALL CONDUITS LENGTHS ARE APPROXIMATE. REFER TO CIVIL FOR EXACT LENGTHS.
  - CAP ALL UNUSED CONDUITS. WHERE CONDUITS ARE CAPPED MARK LOCATION WITH AN ELECTRICAL MARKER.

- FLAG NOTES:**
- CONNECT TO EXISTING ELECTRICAL PANEL LOCATED IN RESTROOM. PROVIDE (2) 30A-3P BREAKERS AND (1) 40A-3P BREAKER. PROVIDE LIGHTING CONTACTORS IN NEMA 1 BOX. PROVIDE TORK K-400 TIMECLOCK.
  - BASE BID - PROVIDE WSDOT TYPE 1 JUNCTION BOX AT LOCATION OF POLE. CONDUIT IS PART OF BASE BID. ALTERNATE BID 1 - PROVIDE POLE FOUNDATION, LIGHTS, BRACKET, AND WRING.
  - CORE DRILL AND SEAL ALL PENETRATIONS.

- LEGEND**
- STRAIGHT STEEL POLE, POWDER COAT FINISH
  - AREA LUMINAIRE, 320 WATT LED, 4000K, 240 VOLT
  - UNDERGROUND RACEWAY
  - LB2 TYPE 2 JUNCTION BOX, WSDOT WITH SLIP NOT BOLT DOWN LID

**POLE AND LUMINAIRE SCHEDULE**

POLE	HEIGHT	AREA LUMINAIRE
P1	30'-0"	3
P2	30'-0"	3
P3	30'-0"	3
P4	30'-0"	6
P5	30'-0"	6
P6	30'-0"	6
P7	30'-0"	3
P8	30'-0"	3
P9	30'-0"	3
TOTAL		36

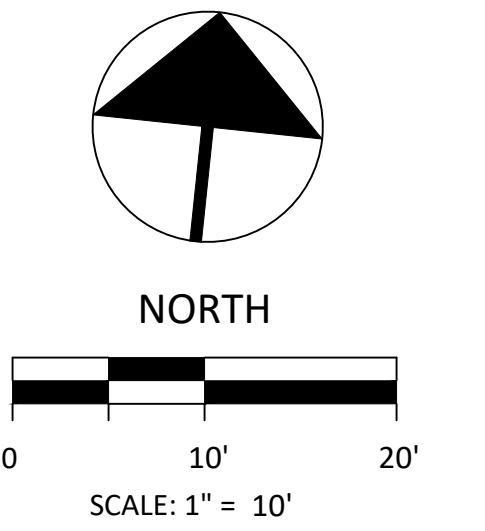


**Stantec**  
3400 188th Street SW Suite 285  
Lynnwood Washington 98037-4772  
(206) 667-0555

REVISION	DATE



**LUTHER BURBANK PARK PICKLEBALL COURTS**



**PERMIT/PRICING SET**

DATE	3-8-24
SCALE	AS NOTED
DRAWN	AAU
CHECKED	CFB
COPYRIGHT © 2024 D.A. HOGAN & ASSOCIATES	

**ELECTRICAL SITE PLAN**

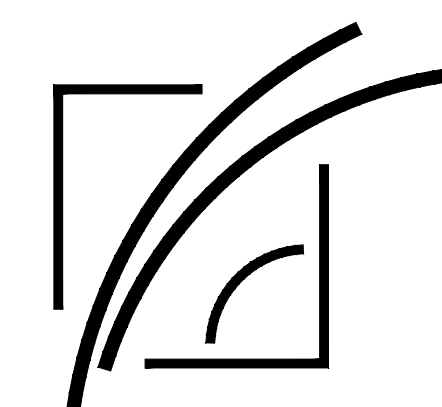
SHEET  
**E110**

**FLAG NOTES:**

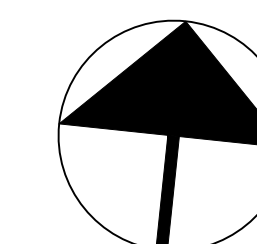
- 1 STRUCTURAL CALCULATIONS FOR GALVANIZED STEEL POLE PROVIDED BY MANUFACTURER.
- 2 MATCH EXISTING GRADE.
- 3 PROVIDE CONDUITS THROUGH ACCESS HOLE AND TURN UP INSIDE FLOODLIGHT POLE. EXTEND CONDUIT TO ADJACENT JUNCTION BOX.
- 4 REFER TO STRUCTURAL DRAWINGS FOR POLE FOUNDATION DETAILS.
- 5 REFER TO FLOODLIGHT POLE SCHEDULE ON E110 FOR FLOODLIGHT QUANTITY.



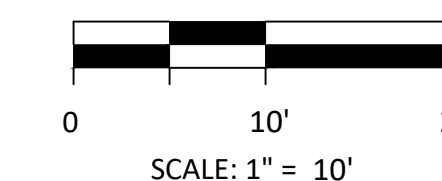
**LUTHER  
BURBANK PARK  
PICKLEBALL  
COURTS**



**DA HOGAN**  
119 1st Avenue South, Suite 110  
Seattle, Washington 98104  
p. 206.285.0400  
www.dahogan.com



**NORTH**



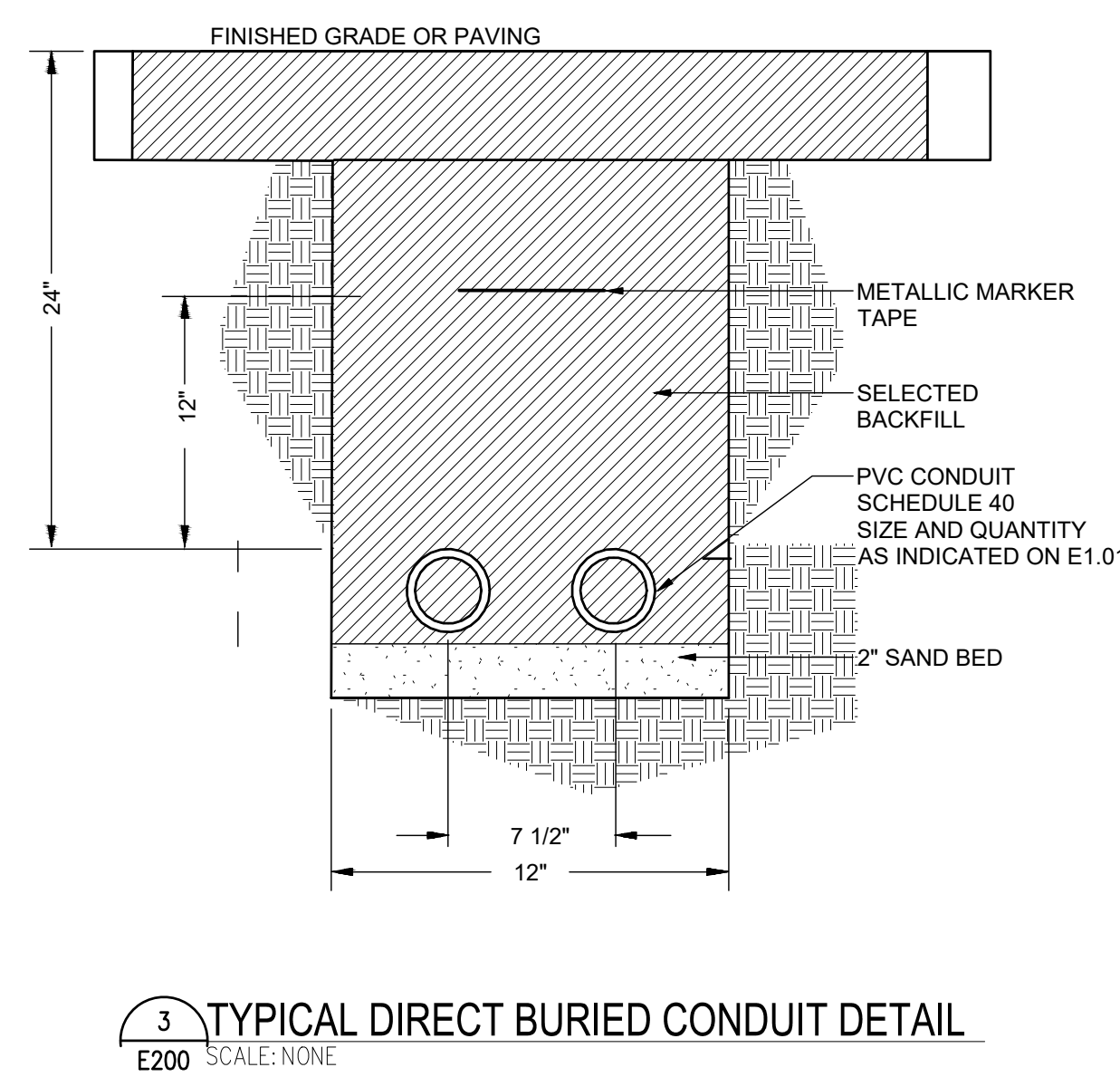
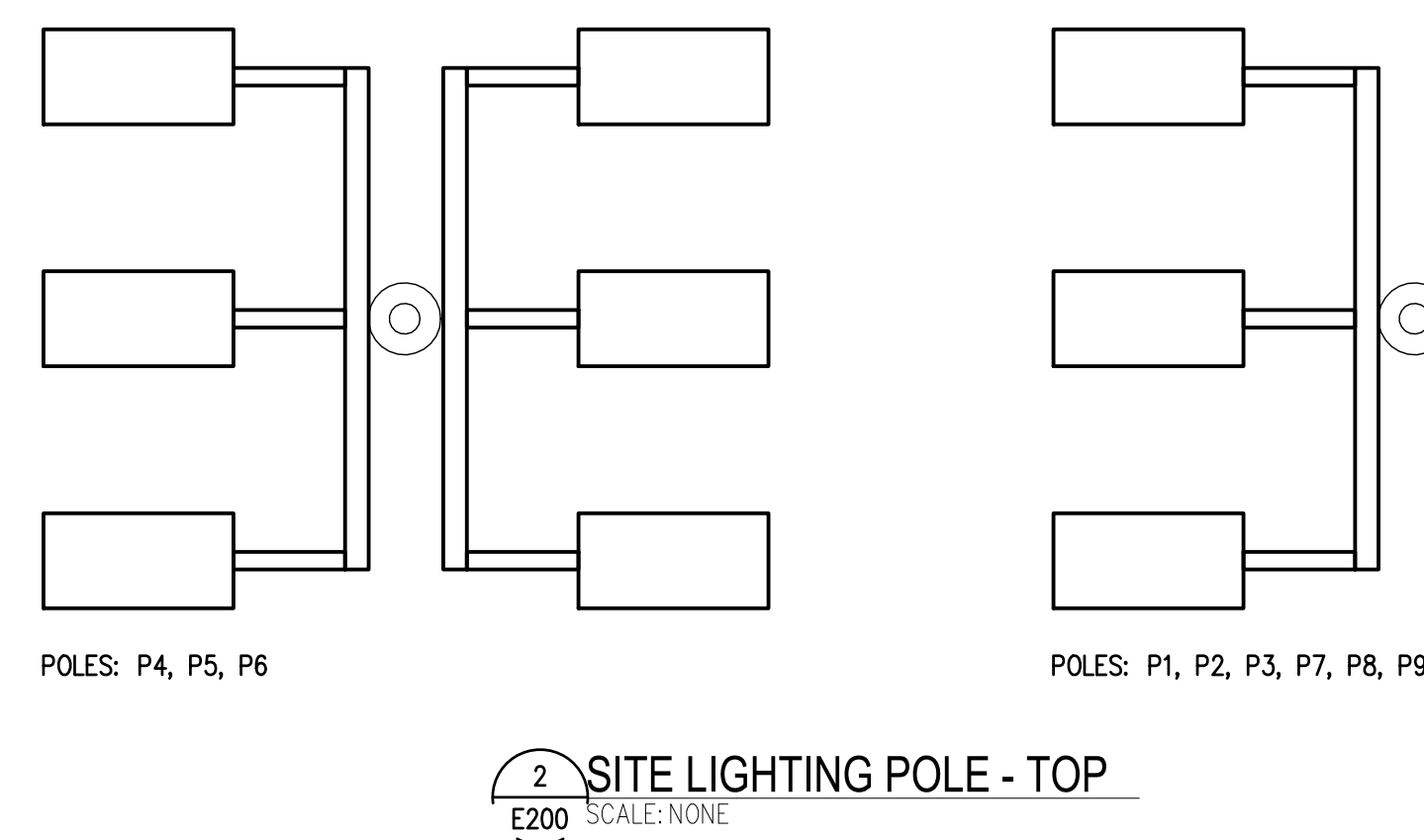
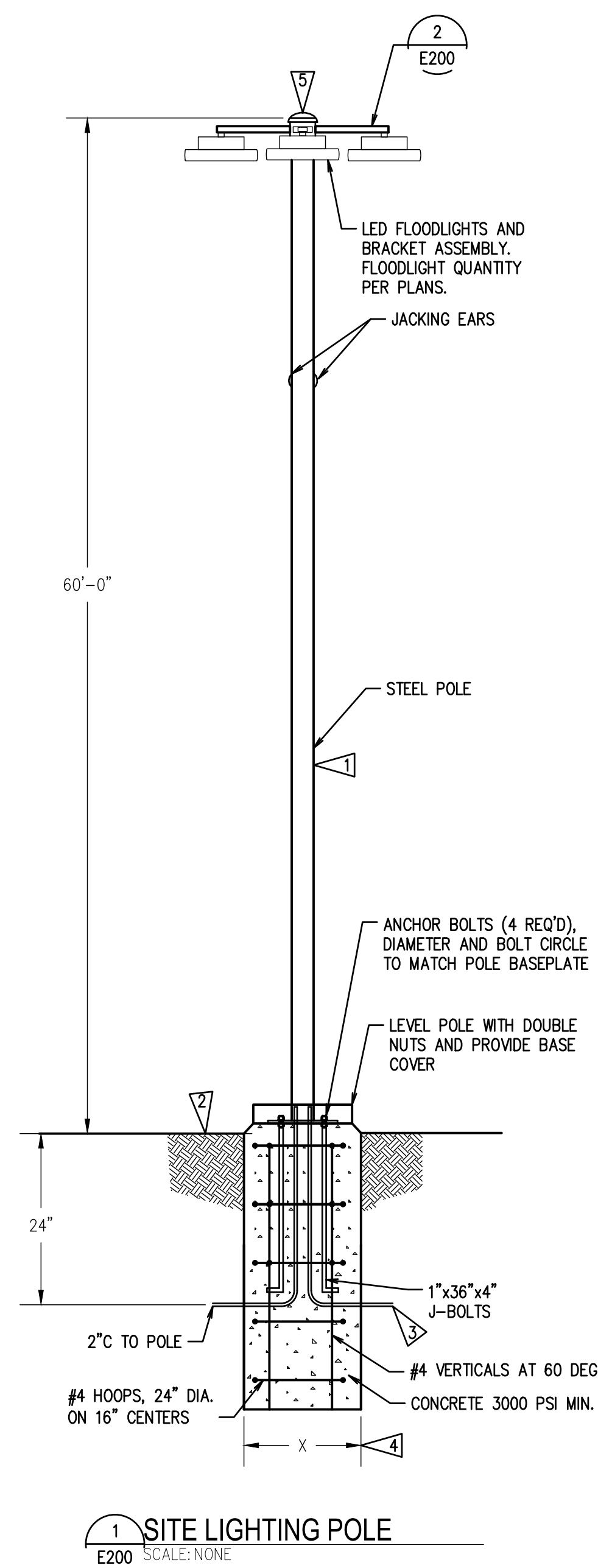
**PERMIT/PRICING SET**

DATE	3-8-24
SCALE	AS NOTED
DRAWN	AAU
CHECKED	CFB
COPYRIGHT © 2024 D.A. HOGAN & ASSOCIATES	

**ELECTRICAL  
DETAILS**

SHEET

**E200**



3400 188th Street SW Suite 285  
Lynnwood Washington 98037-4772  
(206) 667-0555